

Kion Sapountzis
613 9235 1824

Index

Indicative NTA

Premium/Discount	2
Dividends	4
Performance Data	6
Normalisation Effect	8
Options	10

Charts

NTA Performance	12
Premium/Discount	14
Share Price Performance	15

Upcoming Dividends/Distributions

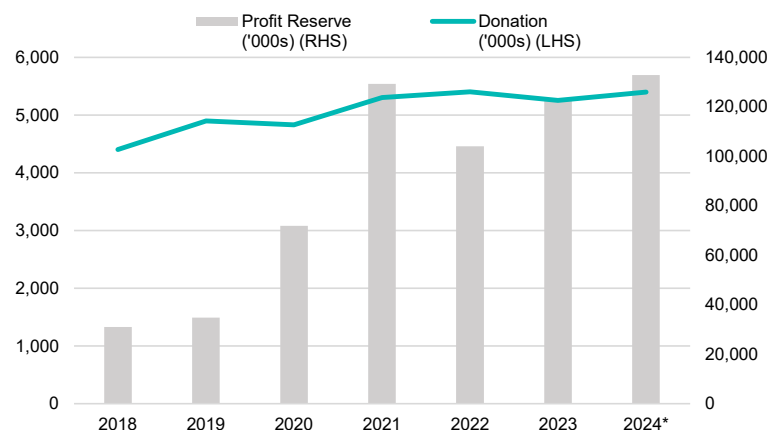
Issuer	Ex Div	Div Pay	Amount	Frank
CIN	30-Aug-24	16-Sep-24	\$0.6300	100%
PIA	30-Aug-24	16-Sep-24	\$0.0135	100%
QRI	4-Sep-24	16-Sep-24	\$0.0117	0%
AUI	26-Aug-24	17-Sep-24	\$0.0800	100%
AUI	26-Aug-24	17-Sep-24	\$0.2000	100%
DUI	26-Aug-24	17-Sep-24	\$0.0900	100%
PCX	2-Sep-24	17-Sep-24	\$0.0116	0%
PAI	29-Aug-24	20-Sep-24	\$0.0100	100%
PMC	29-Aug-24	20-Sep-24	\$0.0300	100%
ALI	6-Sep-24	27-Sep-24	\$0.0500	100%
IBC	5-Sep-24	27-Sep-24	\$0.0125	100%
GC1	11-Sep-24	30-Sep-24	\$0.0200	0%
NAC	10-Sep-24	30-Sep-24	\$0.0150	100%
NSC	10-Sep-24	30-Sep-24	\$0.0125	100%
PL8	13-Sep-24	30-Sep-24	\$0.0055	100%
RG8	29-Aug-24	30-Sep-24	\$0.0500	100%

Investing with purpose

Future Generation Australia (FGX) breaks the mould as to the purpose of an investment vehicle, offering an active portfolio whilst fulfilling a wider social purpose by supporting Australian non-for-profit organisations focused on children at risk. This is achieved through partnerships with various fund managers, who provide access to their investment products pro-bono by removing associated management and performance fees, which allows Future Generation to conduct an annual donation of 1% of assets under management. The manager has estimated an annual saving of circa \$8.6 million from fees forgone, allowing the fund to sustainably donate to its social impact partners.

FGX provides investors access to a diversified investment portfolio with exposure to 18 fund managers, held under a fund-of-funds approach. The Investment Committee has taken a long-term lens in designing the portfolio, taking a large weighting to small, mid and micro-cap strategies with an underweight position to large caps. Moreover, the investment committee looks to allocate capital amongst a wide array of funds, to reduce overall manager risk. When looking at the portfolio's composition against the broader index, the fund takes an active overweight position in consumer discretionary and industrials, whilst an underweight position in financials, materials and real estate.

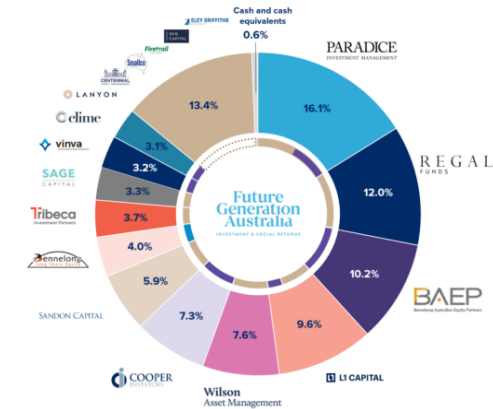
Figure 1 - FGX Annual Profit Reserve and Donation



SOURCE: COMPANY REPORTS

*AS AT 30 JUNE 2024

Figure 2 - FGX Fund Manager Distribution



SOURCE: FUTURE GENERATION AS OF 30 JUNE 2024

Over the last 7 years, the annual donation made by Future Generation Australia has grown to over \$5 million per annum, as shown in Figure 1 whilst accumulating a substantial profit reserve, indicating a sustainable dividend runway with net dividend coverage sitting at ~5.0 years. The manager took a more defensive tilt to the portfolio post-COVID, leading to softer performance over the last three years, reporting a pre-tax NTA return of 2.2% p.a. Performance has improved in the short term, leading to a reduction in the funds trading discount from an average of 13.8% over the last year to 9.6% currently.

Figure 3 - FGX Top Fund Exposures

Fund Manager	Investment	Strategy	% of Gross Assets
Paradise Investment Management	Australian Mid Cap Fund	Long equities	7.6%
	Equity Alpha Plus Fund	Absolute bias	7.5%
Regal Funds Management	Australia Long Short Equity Fund	Absolute bias	11.0%
Benelong Australia Equities Partners	Australia Equities Fund	Long equities	10.4%
L1 Capital	Long Short Fund	Absolute bias	6.0%
	Catalyst Fund	Long equities	3.1%

SOURCE: COMPANY REPORTS AS AT 31 DECEMBER 2023

LISTED INVESTMENT COMPANIES INDICATIVE NTA.

BELL POTTER

13 SEPTEMBER 2024

Bell Potter's Indicative NTA tracks the 'indicative' movement of a LIC's underlying NTA each month by monitoring the percentage movements of the disclosed holdings, and using an index to track the movement of the remaining positions. We have also included an adjusted indicative NTA and adjusted discount, where applicable, which removes the LIC distribution from the ex-dividend date until the receipt of the new NTA post the payment date.

ASX Code	Company/Trust Name	Investment Mandate	Market Cap. (M)	Share/Unit Price	Indicative NTA/NAV"	Indicative Premium/Discount"	Average Premium/Discount+					Prem/Disc Range (5 Year)+	
							3 Month	6 Month	1 Year	3 Year	5 Year	Low	High
Domestic Equity													
AFI	Australian Foundation Investment	Large	\$9,196	\$7.31	\$8.05	-9.2%	-7.8%	-6.5%	-4.2%	4.4%	4.6%	-9.3%	19.6%
ARG	Argo Investments	Large	\$6,737	\$8.85	\$9.79	-9.6%	-8.7%	-7.5%	-5.3%	0.0%	0.7%	-10.1%	10.9%
AUI	Australian United Investment	Large	\$1,301	\$10.50	\$11.89	-11.7%	-11.1%	-12.2%	-10.5%	-7.3%	-6.0%	-13.8%	1.5%
BKI	BKI Investment	Large/Medium	\$1,380	\$1.71	\$1.82	-6.0%	-6.7%	-6.2%	-3.3%	-2.8%	-2.8%	-9.4%	2.0%
DUI	Diversified United Investment	Large/Medium	\$1,124	\$5.21	\$5.92	-12.0%	-12.0%	-13.0%	-11.0%	-7.9%	-6.0%	-14.5%	0.0%
CIN	Carlton Investments	Large/Medium	\$786	\$29.70	\$39.49	-24.8%	-24.6%	-24.6%	-24.2%	-22.6%	-20.5%	-26.3%	-13.7%
WLE	WAM Leaders	Large/Medium	\$1,790	\$1.31	\$1.37 #	-4.6%	-0.9%	-0.7%	2.2%	4.5%	3.0%	-11.5%	16.1%
WHF	Whitefield Industrials	Large/Medium	\$648	\$5.52	\$6.27	-12.0%	-9.1%	-8.4%	-4.5%	-1.4%	-0.8%	-11.0%	10.7%
PIC	Perpetual Equity Investment	Large/Medium	\$453	\$1.19	\$1.28 ^	-6.7%	-5.2%	-6.1%	-5.7%	-3.8%	-4.6%	-13.6%	1.2%
AMH	AMCIL	Large/Medium	\$359	\$1.13	\$1.27	-11.2%	-12.0%	-12.9%	-11.8%	-5.0%	-5.7%	-15.2%	7.1%
CAM	Clime Capital	Large/Medium	\$119	\$0.82	\$0.80 *	1.9%	0.0%	-0.9%	-0.9%	-0.6%	-0.9%	-8.8%	6.5%
FSI	Flagship Investments	Large/Medium	\$48	\$1.86	\$2.62	-29.1%	-25.0%	-24.5%	-22.1%	-15.8%	-14.7%	-27.0%	0.2%
WAM	WAM Capital	Medium/Small	\$1,776	\$1.60	\$1.53 #	4.5%	1.4%	3.9%	8.2%	16.1%	18.1%	-2.4%	33.6%
OPH	Ophir High Conviction Fund	Medium/Small	\$585	\$2.63	\$2.98 *	-11.7%	-11.8%	-11.8%	-10.6%	-3.0%	-2.2%	-15.8%	21.8%
MIR	Mirabooka Investments	Medium/Small	\$631	\$3.25	\$3.27	-0.5%	1.8%	1.6%	0.4%	4.5%	3.4%	-5.8%	15.9%
WAX	WAM Research	Medium/Small	\$237	\$1.16	\$1.10 #	5.6%	4.4%	5.5%	8.2%	24.5%	27.0%	2.5%	52.7%
CDM	Cadence Capital	Medium/Small	\$216	\$0.73	\$1.00 #	-27.4%	-15.0%	-13.2%	-11.4%	-8.4%	-10.9%	-25.9%	5.0%
TOP	Thorney Opportunities	Medium/Small	\$117	\$0.64	\$0.94	-31.7%	-29.6%	-31.8%	-33.1%	-28.7%	-25.7%	-37.4%	-16.5%
RYD	Ryder Capital	Medium/Small	\$100	\$1.22	\$1.47 #	-17.2%	-17.0%	-16.4%	-15.2%	-12.8%	-12.5%	-22.4%	-4.8%
TEK	Thorney Technologies	Medium/Small	\$53	\$0.14	\$0.25	-45.0%	-43.9%	-39.7%	-37.0%	-30.3%	-25.2%	-46.8%	-0.8%
WAA	WAM Active	Medium/Small	\$67	\$0.88	\$0.91 #	-3.0%	-5.3%	-7.9%	-11.3%	-4.7%	-2.1%	-19.8%	13.8%
NAC	Naos Ex-50 Opportunities	Medium/Small	\$22	\$0.53	\$0.63 #	-16.7%	2.0%	0.7%	-0.7%	-8.9%	-12.5%	-28.9%	7.6%
WMI	WAM Microcap	Small/Micro	\$410	\$1.48	\$1.38 #	7.2%	4.9%	7.3%	11.2%	16.1%	13.5%	-7.7%	31.7%
SEC	Spheria Emerging Companies	Small/Micro	\$129	\$2.16	\$2.30 ^	-6.2%	-3.6%	-5.2%	-8.3%	-9.7%	-12.4%	-25.5%	-0.5%
NSC	Naos Small Cap Opportunities	Small/Micro	\$63	\$0.47	\$0.61 #	-23.0%	-11.6%	-10.4%	-10.7%	-12.9%	-15.4%	-37.5%	-4.7%
NCC	Naos Emerging Opportunities	Small/Micro	\$30	\$0.41	\$0.48 #	-14.6%	-5.4%	-5.0%	-8.5%	-11.3%	-9.9%	-20.9%	4.1%
ACQ	Acorn Capital Investment	Small/Micro	\$73	\$0.82	\$1.05 #	-22.3%	-20.6%	-16.0%	-12.1%	-6.6%	-8.0%	-25.1%	8.2%
DJW	Djerriwarr Investments	Income	\$831	\$3.15	\$3.40	-7.4%	-10.9%	-11.2%	-9.8%	-7.4%	-4.5%	-12.4%	11.6%
PL8	Plato Income Maximiser	Income	\$917	\$1.23	\$1.10 *	11.1%	11.6%	10.7%	13.5%	13.7%	11.4%	2.2%	22.1%
SNC	Sandon Capital Investments	Activist	\$113	\$0.80	\$0.90 #	-11.3%	-13.3%	-12.6%	-14.2%	-12.8%	-13.9%	-28.1%	-5.8%
WAR	WAM Strategic Value	Disc Capture	\$209	\$1.16	\$1.27 #	-8.7%	-14.2%	-14.4%	-14.0%	-11.0%	n/a	-16.9%	0.6%
FGX	Future Generation Investment	Fund of Funds	\$516	\$1.27	\$1.40 #	-9.6%	-13.2%	-14.6%	-13.8%	-10.1%	-10.0%	-17.3%	-2.8%

*The Indicative NTA has been adjusted for dividends. Dividends are removed from the NTA once the security goes ex-date and until the receipt of the new cum-dividend NTA. #The Indicative NTA is the actual reported monthly pre-tax/post-tax NTA as we have been unable to calculate the Indicative NTA within a reasonable level of accuracy. *The Indicative NTA is the actual reported weekly pre-tax/post-tax NTA as we have been unable to calculate the Indicative NTA within a reasonable level of accuracy. ^The Indicative NTA is the actual reported daily pre-tax/post-tax NTA as we have been unable to calculate the Indicative NTA within a reasonable level of accuracy. +Prem/Disc does not adjust for the dilution of unexercised options.

LISTED INVESTMENT COMPANIES INDICATIVE NTA.

BELL POTTER

Bell Potter's Indicative NTA tracks the 'indicative' movement of a LIC's underlying NTA each month by monitoring the percentage movements of the disclosed holdings, and using an index to track the movement of the remaining positions. We have also included an adjusted indicative NTA and adjusted discount, where applicable, which removes the LIC distribution from the ex-dividend date until the receipt of the new NTA post the payment date.

ASX Code	Company/Trust Name	Investment Mandate	Market Cap. (M)	Share/Unit Price	Indicative NTA/NAV"	Indicative Premium/Discount"	Average Premium/Discount+					Prem/Disc Range (5 Year)+	
							3 Month	6 Month	1 Year	3 Year	5 Year	Low	High
International Equity													
MFF	MFF Capital Investments	Global	\$2,225	\$3.84	\$4.23 *	-9.2%	-14.9%	-14.9%	-15.5%	-16.0%	-12.2%	-21.7%	6.3%
WGB	WAM Global	Global	\$806	\$2.27	\$2.49 #	-9.0%	-6.1%	-9.3%	-11.5%	-10.8%	-9.6%	-25.9%	5.8%
PMC	Platinum Capital	Global	\$406	\$1.38	\$1.46 *	-6.0%	-8.4%	-11.0%	-12.7%	-11.6%	-8.9%	-19.0%	5.8%
PGF	PM Capital Global Opportunities	Global	\$1,057	\$2.21	\$2.07 *	6.8%	1.5%	1.4%	1.7%	-1.3%	-7.5%	-22.2%	6.2%
PIA	Pengana International Equities	Global	\$283	\$1.10	\$1.26 *	-12.4%	-14.5%	-15.5%	-16.1%	-12.9%	-13.0%	-24.7%	-2.8%
WQG	WCM Global Growth	Global	\$271	\$1.54	\$1.53 *	0.8%	-2.4%	-3.6%	-6.8%	-6.5%	-5.6%	-21.4%	-2.3%
ALI	Argo Global Listed Infrastructure	Global (Infrastructure)	\$398	\$2.24	\$2.58 *	-13.2%	-13.8%	-11.8%	-10.6%	-3.9%	-4.4%	-20.9%	7.3%
LRT	Lowell Resources Fund	Global (Jnr Resources)	\$41	\$1.18	\$1.30	-9.4%	-10.9%	-12.1%	-11.7%	-12.8%	-15.3%	-25.8%	0.7%
GVF	Global Value Fund	Global (Disc Capture)	\$221	\$1.27	\$1.33 #	-4.7%	-7.2%	-7.7%	-7.7%	-5.2%	-4.7%	-15.1%	3.2%
FGG	Future Generation Global Investment	Global (Fund of Funds)	\$532	\$1.34	\$1.56 #	-14.6%	-15.1%	-17.0%	-17.2%	-13.9%	-14.0%	-22.9%	-3.0%
HM1	Hearts and Minds Investments	Global (High Conviction)	\$634	\$2.77	\$3.21 *	-13.7%	-18.8%	-17.1%	-17.4%	-12.8%	-7.1%	-22.1%	18.8%
PAI	Platinum Asia Investments	Asia	\$342	\$0.93	\$0.99 *	-6.1%	-10.7%	-12.7%	-14.3%	-12.3%	-9.9%	-18.6%	-0.1%
Alternatives													
LSF	L1 Long Short Fund	Long/Short (Global)	\$1,830	\$2.94	\$2.88 ^	2.2%	-0.7%	-2.2%	-2.2%	-3.6%	-8.4%	-29.4%	-0.8%
VG1	VGI Partners Global Investments	Long/Short (Global)	\$507	\$1.82	\$2.07 *	-12.3%	-13.5%	-14.0%	-15.0%	-15.8%	-14.5%	-22.5%	-4.5%
RF1	Regal Investment Fund	Long/Short (Global)	\$602	\$3.19	\$3.28 *	-2.7%	-5.2%	-6.4%	-6.4%	-0.4%	-1.6%	-27.1%	36.0%
TGF	Tribeca Global Natural Resources	Long/Short (Global)	\$120	\$1.52	\$1.88 *	-19.1%	-21.6%	-21.4%	-19.9%	-15.8%	-17.1%	-48.1%	-7.1%
RG8	Regal Asian Investments	Long/Short (Asia)	\$321	\$1.95	\$2.22 *	-12.2%	-14.4%	-14.4%	-14.4%	-15.1%	-15.6%	-25.8%	-4.5%
WMA	WAM Alternative Assets	Private Assets	\$201	\$1.03	\$1.18 #	-13.5%	-18.4%	-17.2%	-15.1%	-13.3%	n/a	-19.2%	-8.0%
D2O	Duxton Water	Water Entitlements	\$209	\$1.34	\$1.68 #	-20.2%	-8.4%	-8.4%	-5.5%	-10.7%	-13.0%	-22.6%	4.3%
PE1	Pengana Private Equity Trust	Private Equity (Global)	\$336	\$1.21	\$1.52 #	-20.6%	-9.9%	-11.4%	-10.4%	-5.6%	-2.1%	-17.8%	30.9%
BTI	Bailador Technology Investments	Private Equity (Tech)	\$176	\$1.19	\$1.69	-29.5%	-31.5%	-29.5%	-28.7%	-24.4%	-23.1%	-47.2%	13.7%
Fixed Interest													
GCI	Gryphon Capital Income Trust	ABS & RMBS	\$685	\$2.04	\$2.02 ^	1.2%	0.9%	1.1%	0.6%	-0.1%	-1.2%	-17.2%	4.5%
QRI	Qualitas Real Estate Income Fund	CRE	\$725	\$1.63	\$1.60 *	1.3%	1.3%	1.2%	0.3%	-3.1%	-2.9%	-18.8%	7.5%
MXT	Metrics Master Income Trust	Diversified Loans	\$2,197	\$2.07	\$2.01 ^	3.2%	2.7%	2.8%	2.0%	0.5%	0.0%	-15.5%	3.9%
MOT	Metrics Income Opportunities Trust	Private Credit	\$726	\$2.19	\$2.15 ^	2.0%	3.1%	2.7%	0.3%	-0.9%	-2.3%	-26.4%	5.1%
PCI	Perpetual Credit Income Trust	Domestic & Global Credit	\$552	\$1.14	\$1.10 ^	3.2%	1.1%	0.3%	-1.9%	-5.4%	-4.7%	-14.5%	5.7%
KKC	KKR Credit Income Fund	Global Credit	\$745	\$2.31	\$2.45 ^	-5.7%	-7.3%	-7.4%	-10.0%	-13.0%	n/a	-22.2%	1.1%
PCX	Pengana Global Private Credit Trust	Global Private Credit	\$162	\$2.06	\$2.00 #	3.0%	n/a	n/a	n/a	n/a	n/a	1.0%	1.0%

*The Indicative NTA has been adjusted for dividends. Dividends are removed from the NTA once the security goes ex-date and until the receipt of the new cum-dividend NTA. #The Indicative NTA is the actual reported monthly pre-tax/post-tax NTA as we have been unable to calculate the Indicative NTA within a reasonable level of accuracy. *The Indicative NTA is the actual reported weekly pre-tax/post-tax NTA as we have been unable to calculate the Indicative NTA within a reasonable level of accuracy. ^The Indicative NTA is the actual reported daily pre-tax/post-tax NTA as we have been unable to calculate the Indicative NTA within a reasonable level of accuracy. +Prem/Disc does not adjust for the dilution of unexercised options.

LISTED INVESTMENT COMPANIES INDICATIVE NTA.

BELL POTTER

We have enclosed a reference page for dividends. We have used historical dividend data for the dividend information, and manager guidance where appropriate. Please note that historical dividends are no guarantee of future dividends to be paid.

ASX Code	Company/Trust Name	Investment Mandate	Share/Unit Price	Market Cap. (M)	Dividend LTM*	Franking #	Franking Credits	Gross Dividend	Yearly Freq.	Net Yield*	Gross Yield*	Recent Declared Dividend/Distribution Amount	Ex-Date	Pay-Date
Domestic Equity														
AFI	Australian Foundation Investment	Large	\$7.31	\$9,196	\$0.260	100.0%	\$0.111	\$0.371	H	3.6%	5.1%	\$0.1450	14-Aug-24	30-Aug-24
ARG	Argo Investments	Large	\$8.85	\$6,737	\$0.345	100.0%	\$0.148	\$0.493	H	3.9%	5.6%	\$0.1800	16-Aug-24	13-Sep-24
AUI	Australian United Investment	Large	\$10.50	\$1,301	\$0.370	100.0%	\$0.159	\$0.529	H	3.5%	5.0%	\$0.2000	26-Aug-24	17-Sep-24
BKI	BKI Investment	Large/Medium	\$1.71	\$1,380	\$0.079	100.0%	\$0.034	\$0.112	H	4.6%	6.6%	\$0.0400	06-Aug-24	29-Aug-24
DUI	Diversified United Investment	Large/Medium	\$5.21	\$1,124	\$0.160	100.0%	\$0.069	\$0.229	H	3.1%	4.4%	\$0.0900	26-Aug-24	17-Sep-24
CIN	Carlton Investments	Large/Medium	\$29.70	\$786	\$1.010	100.0%	\$0.433	\$1.443	H	3.4%	4.9%	\$0.6300	30-Aug-24	16-Sep-24
WLE	WAM Leaders	Large/Medium	\$1.31	\$1,790	\$0.091	100.0%	\$0.039	\$0.130	H	6.9%	9.9%	n/a	n/a	n/a
WHF	Whitefield Industrials	Large/Medium	\$5.52	\$648	\$0.205	100.0%	\$0.088	\$0.293	H	3.7%	5.3%	n/a	n/a	n/a
PIC	Perpetual Equity Investment	Large/Medium	\$1.19	\$453	\$0.080	100.0%	\$0.034	\$0.114	H	6.7%	9.6%	\$0.0400	13-Sep-24	08-Oct-24
AMH	AMCIL	Large/Medium	\$1.13	\$359	\$0.035	100.0%	\$0.015	\$0.050	H	3.1%	4.4%	\$0.0250	06-Aug-24	28-Aug-24
CAM	Clime Capital	Large/Medium	\$0.82	\$119	\$0.054	100.0%	\$0.023	\$0.077	Q	6.6%	9.5%	\$0.0135	08-Oct-24	25-Oct-24
FSI	Flagship Investments	Large/Medium	\$1.86	\$48	\$0.101	100.0%	\$0.043	\$0.144	H	5.4%	7.8%	\$0.0520	14-Aug-24	29-Aug-24
WAM	WAM Capital	Medium/Small	\$1.60	\$1,776	\$0.155	80.0%	\$0.053	\$0.208	H	9.7%	13.0%	\$0.0775	21-Oct-24	31-Oct-24
OPH	Ophir High Conviction Fund	Medium/Small	\$2.63	\$585	\$0.186	0.0%	\$0.000	\$0.186	H	7.1%	7.1%	\$0.0750	28-Jun-24	20-Aug-24
MIR	Mirrabooka Investments	Medium/Small	\$3.25	\$631	\$0.105	100.0%	\$0.045	\$0.150	H	3.2%	4.6%	\$0.0650	30-Jul-24	16-Aug-24
WAX	WAM Research	Medium/Small	\$1.16	\$237	\$0.100	60.0%	\$0.026	\$0.126	H	8.6%	10.8%	\$0.0500	11-Oct-24	25-Oct-24
CDM	Cadence Capital	Medium/Small	\$0.73	\$216	\$0.060	100.0%	\$0.026	\$0.086	H	8.3%	11.8%	\$0.0300	15-Oct-24	31-Oct-24
TOP	Thorney Opportunities	Medium/Small	\$0.64	\$117	\$0.025	100.0%	\$0.011	\$0.036	H	3.9%	5.6%	\$0.0150	05-Sep-24	30-Sep-24
RYD	Ryder Capital	Medium/Small	\$1.22	\$100	\$0.090	100.0%	\$0.039	\$0.129	H	7.4%	10.5%	\$0.0500	19-Aug-24	13-Sep-24
TEK	Thorney Technologies	Medium/Small	\$0.14	\$53	\$0.000	-	\$0.000	\$0.000	n/a	0.0%	0.0%	n/a	n/a	n/a
WAA	WAM Active	Medium/Small	\$0.88	\$67	\$0.060	100.0%	\$0.026	\$0.086	H	6.8%	9.7%	\$0.0300	10-Oct-24	25-Oct-24
NAC	Naos Ex-50 Opportunities	Medium/Small	\$0.53	\$22	\$0.062	100.0%	\$0.026	\$0.088	Q	11.7%	16.7%	\$0.0150	10-Sep-24	30-Sep-24
WMI	WAM Microcap	Small/Micro	\$1.48	\$410	\$0.105	100.0%	\$0.045	\$0.150	H	7.1%	10.1%	\$0.0525	15-Oct-24	29-Oct-24
SEC	Spheria Emerging Companies	Small/Micro	\$2.16	\$129	\$0.120	100.0%	\$0.051	\$0.171	Q	5.6%	7.9%	\$0.0340	23-Jul-24	13-Aug-24
NSC	Naos Small Cap Opportunities	Small/Micro	\$0.47	\$63	\$0.050	100.0%	\$0.021	\$0.071	Q	10.6%	15.2%	\$0.0125	10-Sep-24	30-Sep-24
NCC	Naos Emerging Opportunities	Small/Micro	\$0.41	\$30	\$0.075	50.0%	\$0.016	\$0.091	H	18.3%	22.2%	\$0.0200	09-Oct-24	31-Oct-24
ACQ	Acom Capital Investment	Small/Micro	\$0.82	\$73	\$0.070	100.0%	\$0.030	\$0.100	H	8.6%	12.3%	n/a	n/a	n/a
DJW	Djerriwarrh Investments	Income	\$3.15	\$831	\$0.153	100.0%	\$0.065	\$0.218	H	4.8%	6.9%	\$0.0800	09-Aug-24	26-Aug-24
PL8	Plato Income Maximiser	Income	\$1.23	\$917	\$0.066	100.0%	\$0.028	\$0.094	M	5.4%	7.7%	\$0.0055	13-Sep-24	30-Sep-24
SNC	Sandon Capital Investments	Activist	\$0.80	\$113	\$0.055	100.0%	\$0.024	\$0.079	H	6.9%	9.9%	\$0.0275	21-Oct-24	07-Nov-24
WAR	WAM Strategic Value	Disc Capture	\$1.16	\$209	\$0.043	100.0%	\$0.018	\$0.061	H	3.7%	5.2%	\$0.0300	01-Oct-24	29-Oct-24
FGX	Future Generation Investment	Fund of Funds	\$1.27	\$516	\$0.067	100.0%	\$0.029	\$0.096	H	5.3%	7.6%	\$0.0350	16-Oct-24	29-Oct-24

*LTM Dividend is the sum of dividends paid over the last 12 months, excluding any special dividends paid. #Franking assumes a tax rate of 30%, actual company tax rate applied may differ.

LISTED INVESTMENT COMPANIES **INDICATIVE NTA.**

BELL POTTER

We have enclosed a reference page for dividends. We have used historical dividend data for the dividend information, and manager guidance where appropriate. Please note that historical dividends are no guarantee of future dividends to be paid.

ASX Code	Company/Trust Name	Investment Mandate	Share/Unit Price	Market Cap. (M)	Dividend LTM*	Franking #	Franking Credits	Gross Dividend	Yearly Freq.	Net Yield*	Gross Yield*	Recent Declared Dividend/Distribution Amount	Ex-Date	Pay-Date
International Equity														
MFF	MFF Capital Investments	Global	\$3.84	\$2,225	\$0.110	100.0%	\$0.047	\$0.157	H	2.9%	4.1%	\$0.0700	08-Oct-24	01-Nov-24
WGB	WAM Global	Global	\$2.27	\$806	\$0.118	100.0%	\$0.050	\$0.168	H	5.2%	7.4%	n/a	n/a	n/a
PMC	Platinum Capital	Global	\$1.38	\$406	\$0.060	100.0%	\$0.026	\$0.086	H	4.4%	6.2%	\$0.0300	29-Aug-24	20-Sep-24
PGF	PM Capital Global Opportunities	Global	\$2.21	\$1,057	\$0.100	100.0%	\$0.043	\$0.143	H	4.5%	6.5%	\$0.0550	11-Sep-24	10-Oct-24
PIA	Pengana International Equities	Global	\$1.10	\$283	\$0.054	100.0%	\$0.023	\$0.077	Q	4.9%	7.0%	\$0.0135	30-Aug-24	16-Sep-24
WQG	WCM Global Growth	Global	\$1.54	\$271	\$0.068	100.0%	\$0.029	\$0.097	Q	4.4%	6.3%	\$0.0181	12-Sep-24	30-Sep-24
ALI	Argo Global Listed Infrastructure	Global (Infrastructure)	\$2.24	\$398	\$0.085	100.0%	\$0.036	\$0.121	H	3.8%	5.4%	\$0.0500	06-Sep-24	27-Sep-24
LRT	Lowell Resources Fund	Global (Jnr Resources)	\$1.18	\$41	\$0.152	0.4%	\$0.000	\$0.152	Y	12.9%	13.0%	\$0.1521	28-Jun-24	31-Jul-24
GVF	Global Value Fund	Global (Disc Capture)	\$1.27	\$221	\$0.066	100.0%	\$0.028	\$0.094	H	5.2%	7.5%	\$0.0330	30-Sep-24	12-Nov-24
FGG	Future Generation Global Investment	Global (Fund of Funds)	\$1.34	\$532	\$0.072	100.0%	\$0.031	\$0.103	H	5.4%	7.7%	\$0.0370	17-Oct-24	30-Oct-24
HM1	Hearts and Minds Investments	Global (High Conviction)	\$2.77	\$634	\$0.140	100.0%	\$0.060	\$0.200	H	5.1%	7.2%	\$0.0750	11-Sep-24	17-Oct-24
PAI	Platinum Asia Investments	Asia	\$0.93	\$342	\$0.040	100.0%	\$0.017	\$0.057	H	4.3%	6.2%	\$0.0100	29-Aug-24	20-Sep-24
Alternatives														
LSF	L1 Long Short Fund	Long/Short (Global)	\$2.94	\$1,830	\$0.113	100.0%	\$0.048	\$0.161	H	3.8%	5.5%	\$0.0600	09-Sep-24	01-Oct-24
VG1	VGI Partners Global Investments	Long/Short (Global)	\$1.82	\$507	\$0.100	100.0%	\$0.043	\$0.143	H	5.5%	7.9%	\$0.0500	28-Aug-24	30-Sep-24
RF1	Regal Investment Fund	Long/Short (Global)	\$3.19	\$602	\$0.221	0.0%	\$0.000	\$0.221	H	6.9%	6.9%	\$0.1508	28-Jun-24	26-Aug-24
TGF	Tribeca Global Natural Resources	Long/Short (Global)	\$1.52	\$120	\$0.050	100.0%	\$0.021	\$0.071	Y	3.3%	4.7%	n/a	n/a	n/a
RG8	Regal Asian Investments	Long/Short (Asia)	\$1.95	\$321	\$0.100	100.0%	\$0.043	\$0.143	H	5.1%	7.3%	\$0.0500	29-Aug-24	30-Sep-24
WMA	WAM Alternative Assets	Private Assets	\$1.03	\$201	\$0.051	100.0%	\$0.022	\$0.073	H	5.0%	7.1%	\$0.0260	16-Oct-24	29-Oct-24
D2O	Duxton Water	Water Entitlements	\$1.34	\$209	\$0.071	100.0%	\$0.030	\$0.101	H	5.3%	7.6%	\$0.0370	10-Oct-24	25-Oct-24
PE1	Pengana Private Equity Trust	Private Equity (Global)	\$1.21	\$336	\$0.063	0.0%	\$0.000	\$0.063	H	5.2%	5.2%	\$0.0316	01-Jul-24	23-Jul-24
BTI	Bailador Technology Investments	Private Equity (Tech)	\$1.19	\$176	\$0.069	100.0%	\$0.030	\$0.099	H	5.8%	8.3%	\$0.0340	19-Aug-24	05-Sep-24
Fixed Interest														
GCI	Gryphon Capital Income Trust	ABS & RMBS	\$2.04	\$685	\$0.174	0.0%	\$0.000	\$0.174	M	8.5%	8.5%	\$0.0146	29-Aug-24	09-Sep-24
QRI	Qualitas Real Estate Income Fund	CRE	\$1.63	\$725	\$0.142	0.0%	\$0.000	\$0.142	M	8.7%	8.7%	\$0.0117	04-Sep-24	16-Sep-24
MXT	Metrics Master Income Trust	Diversified Loans	\$2.07	\$2,197	\$0.178	0.0%	\$0.000	\$0.178	M	8.6%	8.6%	\$0.0135	30-Aug-24	09-Sep-24
MOT	Metrics Income Opportunities Trust	Private Credit	\$2.19	\$726	\$0.192	0.0%	\$0.000	\$0.192	M	8.8%	8.8%	\$0.0123	30-Aug-24	09-Sep-24
PCI	Perpetual Credit Income Trust	Domestic & Global Credit	\$1.14	\$552	\$0.089	0.0%	\$0.000	\$0.089	M	7.8%	7.8%	\$0.0069	29-Aug-24	10-Sep-24
KKC	KKR Credit Income Fund	Global Credit	\$2.31	\$745	\$0.200	0.0%	\$0.000	\$0.200	M	8.7%	8.7%	\$0.0167	29-Aug-24	13-Sep-24
PCX	Pengana Global Private Credit Trust	Global Private Credit	\$2.06	\$162	\$0.012	0.0%	\$0.000	\$0.012	n/a	n/a	n/a	\$0.0116	02-Sep-24	17-Sep-24

*LTM Dividend is the sum of dividends paid over the last 12 months, excluding any special dividends paid. #Franking assumes a tax rate of 30%, actual company tax rate applied may differ.

LISTED INVESTMENT COMPANIES **INDICATIVE NTA.**

BELL POTTER

Measurement of LIC performance is calculated after all operating expenses, provision and before the payment of taxes (after realised capital gains taxes if reported by the Company). Performance also assumes the reinvestment of net dividends, but does not incorporate franking.

ASX Code	Company/Trust Name	Investment Mandate	Performance Data (Pre-Tax NTA p.a.)						Performance Data (Share/Unit Price p.a.)					
			3 Month	6 Month	1 Year	3 Year	5 Year	10 Year	3 Month	6 Month	1 Year	3 Year	5 Year	10 Year
Domestic Equity														
AFI	Australian Foundation Investment	Large	-1.1%	4.9%	13.4%	5.4%	7.7%	7.2%	-3.0%	-2.5%	4.8%	0.2%	6.3%	5.4%
ARG	Argo Investments	Large	-0.5%	4.8%	10.4%	5.9%	6.5%	6.7%	-1.6%	-1.7%	2.6%	2.5%	5.0%	5.1%
AUI	Australian United Investment	Large	-0.2%	5.2%	14.2%	7.6%	7.4%	7.4%	2.3%	6.1%	10.6%	4.7%	6.9%	6.9%
BKI	BKI Investment	Large/Medium	-2.1%	2.7%	9.2%	7.0%	6.2%	5.9%	-0.9%	-2.9%	1.8%	6.0%	6.1%	4.9%
DUI	Diversified United Investment	Large/Medium	-0.3%	5.0%	11.1%	6.0%	7.1%	8.3%	2.2%	3.4%	7.8%	2.9%	6.7%	7.7%
CIN	Carlton Investments	Large/Medium	-2.9%	1.4%	9.7%	3.5%	4.4%	5.9%	-1.6%	1.5%	9.1%	2.8%	2.2%	4.5%
WLE	WAM Leaders	Large/Medium	-3.6%	-0.8%	0.7%	4.7%	7.5%	n/a	-5.4%	-4.4%	-7.0%	-1.4%	9.0%	n/a
WHF	Whitefield Industrials	Large/Medium	-0.1%	9.3%	16.7%	4.8%	6.0%	6.8%	-0.9%	3.2%	3.5%	-2.5%	5.1%	6.2%
PIC	Perpetual Equity Investment	Large/Medium	-4.1%	5.6%	4.4%	2.4%	7.9%	n/a	3.3%	13.5%	13.2%	3.9%	9.6%	n/a
AMH	AMCIL	Large/Medium	-0.8%	7.6%	17.5%	3.6%	9.0%	7.6%	0.5%	7.8%	15.0%	0.7%	8.7%	6.1%
CAM	Clime Capital	Large/Medium	-3.1%	0.2%	1.7%	-0.7%	2.3%	3.1%	1.1%	3.4%	5.0%	1.2%	2.7%	4.3%
FSI	Flagship Investments	Large/Medium	-5.0%	8.1%	26.0%	1.0%	7.7%	7.9%	-4.2%	10.0%	23.0%	-2.4%	6.8%	7.0%
WAM	WAM Capital	Medium/Small	-1.4%	7.4%	15.5%	3.0%	5.3%	6.9%	-7.4%	0.3%	6.0%	-5.0%	1.4%	4.5%
OPH	Ophir High Conviction Fund	Medium/Small	0.2%	10.1%	8.5%	0.4%	7.4%	n/a	-0.4%	11.2%	11.2%	-9.4%	5.7%	n/a
MIR	Mirabooka Investments	Medium/Small	-1.9%	5.3%	14.9%	1.3%	10.2%	8.9%	-4.8%	8.8%	21.8%	0.1%	9.7%	7.1%
WAX	WAM Research	Medium/Small	0.5%	8.7%	17.7%	4.5%	6.8%	8.4%	-5.9%	8.6%	11.3%	-6.2%	3.2%	6.6%
CDM	Cadence Capital	Medium/Small	-0.9%	5.7%	8.8%	-1.9%	5.1%	1.6%	-4.1%	4.5%	2.1%	-5.8%	5.8%	-0.5%
TOP	Thorney Opportunities	Medium/Small	4.2%	18.7%	35.9%	14.3%	5.0%	9.6%	18.3%	33.2%	48.7%	12.7%	4.7%	7.4%
RYD	Ryder Capital	Medium/Small	8.6%	20.3%	24.8%	-5.8%	2.8%	n/a	6.6%	14.5%	26.1%	-8.8%	3.0%	n/a
TEK	Thorney Technologies	Medium/Small	-2.5%	-1.7%	-9.6%	-21.6%	-5.3%	n/a	-16.7%	-26.5%	-28.6%	-33.8%	-12.5%	n/a
WAA	WAM Active	Medium/Small	-0.4%	6.4%	14.3%	1.2%	3.6%	4.6%	-5.8%	13.7%	29.4%	-3.4%	2.6%	1.5%
NAC	Naos Ex-50 Opportunities	Medium/Small	-28.3%	-36.1%	-44.7%	-26.4%	-7.3%	n/a	-28.2%	-38.3%	-38.4%	-19.6%	-3.6%	n/a
WMI	WAM Microcap	Small/Micro	-1.2%	9.1%	10.6%	1.4%	8.1%	n/a	-4.1%	4.1%	7.4%	-1.8%	9.8%	n/a
SEC	Spheria Emerging Companies	Small/Micro	-7.2%	-2.2%	6.9%	-0.5%	6.0%	n/a	0.5%	15.2%	23.6%	2.5%	9.7%	n/a
NSC	Naos Small Cap Opportunities	Small/Micro	-14.8%	-24.6%	-28.7%	-16.0%	0.2%	n/a	-27.8%	-30.8%	-29.8%	-17.9%	1.8%	n/a
NCC	Naos Emerging Opportunities	Small/Micro	-21.3%	-30.2%	-37.1%	-20.9%	-6.4%	-2.4%	-34.6%	-32.9%	-31.6%	-19.1%	-6.4%	-2.2%
ACQ	Acom Capital Investment	Small/Micro	1.4%	1.5%	1.6%	-5.1%	5.0%	5.8%	-6.8%	-17.7%	-10.8%	-11.7%	3.0%	4.5%
DJW	Djerriwarrh Investments	Income	-0.6%	3.1%	11.3%	4.8%	4.8%	4.7%	-0.3%	-0.6%	9.3%	3.4%	1.5%	0.6%
PL8	Plato Income Maximiser	Income	-1.2%	3.9%	10.7%	4.7%	5.7%	n/a	1.4%	5.4%	0.6%	3.9%	7.1%	n/a
SNC	Sandon Capital Investments	Activist	-0.8%	-2.4%	14.5%	-3.8%	4.6%	4.9%	-3.0%	-2.3%	20.7%	-4.2%	4.6%	4.5%
WAR	WAM Strategic Value	Disc Capture	0.6%	9.6%	13.7%	2.7%	n/a	n/a	-1.1%	6.9%	16.9%	-2.2%	n/a	n/a
FGX	Future Generation Investment	Fund of Funds	-0.8%	4.0%	10.4%	2.2%	6.7%	n/a	0.7%	9.8%	11.7%	0.2%	5.3%	n/a

LISTED INVESTMENT COMPANIES **INDICATIVE NTA.**

BELL POTTER

Measurement of LIC performance is calculated after all operating expenses, provision and before the payment of taxes (after realised capital gains taxes if reported by the Company). Performance also assumes the reinvestment of net dividends, but does not incorporate franking.

ASX Code	Company/Trust Name	Investment Mandate	Performance Data (Pre-Tax NTA p.a.)						Performance Data (Share/Unit Price p.a.)					
			3 Month	6 Month	1 Year	3 Year	5 Year	10 Year	3 Month	6 Month	1 Year	3 Year	5 Year	10 Year
International Equity														
MFF	MFF Capital Investments	Global	0.2%	18.6%	29.8%	12.3%	9.8%	14.6%	3.4%	21.7%	44.4%	12.3%	9.5%	13.4%
WGB	WAM Global	Global	-4.3%	5.7%	9.0%	0.7%	5.0%	n/a	-1.7%	13.8%	26.2%	-0.1%	8.0%	n/a
PMC	Platinum Capital	Global	-1.9%	3.3%	2.8%	1.1%	3.7%	4.5%	6.9%	11.4%	16.2%	1.9%	2.4%	2.8%
PGF	PM Capital Global Opportunities	Global	1.2%	16.2%	23.7%	14.0%	15.5%	12.4%	10.8%	18.9%	31.0%	18.3%	21.2%	13.0%
PIA	Pengana International Equities	Global	-6.2%	3.6%	7.8%	0.2%	5.6%	6.1%	-2.3%	9.2%	15.8%	-0.3%	6.7%	6.9%
WQG	WCM Global Growth	Global	-1.0%	17.8%	23.0%	3.6%	10.1%	n/a	3.8%	20.1%	36.2%	3.3%	11.6%	n/a
ALI	Argo Global Listed Infrastructure	Global (Infrastructure)	-2.1%	4.7%	2.9%	3.9%	2.3%	n/a	-0.5%	1.0%	-7.3%	1.2%	1.4%	n/a
LRT	Lowell Resources Fund	Global (Jnr Resources)	3.5%	-4.1%	7.6%	4.0%	27.9%	n/a	10.4%	-0.5%	16.2%	3.7%	35.7%	n/a
GVF	Global Value Fund	Global (Disc Capture)	1.7%	5.8%	13.0%	11.7%	11.5%	n/a	6.4%	10.4%	16.2%	9.1%	11.1%	n/a
FGG	Future Generation Global Investment	Global (Fund of Funds)	-2.8%	8.0%	9.4%	-0.4%	4.8%	n/a	2.4%	12.7%	19.3%	-0.1%	3.6%	n/a
HM1	Hearts and Minds Investments	Global (High Conviction)	-1.9%	8.5%	11.7%	-5.6%	4.7%	n/a	-1.9%	9.9%	20.7%	-11.3%	1.6%	n/a
PAI	Platinum Asia Investments	Asia	2.0%	9.0%	4.6%	-4.0%	4.0%	n/a	7.0%	13.5%	12.8%	-3.5%	3.4%	n/a
Alternatives														
LSF	L1 Long Short Fund	Long/Short (Global)	-0.4%	7.3%	11.6%	7.9%	16.1%	n/a	10.4%	9.6%	17.7%	11.4%	20.3%	n/a
VG1	VGI Partners Global Investments	Long/Short (Global)	2.3%	15.4%	17.8%	-1.5%	1.8%	n/a	2.7%	16.1%	26.4%	-2.2%	-0.3%	n/a
RF1	Regal Investment Fund	Long/Short (Global)	11.3%	16.3%	22.6%	10.5%	20.6%	n/a	9.4%	19.4%	30.2%	-1.5%	18.9%	n/a
TGF	Tribeca Global Natural Resources	Long/Short (Global)	2.0%	0.6%	-8.3%	-5.5%	-2.0%	n/a	6.0%	-9.2%	-5.6%	-9.7%	-3.3%	n/a
RG8	Regal Asian Investments	Long/Short (Asia)	2.9%	8.2%	13.5%	0.4%	n/a	n/a	7.8%	7.4%	10.7%	1.7%	n/a	n/a
WMA	WAM Alternative Assets	Private Assets	0.0%	3.2%	2.4%	4.5%	n/a	n/a	-3.4%	-3.4%	-0.5%	3.5%	n/a	n/a
D2O	Duxton Water	Water Entitlements	-4.0%	-4.0%	-10.9%	1.8%	3.7%	n/a	-7.0%	-8.5%	-12.9%	4.1%	5.4%	n/a
PE1	Pengana Private Equity Trust	Private Equity (Global)	-1.1%	3.3%	1.3%	11.0%	9.9%	n/a	-3.8%	-1.6%	-4.0%	11.8%	8.0%	n/a
BTI	Bailador Technology Investments	Private Equity (Tech)	-3.9%	-0.9%	12.3%	7.8%	8.4%	n/a	-8.9%	-5.3%	6.7%	0.8%	6.2%	n/a
Fixed Interest														
GCI	Gryphon Capital Income Trust	ABS & RMBS	2.2%	4.6%	9.3%	6.8%	6.1%	n/a	1.7%	2.8%	15.2%	7.2%	5.8%	n/a
QRI	Qualitas Real Estate Income Fund	CRE	2.2%	4.4%	9.3%	7.6%	7.1%	n/a	2.1%	3.4%	19.5%	7.7%	7.1%	n/a
MXT	Metrics Master Income Trust	Diversified Loans	2.1%	4.3%	9.4%	7.2%	6.3%	n/a	2.1%	5.3%	17.7%	7.8%	6.6%	n/a
MOT	Metrics Income Opportunities Trust	Private Credit	1.9%	4.4%	10.0%	10.3%	9.0%	n/a	1.3%	6.4%	20.4%	11.2%	9.4%	n/a
PCI	Perpetual Credit Income Trust	Domestic & Global Credit	2.1%	4.8%	10.2%	5.9%	5.0%	n/a	3.4%	10.2%	28.2%	9.8%	5.7%	n/a
KKC	KKR Credit Income Fund	Global Credit	0.0%	5.2%	13.3%	5.9%	n/a	n/a	0.9%	8.2%	30.7%	7.7%	n/a	n/a
PCX	Pengana Global Private Credit Trust	Global Private Credit	n/a	n/a	n/a	n/a	n/a	n/a	n/a	n/a	n/a	n/a	n/a	n/a

LISTED INVESTMENT COMPANIES INDICATIVE NTA.

BELL POTTER

The effective impact on the share price if the premium or discount were to normalise to the historical averages. The Bell Potter's Indicative NTA is not without error, and to be used as a guide only. As such we have included the average error (average monthly NTA less indicative NTA), average absolute error (average monthly NTA less indicative NTA on an absolute basis), and the range of minimum and maximum errors.

ASX Code	Company/Trust Name	Investment Mandate	Share/Unit Price Impact if Premium/Discount normalises*				Share/Unit Price Impact if Premium/Discount normalises is annualised+				Average Error	Average Absolute Error	Error Range	
			6 Month	1 Year	3 Year	5 Year	6 Month	1 Year	3 Year	5 Year			Min	Max
Domestic Equity														
AFI	Australian Foundation Investment	Large	2.7%	5.0%	13.6%	13.8%	5.6%	5.0%	4.4%	2.6%	-0.2%	0.5%	-4.4%	1.6%
ARG	Argo Investments	Large	2.1%	4.2%	9.6%	10.2%	4.2%	4.2%	3.1%	2.0%	-0.1%	0.5%	-2.4%	2.7%
AUI	Australian United Investment	Large	-0.5%	1.2%	4.4%	5.7%	-1.0%	1.2%	1.4%	1.1%	-0.2%	0.5%	-2.5%	2.0%
BKI	BKI Investment	Large/Medium	-0.2%	2.7%	3.3%	3.2%	-0.4%	2.7%	1.1%	0.6%	0.0%	0.6%	-4.3%	3.0%
DUI	Diversified United Investment	Large/Medium	-1.0%	1.0%	4.2%	6.0%	-2.0%	1.0%	1.4%	1.2%	-0.1%	0.5%	-3.3%	3.2%
CIN	Carlton Investments	Large/Medium	0.2%	0.6%	2.2%	4.2%	0.3%	0.6%	0.7%	0.8%	-0.5%	1.0%	-9.3%	7.2%
WLE	WAM Leaders	Large/Medium	3.9%	6.8%	9.1%	7.6%	7.9%	6.8%	3.0%	1.5%	n/a	n/a	n/a	n/a
WHF	Whitefield Industrials	Large/Medium	3.6%	7.5%	10.6%	11.2%	7.4%	7.5%	3.4%	2.1%	-0.2%	0.8%	-7.1%	3.1%
PIC	Perpetual Equity Investment	Large/Medium	0.6%	1.0%	2.9%	2.0%	1.1%	1.0%	0.9%	0.4%	n/a	n/a	n/a	n/a
AMH	AMCIL	Large/Medium	-1.6%	-0.6%	6.2%	5.5%	-3.3%	-0.6%	2.0%	1.1%	0.1%	0.9%	-4.0%	3.4%
CAM	Clime Capital	Large/Medium	-2.8%	-2.8%	-2.5%	-2.8%	-5.5%	-2.8%	-0.8%	-0.6%	n/a	n/a	n/a	n/a
FSI	Flagship Investments	Large/Medium	4.7%	7.1%	13.4%	14.4%	9.6%	7.1%	4.3%	2.7%	n/a	n/a	n/a	n/a
WAM	WAM Capital	Medium/Small	-0.6%	3.7%	11.6%	13.5%	-1.3%	3.7%	3.7%	2.6%	n/a	n/a	n/a	n/a
OPH	Ophir High Conviction Fund	Medium/Small	-0.1%	1.1%	8.6%	9.4%	-0.2%	1.1%	2.8%	1.8%	n/a	n/a	n/a	n/a
MIR	Mirrabooka Investments	Medium/Small	2.1%	0.9%	5.0%	3.9%	4.2%	0.9%	1.6%	0.8%	0.0%	0.8%	-2.3%	4.8%
WAX	WAM Research	Medium/Small	-0.1%	2.6%	18.8%	21.4%	-0.2%	2.6%	5.9%	4.0%	n/a	n/a	n/a	n/a
CDM	Cadence Capital	Medium/Small	14.2%	16.0%	19.0%	16.5%	30.4%	16.0%	6.0%	3.1%	n/a	n/a	n/a	n/a
TOP	Thorney Opportunities	Medium/Small	-0.1%	-1.4%	3.0%	6.0%	-0.2%	-1.4%	1.0%	1.2%	0.2%	0.8%	-2.8%	5.6%
RYD	Ryder Capital	Medium/Small	0.8%	1.9%	4.4%	4.7%	1.6%	1.9%	1.4%	0.9%	n/a	n/a	n/a	n/a
TEK	Thorney Technologies	Medium/Small	5.4%	8.0%	14.7%	19.8%	11.0%	8.0%	4.7%	3.7%	n/a	n/a	n/a	n/a
WAA	WAM Active	Medium/Small	-5.0%	-8.3%	-1.7%	0.9%	-9.7%	-8.3%	-0.6%	0.2%	n/a	n/a	n/a	n/a
NAC	Naos Ex-50 Opportunities	Medium/Small	17.4%	16.0%	7.7%	4.2%	37.8%	16.0%	2.5%	0.8%	n/a	n/a	n/a	n/a
WMI	WAM Microcap	Small/Micro	0.1%	4.0%	8.9%	6.4%	0.2%	4.0%	2.9%	1.2%	n/a	n/a	n/a	n/a
SEC	Spheria Emerging Companies	Small/Micro	1.0%	-2.1%	-3.5%	-6.3%	2.0%	-2.1%	-1.2%	-1.3%	n/a	n/a	n/a	n/a
NSC	Naos Small Cap Opportunities	Small/Micro	12.6%	12.2%	10.0%	7.5%	26.7%	12.2%	3.2%	1.5%	n/a	n/a	n/a	n/a
NCC	Naos Emerging Opportunities	Small/Micro	9.6%	6.1%	3.3%	4.7%	20.2%	6.1%	1.1%	0.9%	n/a	n/a	n/a	n/a
ACQ	Acorn Capital Investment	Small/Micro	6.3%	10.2%	15.7%	14.3%	13.1%	10.2%	5.0%	2.7%	n/a	n/a	n/a	n/a
DJW	Djerriwarrh Investments	Income	-3.7%	-2.4%	0.0%	2.9%	-7.3%	-2.4%	0.0%	0.6%	0.1%	0.6%	-2.5%	3.5%
PL8	Plato Income Maximiser	Income	-0.4%	2.4%	2.6%	0.3%	-0.7%	2.4%	0.9%	0.1%	n/a	n/a	n/a	n/a
SNC	Sandon Capital Investments	Activist	-1.3%	-2.9%	-1.5%	-2.6%	-2.6%	-2.9%	-0.5%	-0.5%	n/a	n/a	n/a	n/a
WAR	WAM Strategic Value	Disc Capture	-5.7%	-5.3%	-2.3%	n/a	-11.1%	-5.3%	-0.8%	n/a	n/a	n/a	n/a	n/a
FGX	Future Generation Investment	Fund of Funds	-5.0%	-4.2%	-0.5%	-0.4%	-9.7%	-4.2%	-0.2%	-0.1%	n/a	n/a	n/a	n/a

*Refers to the current share price divided by the Indicative Pre-Tax NTA as compared to the average 6m, 1y, 3y and 5y Discount/Premium share price to pre-tax NTA as at end of the previous month, over the relevant time period of 1, 3, 5 and 10 years. +Refers to the current share price divided by the Indicative Pre-Tax NTA as compared to the average 6m, 1y, 3y and 5y Discount/Premium share price to pre-tax NTA as at end of the previous month, over the relevant time period of 1, 3, 5 and 10 years.

LISTED INVESTMENT COMPANIES INDICATIVE NTA.

BELL POTTER

The effective impact on the share price if the premium or discount were to normalise to the historical averages. The Bell Potter's Indicative NTA is not without error, and to be used as a guide only. As such we have included the average error (average monthly NTA less indicative NTA), average absolute error (average monthly NTA less indicative NTA on an absolute basis), and the range of minimum and maximum errors.

ASX Code	Company/Trust Name	Investment Mandate	Share/Unit Price Impact if Premium/Discount normalises*				Share/Unit Price Impact if Premium/Discount normalises is annualised+				Average Error	Average Absolute Error	Error Range	
			6 Month	1 Year	3 Year	5 Year	6 Month	1 Year	3 Year	5 Year			Min	Max
International Equity														
MFF	MFF Capital Investments	Global	-5.7%	-6.3%	-6.7%	-3.0%	-11.1%	-6.3%	-2.3%	-0.6%	n/a	n/a	n/a	n/a
WGB	WAM Global	Global	-0.3%	-2.5%	-1.8%	-0.6%	-0.5%	-2.5%	-0.6%	-0.1%	n/a	n/a	n/a	n/a
PMC	Platinum Capital	Global	-5.0%	-6.8%	-5.6%	-2.9%	-9.7%	-6.8%	-1.9%	-0.6%	n/a	n/a	n/a	n/a
PGF	PM Capital Global Opportunities	Global	-5.3%	-5.1%	-8.1%	-14.2%	-10.4%	-5.1%	-2.8%	-3.0%	n/a	n/a	n/a	n/a
PIA	Pengana International Equities	Global	-3.1%	-3.7%	-0.6%	-0.6%	-6.1%	-3.7%	-0.2%	-0.1%	n/a	n/a	n/a	n/a
WQG	WCM Global Growth	Global	-4.3%	-7.6%	-7.3%	-6.4%	-8.5%	-7.6%	-2.5%	-1.3%	n/a	n/a	n/a	n/a
ALI	Argo Global Listed Infrastructure	Global (Infrastructure)	1.4%	2.6%	9.3%	8.8%	2.8%	2.6%	3.0%	1.7%	n/a	n/a	n/a	n/a
LRT	Lowell Resources Fund	Global (Jnr Resources)	-2.7%	-2.3%	-3.4%	-5.9%	-5.3%	-2.3%	-1.1%	-1.2%	0.1%	2.2%	-5.2%	7.7%
GVF	Global Value Fund	Global (Disc Capture)	-3.0%	-3.1%	-0.5%	-0.1%	-5.9%	-3.1%	-0.2%	0.0%	n/a	n/a	n/a	n/a
FGG	Future Generation Global Investment	Global (Fund of Funds)	-2.3%	-2.6%	0.7%	0.7%	-4.6%	-2.6%	0.2%	0.1%	n/a	n/a	n/a	n/a
HM1	Hearts and Minds Investments	Global (High Conviction)	-3.4%	-3.7%	0.9%	6.6%	-6.6%	-3.7%	0.3%	1.3%	n/a	n/a	n/a	n/a
PAI	Platinum Asia Investments	Asia	-6.6%	-8.2%	-6.1%	-3.8%	-12.7%	-8.2%	-2.1%	-0.8%	n/a	n/a	n/a	n/a
Alternatives														
LSF	L1 Long Short Fund	Long/Short (Global)	-4.4%	-4.4%	-5.9%	-10.6%	-8.7%	-4.4%	-2.0%	-2.2%	n/a	n/a	n/a	n/a
VG1	VGI Partners Global Investments	Long/Short (Global)	-1.6%	-2.7%	-3.4%	-2.2%	-3.2%	-2.7%	-1.2%	-0.4%	n/a	n/a	n/a	n/a
RF1	Regal Investment Fund	Long/Short (Global)	-3.7%	-3.7%	2.3%	1.2%	-7.3%	-3.7%	0.8%	0.2%	n/a	n/a	n/a	n/a
TGF	Tribeca Global Natural Resources	Long/Short (Global)	-2.2%	-0.8%	3.4%	2.0%	-4.4%	-0.8%	1.1%	0.4%	n/a	n/a	n/a	n/a
RG8	Regal Asian Investments	Long/Short (Asia)	-2.2%	-2.2%	-2.9%	-3.5%	-4.4%	-2.2%	-1.0%	-0.7%	n/a	n/a	n/a	n/a
WMA	WAM Alternative Assets	Private Assets	-3.7%	-1.6%	0.2%	n/a	-7.3%	-1.6%	0.1%	n/a	n/a	n/a	n/a	n/a
D2O	Duxton Water	Water Entitlements	11.8%	14.7%	9.5%	7.3%	25.0%	14.7%	3.1%	1.4%	n/a	n/a	n/a	n/a
PE1	Pengana Private Equity Trust	Private Equity (Global)	9.2%	10.2%	15.0%	18.5%	19.1%	10.2%	4.8%	3.5%	n/a	n/a	n/a	n/a
BTI	Bailador Technology Investments	Private Equity (Tech)	0.0%	0.8%	5.1%	6.4%	0.0%	0.8%	1.7%	1.2%	n/a	n/a	n/a	n/a
Fixed Interest														
GCI	Gryphon Capital Income Trust	ABS & RMBS	-0.1%	-0.6%	-1.3%	-2.4%	-0.2%	-0.6%	-0.4%	-0.5%	n/a	n/a	n/a	n/a
QRI	Qualitas Real Estate Income Fund	CRE	-0.1%	-1.0%	-4.4%	-4.2%	-0.2%	-1.0%	-1.5%	-0.9%	n/a	n/a	n/a	n/a
MXT	Metrics Master Income Trust	Diversified Loans	-0.4%	-1.2%	-2.7%	-3.2%	-0.7%	-1.2%	-0.9%	-0.6%	n/a	n/a	n/a	n/a
MOT	Metrics Income Opportunities Trust	Private Credit	0.6%	-1.7%	-2.9%	-4.3%	1.3%	-1.7%	-1.0%	-0.9%	n/a	n/a	n/a	n/a
PCI	Perpetual Credit Income Trust	Domestic & Global Credit	-2.8%	-5.0%	-8.6%	-7.9%	-5.6%	-5.0%	-2.9%	-1.6%	n/a	n/a	n/a	n/a
KKC	KKR Credit Income Fund	Global Credit	-1.7%	-4.3%	-7.2%	n/a	-3.3%	-4.3%	-2.5%	n/a	n/a	n/a	n/a	n/a
PCX	Pengana Global Private Credit Trust	Global Private Credit	n/a	n/a	n/a	n/a	n/a	n/a	n/a	n/a	n/a	n/a	n/a	n/a

*Refers to the current share price divided by the Indicative Pre-Tax NTA as compared to the average 6m, 1y, 3y and 5y Discount/Premium share price to pre-tax NTA as at end of the previous month, over the relevant time period of 1, 3, 5 and 10 years. +Refers to the current share price divided by the Indicative Pre-Tax NTA as compared to the average 6m, 1y, 3y and 5y Discount/Premium share price to pre-tax NTA as at end of the previous month, over the relevant time period of 1, 3, 5 and 10 years.

LISTED INVESTMENT COMPANIES INDICATIVE NTA.

BELL POTTER

A number of LICs under our coverage currently have options outstanding. Options dilute the NTA when exercised and therefore have an impact on the Premium or Discount on a look through basis.

ASX Code	Company/Trust Name	Investment Mandate	Option Code	Shares/Units On Issue (M)	Options '000	Strike	Share/Unit Price	Option Price	Expiry	Asset Backing after %		Effective Prem/Disc after %	
										Exercised 100%	50%	% Exc. 100%	50%
Domestic Equity													
AFI	Australian Foundation Investment	Large	n/a	1,258	n/a	n/a	\$7.31	n/a	n/a	n/a	n/a	n/a	n/a
ARG	Argo Investments	Large	n/a	761	n/a	n/a	\$8.85	n/a	n/a	n/a	n/a	n/a	n/a
AUI	Australian United Investment	Large	n/a	124	n/a	n/a	\$10.50	n/a	n/a	n/a	n/a	n/a	n/a
BKI	BKI Investment	Large/Medium	n/a	807	n/a	n/a	\$1.71	n/a	n/a	n/a	n/a	n/a	n/a
DUI	Diversified United Investment	Large/Medium	n/a	216	n/a	n/a	\$5.21	n/a	n/a	n/a	n/a	n/a	n/a
CIN	Carlton Investments	Large/Medium	n/a	26	n/a	n/a	\$29.70	n/a	n/a	n/a	n/a	n/a	n/a
WLE	WAM Leaders	Large/Medium	n/a	1,366	n/a	n/a	\$1.31	n/a	n/a	n/a	n/a	n/a	n/a
WHF	Whitefield Industrials	Large/Medium	n/a	117	n/a	n/a	\$5.52	n/a	n/a	n/a	n/a	n/a	n/a
PIC	Perpetual Equity Investment	Large/Medium	n/a	381	n/a	n/a	\$1.19	n/a	n/a	n/a	n/a	n/a	n/a
AMH	AMCIL	Large/Medium	n/a	318	n/a	n/a	\$1.13	n/a	n/a	n/a	n/a	n/a	n/a
CAM	Clime Capital	Large/Medium	n/a	146	n/a	n/a	\$0.82	n/a	n/a	n/a	n/a	n/a	n/a
FSI	Flagship Investments	Large/Medium	n/a	26	n/a	n/a	\$1.86	n/a	n/a	n/a	n/a	n/a	n/a
WAM	WAM Capital	Medium/Small	n/a	1,113	n/a	n/a	\$1.60	n/a	n/a	n/a	n/a	n/a	n/a
OPH	Ophir High Conviction Fund	Medium/Small	n/a	223	n/a	n/a	\$2.63	n/a	n/a	n/a	n/a	n/a	n/a
MIR	Mirrabooka Investments	Medium/Small	n/a	194	n/a	n/a	\$3.25	n/a	n/a	n/a	n/a	n/a	n/a
WAX	WAM Research	Medium/Small	n/a	204	n/a	n/a	\$1.16	n/a	n/a	n/a	n/a	n/a	n/a
CDM	Cadence Capital	Medium/Small	n/a	298	n/a	n/a	\$0.73	n/a	n/a	n/a	n/a	n/a	n/a
TOP	Thorney Opportunities	Medium/Small	n/a	182	n/a	n/a	\$0.64	n/a	n/a	n/a	n/a	n/a	n/a
RYD	Ryder Capital	Medium/Small	n/a	82	n/a	n/a	\$1.22	n/a	n/a	n/a	n/a	n/a	n/a
TEK	Thorney Technologies	Medium/Small	n/a	391	n/a	n/a	\$0.14	n/a	n/a	n/a	n/a	n/a	n/a
WAA	WAM Active	Medium/Small	n/a	76	n/a	n/a	\$0.88	n/a	n/a	n/a	n/a	n/a	n/a
NAC	Naos Ex-50 Opportunities	Medium/Small	NACO	43	10,706	\$0.900	\$0.53	\$0.004	31-Dec-26	\$0.63	\$0.63	-16.7%	-16.7%
WMI	WAM Microcap	Small/Micro	n/a	277	n/a	n/a	\$1.48	n/a	n/a	n/a	n/a	n/a	n/a
SEC	Spheria Emerging Companies	Small/Micro	n/a	60	n/a	n/a	\$2.16	n/a	n/a	n/a	n/a	n/a	n/a
NSC	Naos Small Cap Opportunities	Small/Micro	n/a	135	n/a	n/a	\$0.47	n/a	n/a	n/a	n/a	n/a	n/a
NCC	Naos Emerging Opportunities	Small/Micro	NCCO	74	14,235	\$0.670	\$0.41	\$0.008	31-Dec-26	\$0.48	\$0.48	-14.6%	-14.6%
ACQ	Acom Capital Investment	Small/Micro	n/a	89	n/a	n/a	\$0.82	n/a	n/a	n/a	n/a	n/a	n/a
DJW	Djerriwarr Investments	Income	n/a	264	n/a	n/a	\$3.15	n/a	n/a	n/a	n/a	n/a	n/a
PL8	Plato Income Maximiser	Income	n/a	749	n/a	n/a	\$1.23	n/a	n/a	n/a	n/a	n/a	n/a
SNC	Sandon Capital Investments	Activist	n/a	143	n/a	n/a	\$0.80	n/a	n/a	n/a	n/a	n/a	n/a
WAR	WAM Strategic Value	Disc Capture	n/a	180	n/a	n/a	\$1.16	n/a	n/a	n/a	n/a	n/a	n/a
FGX	Future Generation Investment	Fund of Funds	n/a	408	n/a	n/a	\$1.27	n/a	n/a	n/a	n/a	n/a	n/a

Options outstanding and shares on issue are as at the date of the report.

LISTED INVESTMENT COMPANIES INDICATIVE NTA.

BELL POTTER

A number of LICs under our coverage currently have options outstanding. Options dilute the NTA when exercised and therefore have an impact on the Premium or Discount on a look through basis.

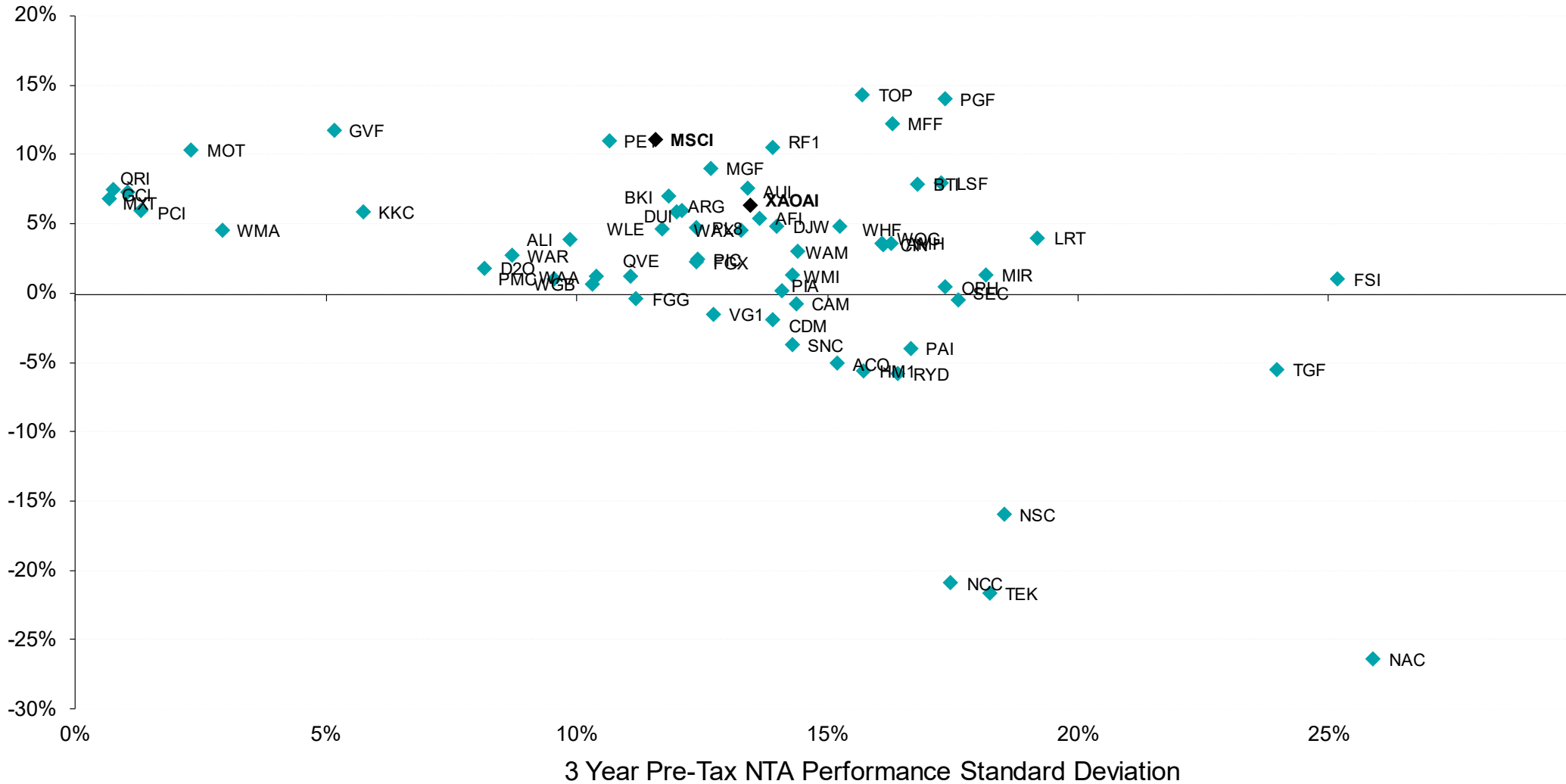
ASX Code	Company/Trust Name	Investment Mandate	Option Code	Shares/Units On Issue (M)	Options '000	Strike	Share/Unit Price	Option Price	Expiry	Asset Backing after %		Effective Prem/Disc after % Exc.	
										Exercised 100%	50%	100%	50%
International Equity													
MFF	MFF Capital Investments	Global	n/a	579	n/a	n/a	\$3.84	n/a	n/a	n/a	n/a	n/a	n/a
WGB	WAM Global	Global	n/a	355	n/a	n/a	\$2.27	n/a	n/a	n/a	n/a	n/a	n/a
PMC	Platinum Capital	Global	n/a	295	n/a	n/a	\$1.38	n/a	n/a	n/a	n/a	n/a	n/a
PGF	PM Capital Global Opportunities	Global	n/a	478	n/a	n/a	\$2.21	n/a	n/a	n/a	n/a	n/a	n/a
PIA	Pengana International Equities	Global	n/a	257	n/a	n/a	\$1.10	n/a	n/a	n/a	n/a	n/a	n/a
WQG	WCM Global Growth	Global	n/a	176	n/a	n/a	\$1.54	n/a	n/a	n/a	n/a	n/a	n/a
ALI	Argo Global Listed Infrastructure	Global (Infrastructure)	n/a	178	n/a	n/a	\$2.24	n/a	n/a	n/a	n/a	n/a	n/a
LRT	Lowell Resources Fund	Global (Jnr Resources)	n/a	35	n/a	n/a	\$1.18	n/a	n/a	n/a	n/a	n/a	n/a
GVF	Global Value Fund	Global (Disc Capture)	n/a	175	n/a	n/a	\$1.27	n/a	n/a	n/a	n/a	n/a	n/a
FGG	Future Generation Global Investment	Global (Fund of Funds)	n/a	398	n/a	n/a	\$1.34	n/a	n/a	n/a	n/a	n/a	n/a
HM1	Hearts and Minds Investments	Global (High Conviction)	n/a	229	n/a	n/a	\$2.77	n/a	n/a	n/a	n/a	n/a	n/a
PAI	Platinum Asia Investments	Asia	n/a	370	n/a	n/a	\$0.93	n/a	n/a	n/a	n/a	n/a	n/a
Alternatives													
LSF	L1 Long Short Fund	Long/Short (Global)	n/a	622	n/a	n/a	\$2.94	n/a	n/a	n/a	n/a	n/a	n/a
VG1	VGI Partners Global Investments	Long/Short (Global)	n/a	279	n/a	n/a	\$1.82	n/a	n/a	n/a	n/a	n/a	n/a
RF1	Regal Investment Fund	Long/Short (Global)	n/a	189	n/a	n/a	\$3.19	n/a	n/a	n/a	n/a	n/a	n/a
TGF	Tribeca Global Natural Resources	Long/Short (Global)	n/a	79	n/a	n/a	\$1.52	n/a	n/a	n/a	n/a	n/a	n/a
RG8	Regal Asian Investments	Long/Short (Asia)	n/a	165	n/a	n/a	\$1.95	n/a	n/a	n/a	n/a	n/a	n/a
WMA	WAM Alternative Assets	Private Assets	n/a	196	n/a	n/a	\$1.03	n/a	n/a	n/a	n/a	n/a	n/a
D2O	Duxton Water	Water Entitlements	D2OOA	156	38,166	\$1.920	\$1.34	\$0.022	10-May-26	\$1.68	\$1.68	-20.2%	-20.2%
PE1	Pengana Private Equity Trust	Private Equity (Global)	n/a	277	n/a	n/a	\$1.21	n/a	n/a	n/a	n/a	n/a	n/a
BTI	Bailador Technology Investments	Private Equity (Tech)	n/a	148	n/a	n/a	\$1.19	n/a	n/a	n/a	n/a	n/a	n/a
Fixed Interest													
GCI	Gryphon Capital Income Trust	ABS & RMBS	n/a	336	n/a	n/a	\$2.04	n/a	n/a	n/a	n/a	n/a	n/a
QRI	Qualitas Real Estate Income Fund	CRE	n/a	446	n/a	n/a	\$1.63	n/a	n/a	n/a	n/a	n/a	n/a
MXT	Metrics Master Income Trust	Diversified Loans	n/a	1,061	n/a	n/a	\$2.07	n/a	n/a	n/a	n/a	n/a	n/a
MOT	Metrics Income Opportunities Trust	Private Credit	n/a	332	n/a	n/a	\$2.19	n/a	n/a	n/a	n/a	n/a	n/a
PCI	Perpetual Credit Income Trust	Domestic & Global Credit	n/a	486	n/a	n/a	\$1.14	n/a	n/a	n/a	n/a	n/a	n/a
KKC	KKR Credit Income Fund	Global Credit	n/a	323	n/a	n/a	\$2.31	n/a	n/a	n/a	n/a	n/a	n/a
PCX	Pengana Global Private Credit Trust	Global Private Credit	n/a	78	n/a	n/a	\$2.06	n/a	n/a	n/a	n/a	n/a	n/a

Options outstanding and shares on issue are as at the date of the report.

LISTED INVESTMENT COMPANIES CHARTS.

BELL POTTER

Chart 1: 3 Year Pre-Tax Performance v Standard Deviation



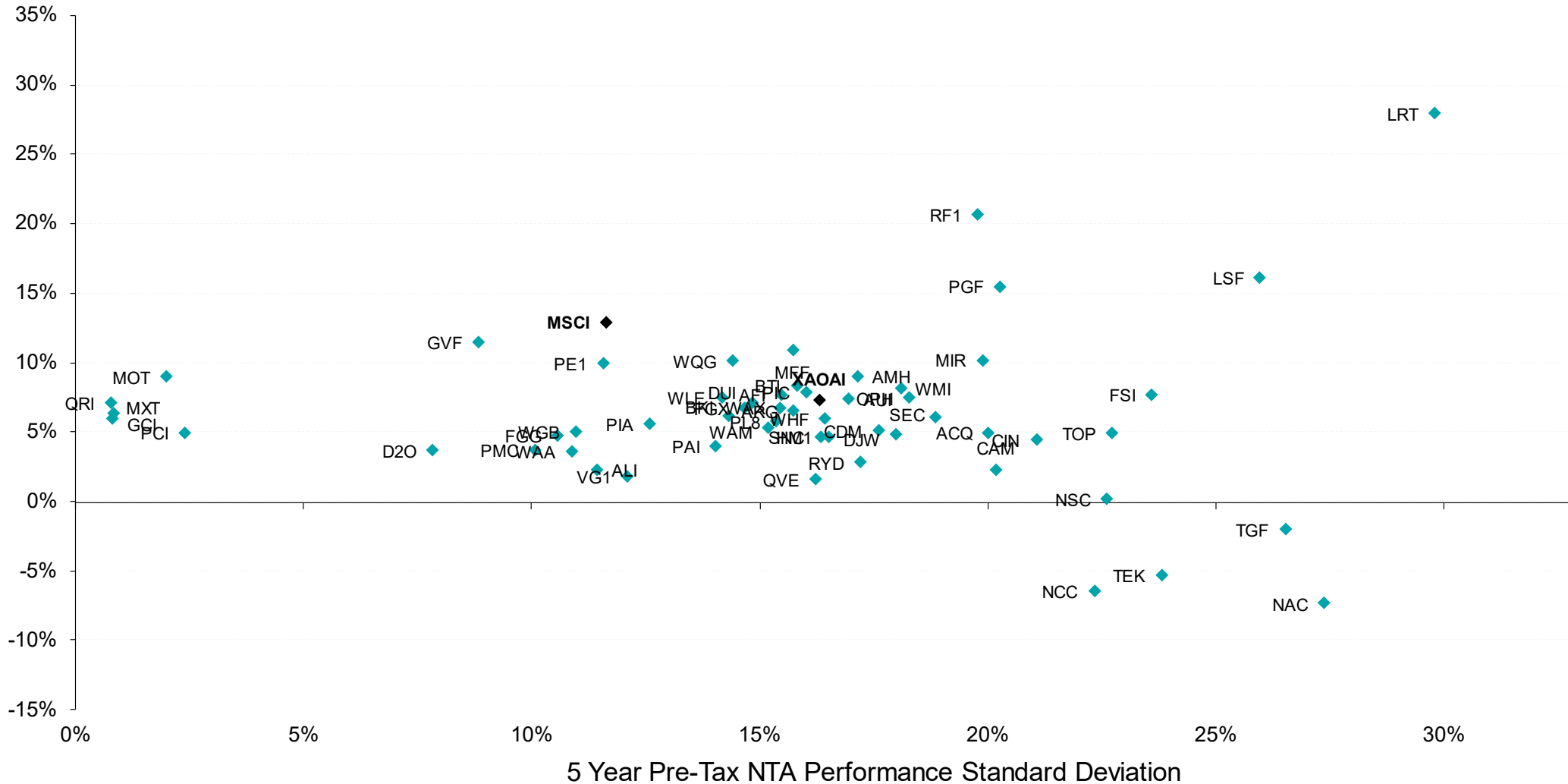
Source: IRESS, Bell Potter Estimates

Measurement of LIC performance is calculated after all operating expenses, provision and payment of both income and realised capital gains tax and assumes the reinvestment of dividends, but does not incorporate franking. XAOAI: S&P/ASX 200 Accumulation Index, MSCI: MSCI World Total Return Index (in AUD).

LISTED INVESTMENT COMPANIES CHARTS.

BELL POTTER

Chart 2: 5 Year Pre-Tax Performance v Standard Deviation



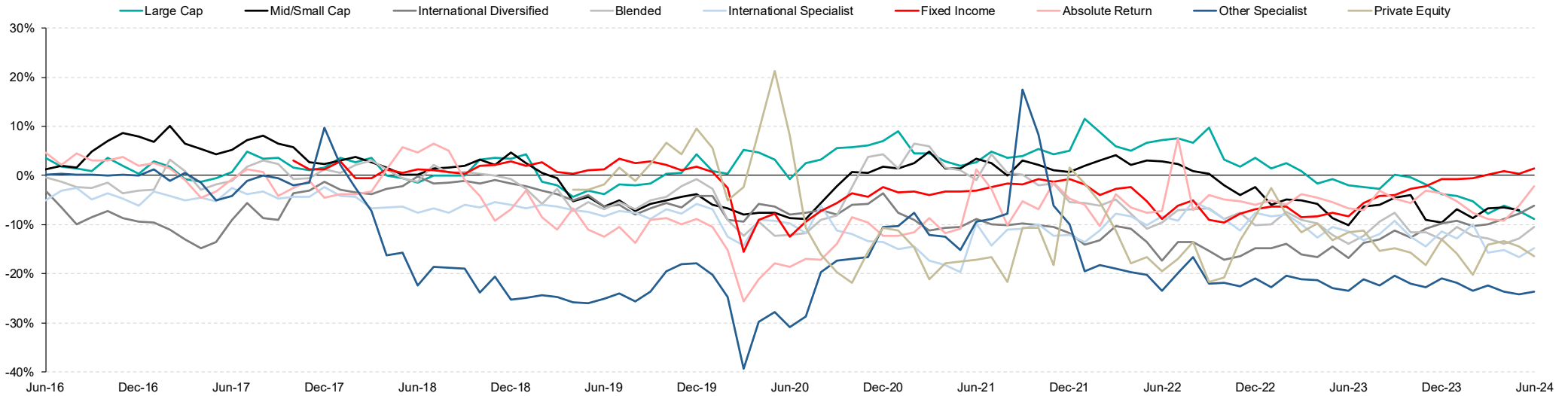
Source: IRESS, Bell Potter Estimates

Measurement of LIC performance is calculated after all operating expenses, provision and payment of both income and realised capital gains tax and assumes the reinvestment of dividends, but does not incorporate franking. XAOAI: S&P/ASX 200 Accumulation Index, MSCI: MSCI World Total Return Index (in AUD).

LISTED INVESTMENT COMPANIES CHARTS.

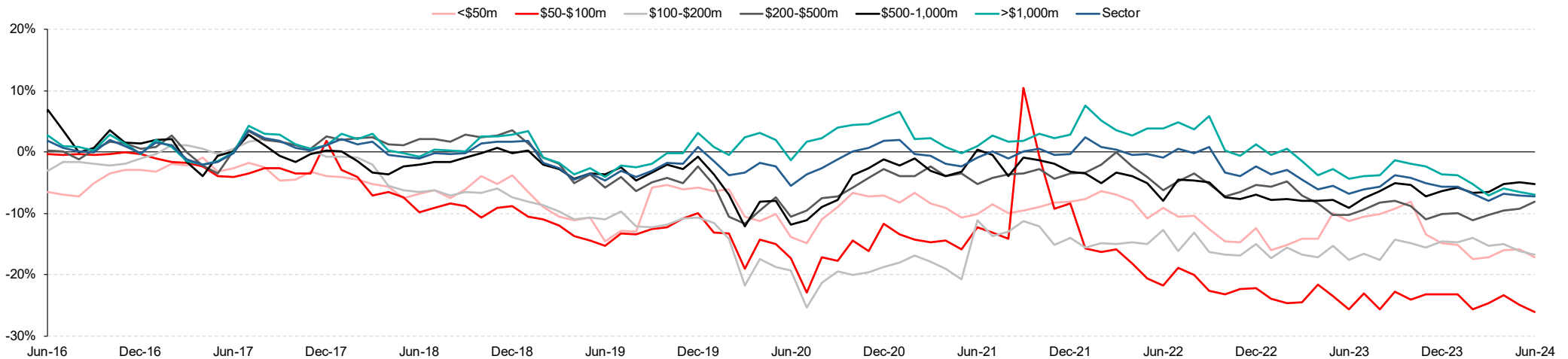
BELL POTTER

Chart 3: Premium/Discount by Investment Mandate (Mkt Cap Weighted)



Source: IRESS, Company Data, Bell Potter Estimates

Chart 4: Premium/Discount by Market Capitalisation Band (Mkt Cap Weighted)

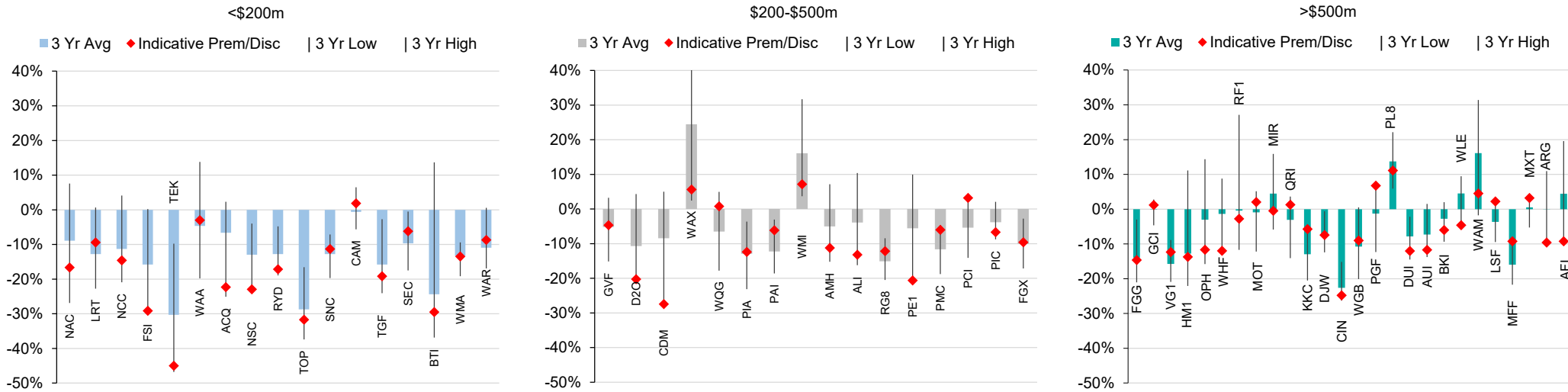


Source: IRESS, Company Data, Bell Potter Estimates

LISTED INVESTMENT COMPANIES CHARTS.

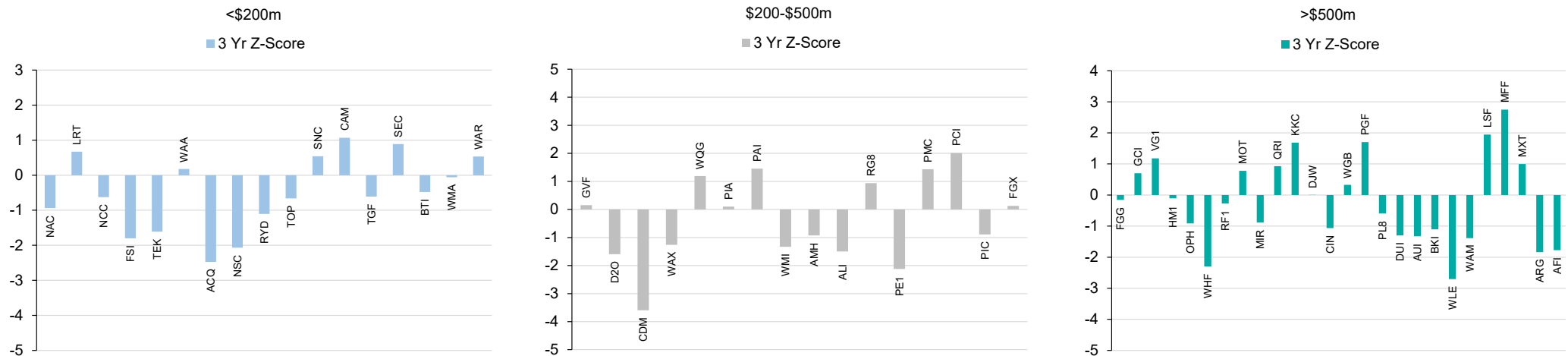
BELL POTTER

Chart 5: Premium/Discount Relationship Across Market Capitalisation Band



Source: IRESS, Company Data, Bell Potter Estimates

Chart 6: Standardised Premium/Discount by Variance Around Mean (Across Market Capitalisation Band)

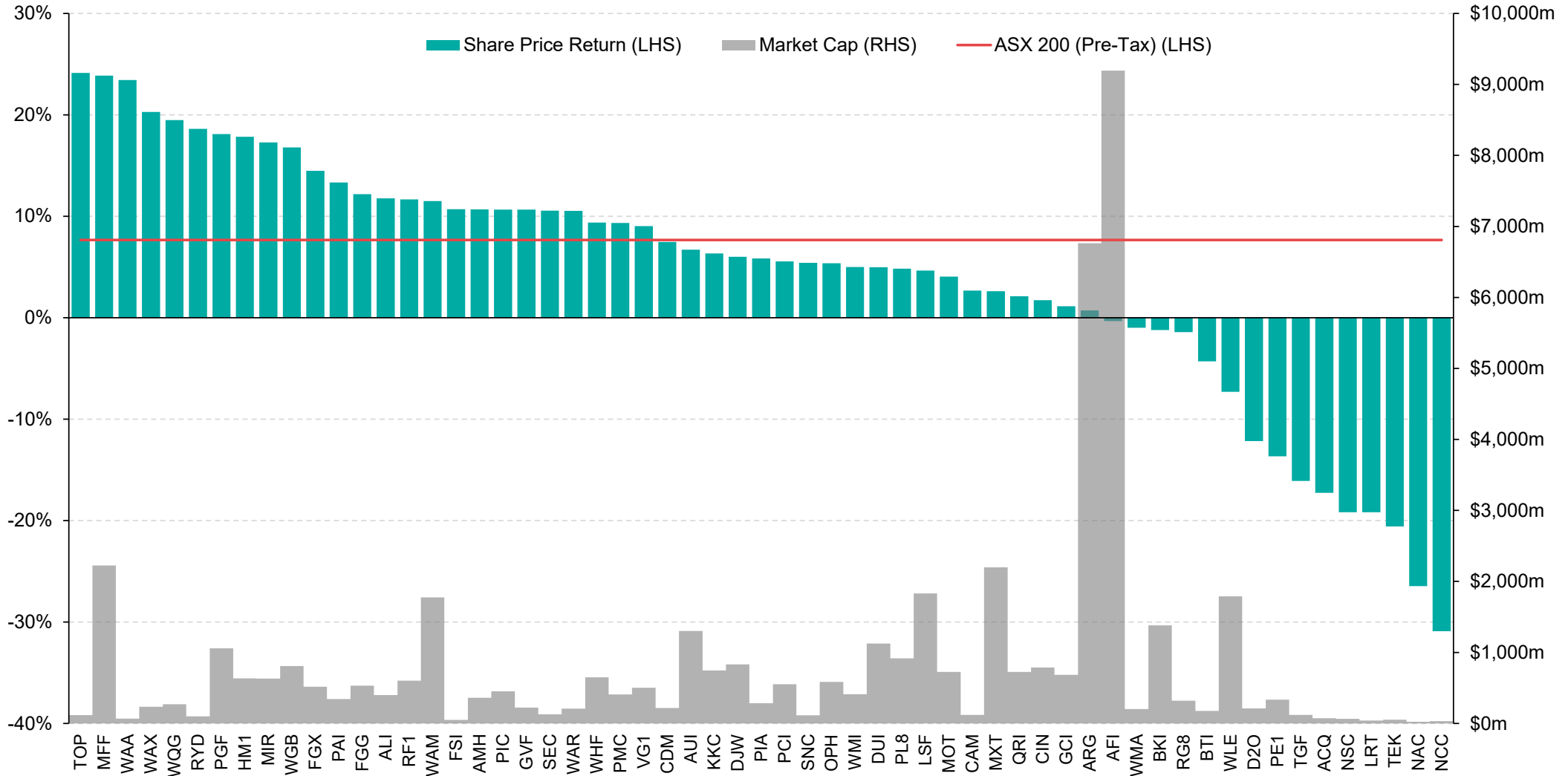


Source: IRESS, Company Data, Bell Potter Estimates

LISTED INVESTMENT COMPANIES CHARTS.

BELL POTTER

Chart 7: Share Price Performance since 31 December 2023 (Including Net Dividends)



Source: IRESS

Listed Investment Companies

Bell Potter Securities Limited

ACN25 006 390 7721
Level 29, 101 Collins Street
Melbourne, Victoria, 3000
Telephone +61 3 9256 8700
www.bellpotter.com.au

Bell Potter Securities (HK) Limited

Room 1601, 16/F
Prosperity Tower, 39 Queens Road
Central, Hong Kong, 0000
Telephone +852 3750 8400

Bell Potter Securities (US) LLC

Floor 39
444 Madison Avenue, New York
NY 10022, U.S.A
Telephone +1 917 819 1410

Bell Potter Securities (UK) Limited

16 Berkeley Street
London, England
W1J 8DZ, United Kingdom
Telephone +44 7734 2929

The following may affect your legal rights. Important Disclaimer:

This document is a private communication to clients and is not intended for public circulation or for the use of any third party, without the prior approval of Bell Potter Securities Limited. In the USA and the UK this research is only for institutional investors. It is not for release, publication or distribution in whole or in part to any persons in the two specified countries. **In Hong Kong**, this research is being distributed by Bell Potter Securities (HK) Limited which is licensed and regulated by the Securities and Futures Commission, Hong Kong. **In the United States**, this research is issued and distributed by Bell Potter Securities (US) LLC which is a registered broker-dealer and member of FINRA. Any person receiving this report from Bell Potter Securities (US) LLC and wishing to transact in any security described herein should do so with Bell Potter Securities (US) LLC.

This is general investment advice only and does not constitute personal advice to any person. Because this document has been prepared without consideration of any specific client's financial situation, particular needs and investment objectives ('relevant personal circumstances'), a Bell Potter Securities Limited investment adviser (or the financial services licensee, or the representative of such licensee, who has provided you with this report by arrangement with Bell Potter Securities Limited) should be made aware of your relevant personal circumstances and consulted before any investment decision is made on the basis of this document.

While this document is based on information from sources which are considered reliable, Bell Potter Securities Limited has not verified independently the information contained in the document and Bell Potter Securities Limited and its directors, employees and consultants do not represent, warrant or guarantee, expressly or impliedly, that the information contained in this document is complete or accurate. Nor does Bell Potter Securities Limited accept any responsibility for updating any advice, views opinions, or recommendations contained in this document or for correcting any error or omission which may become apparent after the document has been issued.

Except insofar as liability under any statute cannot be excluded, Bell Potter Securities Limited and its directors, employees and consultants do not accept any liability (whether arising in contract, in tort or negligence or otherwise) for any error or omission in this document or for any resulting loss or damage (whether direct, indirect, consequential or otherwise) suffered by the recipient of this document or any other person.

Research Policies:

For Bell Potter's Research Coverage Decision Making Process and Research Independence Policy, please refer to our company website:

<https://www.bellpotter.com.au/topnavigation/private-clients/stockbroking/research>

Disclosure of interest:

Bell Potter Securities Limited, its employees, consultants and its associates within the meaning of Chapter 7 of the Corporations Law may receive commissions, underwriting and management fees from transactions involving securities referred to in this document (which its representatives may directly share) and may from time to time hold interests in the securities referred to in this document.

Additional disclosure:

Bell Potter Securities Limited acted as a Co-Manager or Lead Manager to the following capital raisings and/or IPOs: FGG, FGX, GCI, HM1, LSF, MOT, MXT, NBI, PCI, PE1, QRI, RF1, TOP, TEK, TGF, WAR, WGB, WQG. Bell Potter Securities Limited received fees for these services.

ANALYST CERTIFICATION

Each research analyst primarily responsible for the content of this research report, in whole or in part, certifies that with respect to each security or issuer that the analyst covered in this report: (1) all of the views expressed accurately reflect his or her personal views about those securities or issuers and were prepared in an independent manner and (2) no part of his or her compensation was, is, or will be, directly or indirectly, related to the specific recommendations or views expressed by that research analyst in the research report.