

# LISTED INVESTMENT COMPANIES INDICATIVE NTA.

## BELL POTTER

10 MARCH 2025

Bell Potter's Indicative NTA tracks the 'indicative' movement of a LIC's underlying NTA each month by monitoring the percentage movements of the disclosed holdings, and using an index to track the movement of the remaining positions. We have also included an adjusted indicative NTA and adjusted discount, where applicable, which removes the LIC distribution from the ex-dividend date until the receipt of the new NTA post the payment date.

| ASX Code               | Company/Trust Name               | Investment Mandate | Market Cap. (M) | Share/Unit Price | Indicative NTA/NAV" | Indicative Premium/Discount" | Average Premium/Discount+ |         |        |        |        | Prem/Disc Range (5 Year)+ |        |
|------------------------|----------------------------------|--------------------|-----------------|------------------|---------------------|------------------------------|---------------------------|---------|--------|--------|--------|---------------------------|--------|
|                        |                                  |                    |                 |                  |                     |                              | 3 Month                   | 6 Month | 1 Year | 3 Year | 5 Year | Low                       | High   |
| <b>Domestic Equity</b> |                                  |                    |                 |                  |                     |                              |                           |         |        |        |        |                           |        |
| AFI                    | Australian Foundation Investment | Large              | \$9,110         | \$7.24           | \$7.83              | -7.5%                        | -10.8%                    | -10.4%  | -9.0%  | 0.2%   | 3.3%   | -11.2%                    | 19.6%  |
| ARG                    | Argo Investments                 | Large              | \$6,740         | \$8.83           | \$9.54              | -7.4%                        | -11.4%                    | -11.2%  | -9.9%  | -2.8%  | -0.5%  | -13.0%                    | 10.9%  |
| AUI                    | Australian United Investment     | Large              | \$1,263         | \$10.18          | \$11.76             | -13.4%                       | -14.5%                    | -12.5%  | -12.5% | -8.9%  | -7.1%  | -15.5%                    | 1.5%   |
| BKI                    | BKI Investment                   | Large/Medium       | \$1,356         | \$1.68           | \$1.79              | -6.0%                        | -9.9%                     | -8.8%   | -8.0%  | -3.5%  | -3.7%  | -10.2%                    | 2.0%   |
| DUI                    | Diversified United Investment    | Large/Medium       | \$1,102         | \$5.12           | \$6.00              | -14.6%                       | -15.8%                    | -14.5%  | -13.9% | -9.9%  | -7.3%  | -18.1%                    | 0.0%   |
| CIN                    | Carlton Investments              | Large/Medium       | \$800           | \$30.28          | \$42.67             | -29.0%                       | -26.5%                    | -25.4%  | -25.1% | -23.4% | -21.7% | -27.2%                    | -13.7% |
| WLE                    | WAM Leaders                      | Large/Medium       | \$1,753         | \$1.28           | \$1.31 #            | -2.1%                        | -7.4%                     | -4.6%   | -3.1%  | 2.6%   | 3.0%   | -11.5%                    | 16.2%  |
| WHF                    | Whitefield Industrials           | Large/Medium       | \$634           | \$5.28           | \$6.08              | -13.2%                       | -12.2%                    | -11.4%  | -10.4% | -3.5%  | -1.5%  | -14.5%                    | 10.7%  |
| PIC                    | Perpetual Equity Investment      | Large/Medium       | \$472           | \$1.24           | \$1.23 ^            | 0.4%                         | -4.6%                     | -4.9%   | -5.4%  | -4.4%  | -4.6%  | -13.6%                    | 1.2%   |
| AMH                    | AMCIL                            | Large/Medium       | \$349           | \$1.10           | \$1.22              | -9.9%                        | -13.5%                    | -12.5%  | -12.8% | -7.2%  | -6.3%  | -15.3%                    | 7.1%   |
| CAM                    | Clime Capital                    | Large/Medium       | \$114           | \$0.76           | \$0.76 *            | -0.4%                        | 2.2%                      | 1.3%    | 0.1%   | -0.5%  | -0.7%  | -8.8%                     | 6.5%   |
| FSI                    | Flagship Investments             | Large/Medium       | \$53            | \$2.05           | \$2.55 #            | -19.4%                       | -21.0%                    | -23.5%  | -24.3% | -19.0% | -15.7% | -28.7%                    | 0.2%   |
| WAM                    | WAM Capital                      | Medium/Small       | \$1,825         | \$1.63           | \$1.56 #            | 4.5%                         | 1.3%                      | 2.7%    | 2.8%   | 12.2%  | 16.4%  | -3.8%                     | 33.6%  |
| OPH                    | Ophir High Conviction Fund       | Medium/Small       | \$650           | \$2.92           | \$3.27 *            | -10.6%                       | -10.9%                    | -11.6%  | -11.9% | -7.2%  | -3.0%  | -15.8%                    | 14.4%  |
| MIR                    | Mirabooka Investments            | Medium/Small       | \$633           | \$3.25           | \$3.25              | 0.1%                         | -2.6%                     | -0.5%   | 0.6%   | 2.7%   | 3.0%   | -5.8%                     | 15.9%  |
| WAX                    | WAM Research                     | Medium/Small       | \$253           | \$1.23           | \$1.17 #            | 5.5%                         | 0.5%                      | 2.4%    | 4.0%   | 17.6%  | 24.9%  | -1.8%                     | 52.6%  |
| CDM                    | Cadence Capital                  | Medium/Small       | \$197           | \$0.66           | \$0.98 #            | -32.5%                       | -12.1%                    | -11.7%  | -12.7% | -9.4%  | -10.6% | -25.9%                    | 5.0%   |
| TOP                    | Thorney Opportunities            | Medium/Small       | \$108           | \$0.61           | \$0.91              | -33.5%                       | -30.0%                    | -30.7%  | -30.9% | -30.2% | -26.9% | -37.4%                    | -16.5% |
| RYD                    | Ryder Capital                    | Medium/Small       | \$98            | \$1.21           | \$1.47 #            | -17.9%                       | -15.3%                    | -17.6%  | -16.9% | -14.1% | -13.1% | -22.9%                    | -4.8%  |
| TEK                    | Thorney Technologies             | Medium/Small       | \$45            | \$0.12           | \$0.26 #            | -53.5%                       | -47.5%                    | -45.7%  | -43.8% | -36.0% | -28.4% | -49.6%                    | -0.8%  |
| WAA                    | WAM Active                       | Medium/Small       | \$66            | \$0.87           | \$0.93 #            | -6.6%                        | -11.1%                    | -8.0%   | -7.6%  | -6.9%  | -3.2%  | -19.8%                    | 13.8%  |
| ECP                    | ECP Emerging Growth              | Medium/Small       | \$24            | \$1.31           | \$1.71 #            | -23.9%                       | -19.4%                    | -19.9%  | -23.1% | -21.1% | -19.5% | -32.4%                    | -4.5%  |
| NAC                    | Naos Ex-50 Opportunities         | Medium/Small       | \$18            | \$0.37           | \$0.45 #            | -16.9%                       | -5.7%                     | 0.1%    | -1.0%  | -6.3%  | -10.8% | -28.9%                    | 10.0%  |
| WMI                    | WAM Microcap                     | Small/Micro        | \$425           | \$1.53           | \$1.44 #            | 6.3%                         | 2.8%                      | 4.5%    | 5.2%   | 13.2%  | 13.6%  | -7.0%                     | 31.7%  |
| SEC                    | Spheria Emerging Companies       | Small/Micro        | \$141           | \$2.36           | \$2.47 ^            | -4.6%                        | -6.1%                     | -5.5%   | -5.2%  | -9.4%  | -11.4% | -25.5%                    | -0.5%  |
| NSC                    | Naos Small Cap Opportunities     | Small/Micro        | \$40            | \$0.30           | \$0.53 #            | -43.1%                       | -20.9%                    | -19.1%  | -16.3% | -15.0% | -15.8% | -37.5%                    | -4.7%  |
| NCC                    | Naos Emerging Opportunities      | Small/Micro        | \$27            | \$0.37           | \$0.51 #            | -28.4%                       | -24.8%                    | -22.1%  | -13.5% | -13.0% | -11.3% | -31.7%                    | 4.1%   |
| ACQ                    | Acom Capital Investment          | Small/Micro        | \$68            | \$0.77           | \$1.05 #            | -27.2%                       | -22.0%                    | -22.6%  | -20.7% | -10.6% | -9.0%  | -25.1%                    | 8.2%   |
| DJW                    | Djerriwarrh Investments          | Income             | \$806           | \$3.05           | \$3.24              | -5.8%                        | -5.8%                     | -6.8%   | -9.0%  | -7.8%  | -6.2%  | -12.4%                    | 4.7%   |
| PL8                    | Plato Income Maximiser           | Income             | \$962           | \$1.29           | \$1.12 *            | 15.1%                        | 9.5%                      | 9.5%    | 10.1%  | 13.4%  | 11.8%  | 2.2%                      | 22.1%  |
| WHI                    | Whitefield Income                | Income             | \$207           | \$1.29           | \$1.24 #            | 4.0%                         | n/a                       | n/a     | n/a    | n/a    | n/a    | 3.3%                      | 5.6%   |
| SNC                    | Sandon Capital Investments       | Activist           | \$110           | \$0.76           | \$0.90 #            | -15.7%                       | -14.7%                    | -15.1%  | -14.4% | -13.4% | -14.3% | -28.1%                    | -7.1%  |
| WAR                    | WAM Strategic Value              | Disc Capture       | \$203           | \$1.13           | \$1.27 #            | -11.7%                       | -12.4%                    | -11.3%  | -12.5% | -12.2% | n/a    | -16.9%                    | 0.6%   |
| FGX                    | Future Generation Investment     | Fund of Funds      | \$509           | \$1.25           | \$1.45 #            | -14.3%                       | -8.9%                     | -9.9%   | -11.7% | -10.8% | -10.1% | -17.3%                    | -2.8%  |

\*The Indicative NTA has been adjusted for dividends. Dividends are removed from the NTA once the security goes ex-date and until the receipt of the new cum-dividend NTA. #The Indicative NTA is the actual reported monthly pre-tax/post-tax NTA as we have been unable to calculate the Indicative NTA within a reasonable level of accuracy. \*The Indicative NTA is the actual reported weekly pre-tax/post-tax NTA as we have been unable to calculate the Indicative NTA within a reasonable level of accuracy. ^The Indicative NTA is the actual reported daily pre-tax/post-tax NTA as we have been unable to calculate the Indicative NTA within a reasonable level of accuracy. +Prem/Disc does not adjust for the dilution of unexercised options.

# LISTED INVESTMENT COMPANIES INDICATIVE NTA.

## BELL POTTER

Bell Potter's Indicative NTA tracks the 'indicative' movement of a LIC's underlying NTA each month by monitoring the percentage movements of the disclosed holdings, and using an index to track the movement of the remaining positions. We have also included an adjusted indicative NTA and adjusted discount, where applicable, which removes the LIC distribution from the ex-dividend date until the receipt of the new NTA post the payment date.

| ASX Code                    | Company/Trust Name                  | Investment Mandate       | Market Cap. (M) | Share/Unit Price | Indicative NTA/NAV" | Indicative Premium/Discount" | Average Premium/Discount+ |         |        |        |        | Prem/Disc Range (5 Year)+ |       |
|-----------------------------|-------------------------------------|--------------------------|-----------------|------------------|---------------------|------------------------------|---------------------------|---------|--------|--------|--------|---------------------------|-------|
|                             |                                     |                          |                 |                  |                     |                              | 3 Month                   | 6 Month | 1 Year | 3 Year | 5 Year | Low                       | High  |
| <b>International Equity</b> |                                     |                          |                 |                  |                     |                              |                           |         |        |        |        |                           |       |
| MFF                         | MFF Capital Investments             | Global                   | \$2,546         | \$4.37           | \$4.96 *            | -11.9%                       | -10.4%                    | -11.4%  | -12.8% | -15.3% | -13.0% | -21.7%                    | 1.4%  |
| WGB                         | WAM Global                          | Global                   | \$858           | \$2.41           | \$2.63 #            | -8.4%                        | -14.6%                    | -12.1%  | -10.2% | -12.2% | -10.3% | -25.9%                    | 5.9%  |
| PMC                         | Platinum Capital                    | Global                   | \$425           | \$1.44           | \$1.53 *            | -6.3%                        | -7.0%                     | -6.7%   | -8.0%  | -11.5% | -10.1% | -19.0%                    | -5.1% |
| PGF                         | PM Capital Global Opportunities     | Global                   | \$1,154         | \$2.41           | \$2.38 *            | 1.3%                         | 4.9%                      | 5.2%    | 3.5%   | 1.2%   | -4.8%  | -22.2%                    | 8.2%  |
| PIA                         | Pengana International Equities      | Global                   | \$308           | \$1.20           | \$1.42 *            | -15.5%                       | -15.7%                    | -14.9%  | -15.3% | -14.9% | -13.1% | -24.7%                    | -2.8% |
| WQG                         | WCM Global Growth                   | Global                   | \$375           | \$1.66           | \$1.77 *            | -6.4%                        | -4.7%                     | -2.0%   | -2.6%  | -7.2%  | -4.7%  | -21.4%                    | -2.3% |
| ALI                         | Argo Global Listed Infrastructure   | Global (Infrastructure)  | \$407           | \$2.29           | \$2.66 *            | -13.9%                       | -10.7%                    | -9.0%   | -10.9% | -5.6%  | -5.0%  | -20.9%                    | 7.3%  |
| LRT                         | Lowell Resources Fund               | Global (Jnr Resources)   | \$42            | \$1.03           | \$1.34              | -23.5%                       | -16.0%                    | -15.6%  | -12.9% | -13.2% | -13.9% | -22.8%                    | 1.3%  |
| GVF                         | Global Value Fund                   | Global (Disc Capture)    | \$237           | \$1.36           | \$1.37 #            | -1.2%                        | -2.1%                     | -3.5%   | -5.6%  | -5.1%  | -4.8%  | -15.1%                    | 3.2%  |
| FGG                         | Future Generation Global Investment | Global (Fund of Funds)   | \$583           | \$1.46           | \$1.70 #            | -14.0%                       | -15.2%                    | -14.1%  | -15.3% | -15.0% | -14.4% | -22.9%                    | -3.0% |
| HM1                         | Hearts and Minds Investments        | Global (High Conviction) | \$696           | \$3.04           | \$3.62 *            | -16.0%                       | -16.6%                    | -14.9%  | -16.3% | -16.2% | -9.2%  | -22.1%                    | 18.8% |
| PAI                         | Platinum Asia Investments           | Asia                     | \$400           | \$1.08           | \$1.12 *            | -3.1%                        | -6.9%                     | -6.2%   | -8.7%  | -12.3% | -9.8%  | -18.6%                    | -0.1% |
| RG8                         | Regal Asian Investments             | Asia                     | \$306           | \$2.02           | \$2.30 *            | -12.2%                       | -11.6%                    | -11.5%  | -13.0% | -14.1% | -15.6% | -25.8%                    | -8.2% |
| <b>Alternatives</b>         |                                     |                          |                 |                  |                     |                              |                           |         |        |        |        |                           |       |
| LSF                         | L1 Long Short Fund                  | Long/Short (Global)      | \$1,670         | \$2.67           | \$2.88 ^            | -7.3%                        | 0.3%                      | 1.6%    | -0.1%  | -3.0%  | -6.8%  | -29.4%                    | 1.0%  |
| VG1                         | VGI Partners Global Investments     | Long/Short (Global)      | \$442           | \$1.75           | \$2.01 *            | -13.2%                       | -10.2%                    | -9.1%   | -11.6% | -15.3% | -14.9% | -22.5%                    | -5.1% |
| RF1                         | Regal Investment Fund               | Long/Short (Global)      | \$668           | \$3.08           | \$3.25 *            | -5.2%                        | -3.4%                     | -1.4%   | -3.4%  | -2.7%  | -1.2%  | -27.1%                    | 36.0% |
| TGF                         | Tribeca Global Natural Resources    | Long/Short (Resources)   | \$115           | \$1.46           | \$2.00 *            | -27.0%                       | -23.6%                    | -20.1%  | -21.0% | -17.2% | -17.9% | -48.1%                    | -7.1% |
| WMA                         | WAM Alternative Assets              | Private Assets           | \$192           | \$0.98           | \$1.20 #            | -18.2%                       | -15.2%                    | -14.6%  | -16.2% | -13.7% | n/a    | -19.0%                    | -8.0% |
| D2O                         | Duxton Water                        | Water Entitlements       | \$210           | \$1.34           | \$1.66 #            | -19.3%                       | -11.8%                    | -11.3%  | -10.0% | -9.7%  | -12.4% | -22.6%                    | 4.3%  |
| PE1                         | Pengana Private Equity Trust        | Private Equity (Global)  | \$340           | \$1.23           | \$1.66 #            | -26.0%                       | -22.7%                    | -20.6%  | -16.5% | -9.5%  | -5.2%  | -27.0%                    | 30.9% |
| BTI                         | Bailador Technology Investments     | Private Equity (Tech)    | \$169           | \$1.15           | \$1.71              | -33.2%                       | -33.1%                    | -31.8%  | -31.0% | -28.6% | -24.7% | -47.2%                    | 13.7% |
| <b>Fixed Interest</b>       |                                     |                          |                 |                  |                     |                              |                           |         |        |        |        |                           |       |
| GCI                         | Gryphon Capital Income Trust        | ABS & RMBS               | \$851           | \$2.03           | \$2.02 ^            | 0.7%                         | 1.5%                      | 1.5%    | 1.3%   | -0.1%  | -1.3%  | -17.2%                    | 2.8%  |
| DN1                         | Dominion Income Trust 1             | ABS & RMBS               | \$308           | \$102.50         | \$100.00 ^          | 2.5%                         | n/a                       | n/a     | n/a    | n/a    | n/a    | 0.0%                      | 0.0%  |
| QRI                         | Qualitas Real Estate Income Fund    | CRE                      | \$824           | \$1.62           | \$1.60 *            | 1.1%                         | 3.7%                      | 2.8%    | 2.0%   | -2.8%  | -2.8%  | -18.8%                    | 4.6%  |
| MRE                         | Metrics Real Estate Fund            | Blended CRE              | \$288           | \$1.90           | \$2.04 #            | -7.0%                        | -3.3%                     | n/a     | n/a    | n/a    | n/a    | -4.8%                     | -0.5% |
| MXT                         | Metrics Master Income Trust         | Diversified Loans        | \$2,201         | \$2.07           | \$2.00 ^            | 3.3%                         | 3.8%                      | 3.4%    | 3.2%   | 0.6%   | 0.1%   | -15.5%                    | 5.4%  |
| MOT                         | Metrics Income Opportunities Trust  | Private Credit           | \$685           | \$2.06           | \$2.14 ^            | -3.9%                        | -1.7%                     | 0.0%    | 1.5%   | -1.3%  | -2.6%  | -26.4%                    | 5.1%  |
| MA1                         | MA Credit Income Trust              | Private Credit           | \$331           | \$2.00           | \$2.00 ^            | -0.2%                        | n/a                       | n/a     | n/a    | n/a    | n/a    | 0.0%                      | 0.0%  |
| PCI                         | Perpetual Credit Income Trust       | Domestic & Global Credit | \$564           | \$1.16           | \$1.10 ^            | 5.3%                         | 6.6%                      | 5.0%    | 2.9%   | -4.0%  | -4.6%  | -14.5%                    | 7.7%  |
| KKC                         | KKR Credit Income Fund              | Global Credit            | \$758           | \$2.35           | \$2.45 ^            | -4.0%                        | -4.8%                     | -5.3%   | -6.1%  | -11.9% | -12.1% | -22.2%                    | -3.7% |
| PCX                         | Pengana Global Private Credit Trust | Global Private Credit    | \$169           | \$2.00           | \$1.99 #            | 0.6%                         | 1.2%                      | 1.5%    | n/a    | n/a    | n/a    | 0.8%                      | 2.5%  |

\*The Indicative NTA has been adjusted for dividends. Dividends are removed from the NTA once the security goes ex-date and until the receipt of the new cum-dividend NTA. #The Indicative NTA is the actual reported monthly pre-tax/post-tax NTA as we have been unable to calculate the Indicative NTA within a reasonable level of accuracy. \*The Indicative NTA is the actual reported weekly pre-tax/post-tax NTA as we have been unable to calculate the Indicative NTA within a reasonable level of accuracy. ^The Indicative NTA is the actual reported daily pre-tax/post-tax NTA as we have been unable to calculate the Indicative NTA within a reasonable level of accuracy. +Prem/Disc does not adjust for the dilution of unexercised options.

# LISTED INVESTMENT COMPANIES INDICATIVE NTA.

## BELL POTTER

We have enclosed a reference page for dividends. We have used historical dividend data for the dividend information, and manager guidance where appropriate. Please note that historical dividends are no guarantee of future dividends to be paid.

| ASX Code               | Company/Trust Name               | Investment Mandate | Share/Unit Price | Market Cap. (M) | Dividend LTM* | Franking # | Franking Credits | Gross Dividend | Yearly Freq. | Net Yield* | Gross Yield* | Recent Declared Dividend/Distribution |           |           |
|------------------------|----------------------------------|--------------------|------------------|-----------------|---------------|------------|------------------|----------------|--------------|------------|--------------|---------------------------------------|-----------|-----------|
|                        |                                  |                    |                  |                 |               |            |                  |                |              |            |              | Amount                                | Ex-Date   | Pay-Date  |
| <b>Domestic Equity</b> |                                  |                    |                  |                 |               |            |                  |                |              |            |              |                                       |           |           |
| AFI                    | Australian Foundation Investment | Large              | \$7.24           | \$9,110         | \$0.265       | 100.0%     | \$0.114          | \$0.379        | H            | 3.7%       | 5.2%         | \$0.1200                              | 03-Feb-25 | 25-Feb-25 |
| ARG                    | Argo Investments                 | Large              | \$8.83           | \$6,740         | \$0.350       | 100.0%     | \$0.150          | \$0.500        | H            | 4.0%       | 5.7%         | \$0.1700                              | 07-Feb-25 | 14-Mar-25 |
| AUI                    | Australian United Investment     | Large              | \$10.18          | \$1,263         | \$0.370       | 100.0%     | \$0.159          | \$0.529        | H            | 3.6%       | 5.2%         | \$0.1700                              | 28-Feb-25 | 21-Mar-25 |
| BKI                    | BKI Investment                   | Large/Medium       | \$1.68           | \$1,356         | \$0.079       | 100.0%     | \$0.034          | \$0.113        | H            | 4.7%       | 6.7%         | \$0.0390                              | 03-Feb-25 | 28-Feb-25 |
| DUI                    | Diversified United Investment    | Large/Medium       | \$5.12           | \$1,102         | \$0.160       | 100.0%     | \$0.069          | \$0.229        | H            | 3.1%       | 4.5%         | \$0.0700                              | 28-Feb-25 | 21-Mar-25 |
| CIN                    | Carlton Investments              | Large/Medium       | \$30.28          | \$800           | \$1.080       | 100.0%     | \$0.463          | \$1.543        | H            | 3.6%       | 5.1%         | \$0.4500                              | 28-Feb-25 | 24-Mar-25 |
| WLE                    | WAM Leaders                      | Large/Medium       | \$1.28           | \$1,753         | \$0.092       | 100.0%     | \$0.039          | \$0.131        | H            | 7.2%       | 10.3%        | \$0.0470                              | 11-Apr-25 | 29-Apr-25 |
| WHF                    | Whitefield Industrials           | Large/Medium       | \$5.28           | \$634           | \$0.208       | 100.0%     | \$0.089          | \$0.296        | H            | 3.9%       | 5.6%         | n/a                                   | n/a       | n/a       |
| PIC                    | Perpetual Equity Investment      | Large/Medium       | \$1.24           | \$472           | \$0.080       | 100.0%     | \$0.034          | \$0.114        | H            | 6.5%       | 9.3%         | \$0.0400                              | 12-Mar-25 | 04-Apr-25 |
| AMH                    | AMCIL                            | Large/Medium       | \$1.10           | \$349           | \$0.035       | 100.0%     | \$0.015          | \$0.050        | H            | 3.2%       | 4.5%         | \$0.0100                              | 04-Feb-25 | 26-Feb-25 |
| CAM                    | Clime Capital                    | Large/Medium       | \$0.76           | \$114           | \$0.054       | 100.0%     | \$0.023          | \$0.077        | Q            | 7.1%       | 10.2%        | \$0.0135                              | 03-Apr-25 | 24-Apr-25 |
| FSI                    | Flagship Investments             | Large/Medium       | \$2.05           | \$53            | \$0.103       | 100.0%     | \$0.044          | \$0.147        | H            | 5.0%       | 7.2%         | \$0.0510                              | 12-Feb-25 | 27-Feb-25 |
| WAM                    | WAM Capital                      | Medium/Small       | \$1.63           | \$1,825         | \$0.155       | 60.0%      | \$0.040          | \$0.195        | H            | 9.5%       | 12.0%        | \$0.0775                              | 16-Apr-25 | 30-Apr-25 |
| OPH                    | Ophir High Conviction Fund       | Medium/Small       | \$2.92           | \$650           | \$0.075       | 0.0%       | \$0.000          | \$0.075        | Y            | 2.6%       | 2.6%         | n/a                                   | n/a       | n/a       |
| MIR                    | Mirrabooka Investments           | Medium/Small       | \$3.25           | \$633           | \$0.110       | 100.0%     | \$0.047          | \$0.157        | H            | 3.4%       | 4.8%         | n/a                                   | n/a       | n/a       |
| WAX                    | WAM Research                     | Medium/Small       | \$1.23           | \$253           | \$0.100       | 60.0%      | \$0.026          | \$0.126        | H            | 8.1%       | 10.2%        | \$0.0500                              | 15-Apr-25 | 30-Apr-25 |
| CDM                    | Cadence Capital                  | Medium/Small       | \$0.66           | \$197           | \$0.060       | 100.0%     | \$0.026          | \$0.086        | H            | 9.1%       | 13.0%        | \$0.0300                              | 10-Apr-25 | 30-Apr-25 |
| TOP                    | Thorney Opportunities            | Medium/Small       | \$0.61           | \$108           | \$0.026       | 100.0%     | \$0.011          | \$0.036        | H            | 4.2%       | 6.0%         | \$0.0110                              | 13-Mar-25 | 31-Mar-25 |
| RYD                    | Ryder Capital                    | Medium/Small       | \$1.21           | \$98            | \$0.095       | 100.0%     | \$0.041          | \$0.136        | H            | 7.9%       | 11.3%        | \$0.0450                              | 24-Feb-25 | 19-Mar-25 |
| TEK                    | Thorney Technologies             | Medium/Small       | \$0.12           | \$45            | \$0.000       | n/a        | \$0.000          | \$0.000        | n/a          | 0.0%       | 0.0%         | n/a                                   | n/a       | n/a       |
| WAA                    | WAM Active                       | Medium/Small       | \$0.87           | \$66            | \$0.060       | 100.0%     | \$0.026          | \$0.086        | H            | 6.9%       | 9.9%         | \$0.0300                              | 14-Apr-25 | 30-Apr-25 |
| ECP                    | ECP Emerging Growth              | Medium/Small       | \$1.31           | \$24            | \$0.055       | 100.0%     | \$0.024          | \$0.079        | H            | 4.2%       | 6.0%         | \$0.0240                              | 26-Feb-25 | 13-Mar-25 |
| NAC                    | Naos Ex-50 Opportunities         | Medium/Small       | \$0.37           | \$18            | \$0.060       | 100.0%     | \$0.026          | \$0.086        | Q            | 16.2%      | 23.2%        | \$0.0150                              | 10-Mar-25 | 04-Apr-25 |
| WMI                    | WAM Microcap                     | Small/Micro        | \$1.53           | \$425           | \$0.105       | 100.0%     | \$0.045          | \$0.150        | H            | 6.9%       | 9.8%         | \$0.0530                              | 14-Apr-25 | 30-Apr-25 |
| SEC                    | Spheria Emerging Companies       | Small/Micro        | \$2.36           | \$141           | \$0.134       | 100.0%     | \$0.057          | \$0.191        | Q            | 5.7%       | 8.1%         | n/a                                   | n/a       | n/a       |
| NSC                    | Naos Small Cap Opportunities     | Small/Micro        | \$0.30           | \$40            | \$0.050       | 100.0%     | \$0.021          | \$0.071        | Q            | 16.7%      | 23.8%        | \$0.0125                              | 10-Mar-25 | 04-Apr-25 |
| NCC                    | Naos Emerging Opportunities      | Small/Micro        | \$0.37           | \$27            | \$0.058       | 67.4%      | \$0.017          | \$0.074        | H            | 15.8%      | 20.3%        | \$0.0200                              | 24-Mar-25 | 24-Apr-25 |
| ACQ                    | Acom Capital Investment          | Small/Micro        | \$0.77           | \$68            | \$0.055       | 75.0%      | \$0.018          | \$0.073        | H            | 7.2%       | 9.5%         | \$0.0275                              | 05-May-25 | 26-May-25 |
| DJW                    | Djerriwarr Investments           | Income             | \$3.05           | \$806           | \$0.153       | 100.0%     | \$0.065          | \$0.218        | H            | 5.0%       | 7.1%         | \$0.0725                              | 30-Jan-25 | 24-Feb-25 |
| PL8                    | Plato Income Maximiser           | Income             | \$1.29           | \$962           | \$0.066       | 100.0%     | \$0.028          | \$0.094        | M            | 5.1%       | 7.3%         | \$0.0055                              | 13-Feb-25 | 28-Feb-25 |
| WHI                    | Whitefield Income                | Income             | \$1.29           | \$207           | \$0.000       | -          | \$0.000          | \$0.000        | n/a          | 0.0%       | 0.0%         | n/a                                   | n/a       | n/a       |
| SNC                    | Sandon Capital Investments       | Activist           | \$0.76           | \$110           | \$0.042       | 100.0%     | \$0.018          | \$0.059        | H            | 5.5%       | 7.8%         | \$0.0140                              | 18-Feb-25 | 07-Mar-25 |
| WAR                    | WAM Strategic Value              | Disc Capture       | \$1.13           | \$203           | \$0.053       | 100.0%     | \$0.023          | \$0.075        | H            | 4.7%       | 6.7%         | \$0.0300                              | 01-May-25 | 29-May-25 |
| FGX                    | Future Generation Investment     | Fund of Funds      | \$1.25           | \$509           | \$0.069       | 100.0%     | \$0.029          | \$0.098        | H            | 5.5%       | 7.9%         | n/a                                   | n/a       | n/a       |

\*LTM Dividend is the sum of dividends paid over the last 12 months, excluding any special dividends paid. #Franking assumes a tax rate of 30%, actual company tax rate applied may differ.

# LISTED INVESTMENT COMPANIES **INDICATIVE NTA.**

## BELL POTTER

We have enclosed a reference page for dividends. We have used historical dividend data for the dividend information, and manager guidance where appropriate. Please note that historical dividends are no guarantee of future dividends to be paid.

| ASX Code                    | Company/Trust Name                  | Investment Mandate       | Share/Unit Price | Market Cap. (M) | Dividend LTM* | Franking # | Franking Credits | Gross Dividend | Yearly Freq. | Net Yield* | Gross Yield* | Recent Declared Dividend/Distribution Amount | Ex-Date   | Pay-Date  |
|-----------------------------|-------------------------------------|--------------------------|------------------|-----------------|---------------|------------|------------------|----------------|--------------|------------|--------------|--|-----------|-----------|
| <b>International Equity</b> |                                     |                          |                  |                 |               |            |                  |                |              |            |              |  |           |           |
| MFF                         | MFF Capital Investments             | Global                   | \$4.37           | \$2,546         | \$0.130       | 100.0%     | \$0.056          | \$0.186        | H            | 3.0%       | 4.2%         | \$0.0800                                     | 22-Apr-25 | 14-May-25 |
| WGB                         | WAM Global                          | Global                   | \$2.41           | \$858           | \$0.240       | 100.0%     | \$0.103          | \$0.343        | Q            | 10.0%      | 14.2%        | \$0.0650                                     | 19-May-25 | 30-May-25 |
| PMC                         | Platinum Capital                    | Global                   | \$1.44           | \$425           | \$0.060       | 100.0%     | \$0.026          | \$0.086        | H            | 4.2%       | 6.0%         | \$0.0300                                     | 06-Mar-25 | 21-Mar-25 |
| PGF                         | PM Capital Global Opportunities     | Global                   | \$2.41           | \$1,154         | \$0.105       | 100.0%     | \$0.045          | \$0.150        | H            | 4.4%       | 6.2%         | \$0.0550                                     | 13-Mar-25 | 14-Apr-25 |
| PIA                         | Pengana International Equities      | Global                   | \$1.20           | \$308           | \$0.054       | 100.0%     | \$0.023          | \$0.077        | Q            | 4.5%       | 6.4%         | \$0.0135                                     | 28-Feb-25 | 17-Mar-25 |
| WQG                         | WCM Global Growth                   | Global                   | \$1.66           | \$375           | \$0.071       | 100.0%     | \$0.030          | \$0.101        | Q            | 4.3%       | 6.1%         | \$0.0187                                     | 12-Mar-25 | 31-Mar-25 |
| ALI                         | Argo Global Listed Infrastructure   | Global (Infrastructure)  | \$2.29           | \$407           | \$0.090       | 100.0%     | \$0.039          | \$0.129        | H            | 3.9%       | 5.6%         | \$0.0400                                     | 07-Mar-25 | 28-Mar-25 |
| LRT                         | Lowell Resources Fund               | Global (Jnr Resources)   | \$1.03           | \$42            | \$0.152       | 0.4%       | \$0.000          | \$0.152        | Y            | 14.8%      | 14.9%        | n/a  | n/a       | n/a       |
| GVF                         | Global Value Fund                   | Global (Disc Capture)    | \$1.36           | \$237           | \$0.066       | 100.0%     | \$0.028          | \$0.094        | H            | 4.9%       | 7.0%         | \$0.0330                                     | 31-Mar-25 | 15-May-25 |
| FGG                         | Future Generation Global Investment | Global (Fund of Funds)   | \$1.46           | \$583           | \$0.073       | 100.0%     | \$0.031          | \$0.104        | H            | 5.0%       | 7.1%         | \$0.0370                                     | 12-May-25 | 23-May-25 |
| HM1                         | Hearts and Minds Investments        | Global (High Conviction) | \$3.04           | \$696           | \$0.155       | 100.0%     | \$0.066          | \$0.221        | H            | 5.1%       | 7.3%         | \$0.0800                                     | 26-Feb-25 | 17-Apr-25 |
| PAI                         | Platinum Asia Investments           | Asia                     | \$1.08           | \$400           | \$0.025       | 100.0%     | \$0.011          | \$0.036        | H            | 2.3%       | 3.3%         | \$0.0050                                     | 06-Mar-25 | 21-Mar-25 |
| RG8                         | Regal Asian Investments             | Asia                     | \$2.02           | \$306           | \$0.110       | 100.0%     | \$0.047          | \$0.157        | H            | 5.4%       | 7.8%         | \$0.0600                                     | 20-Feb-25 | 24-Mar-25 |
| <b>Alternatives</b>         |                                     |                          |                  |                 |               |            |                  |                |              |            |              |  |           |           |
| LSF                         | L1 Long Short Fund                  | Long/Short (Global)      | \$2.67           | \$1,670         | \$0.118       | 100.0%     | \$0.050          | \$0.168        | H            | 4.4%       | 6.3%         | n/a  | n/a       | n/a       |
| VG1                         | VGI Partners Global Investments     | Long/Short (Global)      | \$1.75           | \$442           | \$0.110       | 100.0%     | \$0.047          | \$0.157        | H            | 6.3%       | 9.0%         | \$0.0600                                     | 19-Feb-25 | 24-Mar-25 |
| RF1                         | Regal Investment Fund               | Long/Short (Global)      | \$3.08           | \$668           | \$0.251       | 0.0%       | \$0.000          | \$0.251        | H            | 8.1%       | 8.1%         | \$0.1000                                     | 31-Dec-24 | 07-Mar-25 |
| TGF                         | Tribeca Global Natural Resources    | Long/Short (Global)      | \$1.46           | \$115           | \$0.000       | -          | \$0.000          | \$0.000        | n/a          | 0.0%       | 0.0%         | n/a  | n/a       | n/a       |
| WMA                         | WAM Alternative Assets              | Private Assets           | \$0.98           | \$192           | \$0.052       | 100.0%     | \$0.022          | \$0.074        | H            | 5.3%       | 7.6%         | \$0.0270                                     | 15-May-25 | 28-May-25 |
| D20                         | Duxton Water                        | Water Entitlements       | \$1.34           | \$210           | \$0.073       | 100.0%     | \$0.031          | \$0.104        | H            | 5.4%       | 7.8%         | \$0.0371                                     | 07-Apr-25 | 24-Apr-25 |
| PE1                         | Pengana Private Equity Trust        | Private Equity (Global)  | \$1.23           | \$340           | \$0.063       | 0.0%       | \$0.000          | \$0.063        | H            | 5.2%       | 5.2%         | n/a  | n/a       | n/a       |
| BTI                         | Bailador Technology Investments     | Private Equity (Tech)    | \$1.15           | \$169           | \$0.071       | 100.0%     | \$0.030          | \$0.101        | H            | 6.2%       | 8.9%         | \$0.0370                                     | 25-Feb-25 | 14-Mar-25 |
| <b>Fixed Interest</b>       |                                     |                          |                  |                 |               |            |                  |                |              |            |              |  |           |           |
| GCI                         | Gryphon Capital Income Trust        | ABS & RMBS               | \$2.03           | \$851           | \$0.169       | 0.0%       | \$0.000          | \$0.169        | M            | 8.3%       | 8.3%         | \$0.0127                                     | 27-Feb-25 | 10-Mar-25 |
| DN1                         | Dominion Income Trust 1             | ABS & RMBS               | \$102.50         | \$308           | \$0.000       | -          | \$0.000          | \$0.000        | n/a          | 0.0%       | 0.0%         | n/a  | n/a       | n/a       |
| QRI                         | Qualitas Real Estate Income Fund    | CRE                      | \$1.62           | \$824           | \$0.138       | 0.0%       | \$0.000          | \$0.138        | M            | 8.5%       | 8.5%         | \$0.0112                                     | 05-Feb-25 | 17-Feb-25 |
| MRE                         | Metrics Real Estate Fund            | Blended CRE              | \$1.90           | \$288           | \$0.043       | 0.0%       | \$0.000          | \$0.043        | M            | 5.4%       | 5.4%         | \$0.0080                                     | 28-Feb-25 | 10-Mar-25 |
| MXT                         | Metrics Master Income Trust         | Diversified Loans        | \$2.07           | \$2,201         | \$0.160       | 0.0%       | \$0.000          | \$0.160        | M            | 7.7%       | 7.7%         | \$0.0120                                     | 28-Feb-25 | 10-Mar-25 |
| MOT                         | Metrics Income Opportunities Trust  | Private Credit           | \$2.06           | \$685           | \$0.163       | 0.0%       | \$0.000          | \$0.163        | M            | 7.9%       | 7.9%         | \$0.0126                                     | 28-Feb-25 | 10-Mar-25 |
| MA1                         | MA Credit Income Trust              | Private Credit           | \$2.00           | \$331           | \$0.000       | -          | \$0.000          | \$0.000        | n/a          | 0.0%       | 0.0%         | n/a  | n/a       | n/a       |
| PCI                         | Perpetual Credit Income Trust       | Domestic & Global Credit | \$1.16           | \$564           | \$0.089       | 0.0%       | \$0.000          | \$0.089        | M            | 7.7%       | 7.7%         | \$0.0066                                     | 27-Feb-25 | 10-Mar-25 |
| KKC                         | KKR Credit Income Fund              | Global Credit            | \$2.35           | \$758           | \$0.200       | 0.0%       | \$0.000          | \$0.200        | M            | 8.5%       | 8.5%         | \$0.0167                                     | 27-Feb-25 | 14-Mar-25 |
| PCX                         | Pengana Global Private Credit Trust | Global Private Credit    | \$2.00           | \$169           | \$0.081       | 0.0%       | \$0.000          | \$0.081        | M            | 7.0%       | 7.0%         | \$0.0116                                     | 03-Mar-25 | 18-Mar-25 |

\*LTM Dividend is the sum of dividends paid over the last 12 months, excluding any special dividends paid. #Franking assumes a tax rate of 30%, actual company tax rate applied may differ. PCX and MRE are annualised

# LISTED INVESTMENT COMPANIES INDICATIVE NTA.

## BELL POTTER

Measurement of LIC performance is calculated after all operating expenses, provision and before the payment of taxes (after realised capital gains taxes if reported by the Company). Performance also assumes the reinvestment of net dividends, but does not incorporate franking. As at 31 December 2024

| ASX Code               | Company/Trust Name               | Investment Mandate | Performance Data (Pre-Tax NTA p.a.) |         |        |        |        |         | Performance Data (Share/Unit Price p.a.) |         |        |        |        |         |
|------------------------|----------------------------------|--------------------|-------------------------------------|---------|--------|--------|--------|---------|--|---------|--------|--------|--------|---------|
|                        |                                  |                    | 3 Month                             | 6 Month | 1 Year | 3 Year | 5 Year | 10 Year | 3 Month                                  | 6 Month | 1 Year | 3 Year | 5 Year | 10 Year |
| <b>Domestic Equity</b> |                                  |                    |                                     |         |        |        |        |         |  |         |        |        |        |         |
| AFI                    | Australian Foundation Investment | Large              | 4.7%                                | 5.1%    | 14.1%  | 9.7%   | 7.9%   | 7.8%    | 2.2%                                     | 4.3%    | 4.5%   | -0.7%  | 4.8%   | 6.1%    |
| ARG                    | Argo Investments                 | Large              | 5.0%                                | 5.0%    | 13.3%  | 9.0%   | 7.0%   | 7.3%    | 3.0%                                     | 2.4%    | 3.0%   | 0.5%   | 4.3%   | 5.1%    |
| AUI                    | Australian United Investment     | Large              | 4.6%                                | 5.6%    | 13.7%  | 12.3%  | 7.5%   | 8.1%    | -2.7%                                    | 4.6%    | 10.7%  | 7.6%   | 5.0%   | 7.3%    |
| BKI                    | BKI Investment                   | Large/Medium       | 3.8%                                | 3.2%    | 8.8%   | 9.5%   | 6.7%   | 6.1%    | 1.5%                                     | 0.9%    | 0.0%   | 6.4%   | 4.6%   | 5.2%    |
| DUI                    | Diversified United Investment    | Large/Medium       | 6.3%                                | 6.5%    | 13.7%  | 10.8%  | 7.1%   | 9.1%    | 0.6%                                     | 2.7%    | 8.1%   | 5.1%   | 3.7%   | 8.0%    |
| CIN                    | Carlton Investments              | Large/Medium       | 6.3%                                | 5.5%    | 7.5%   | 6.1%   | 5.1%   | 5.4%    | 2.9%                                     | 2.1%    | 3.5%   | 3.9%   | 2.6%   | 4.2%    |
| WLE                    | WAM Leaders                      | Large/Medium       | 1.6%                                | 1.2%    | 2.8%   | 5.1%   | 6.9%   | n/a     | -5.8%                                    | 1.2%    | -2.8%  | 1.5%   | 5.6%   | n/a     |
| WHF                    | Whitefield Industrials           | Large/Medium       | 7.2%                                | 9.1%    | 22.3%  | 12.2%  | 7.3%   | 7.2%    | 1.6%                                     | 7.0%    | 12.1%  | 4.5%   | 4.8%   | 6.6%    |
| PIC                    | Perpetual Equity Investment      | Large/Medium       | 1.8%                                | 2.0%    | 6.7%   | 4.0%   | 8.2%   | 7.7%    | 5.5%                                     | 5.0%    | 13.2%  | 4.8%   | 8.9%   | 7.7%    |
| AMH                    | AMCIL                            | Large/Medium       | 5.4%                                | 6.2%    | 17.7%  | 8.3%   | 8.4%   | 8.7%    | -0.9%                                    | 3.5%    | 13.9%  | 1.8%   | 6.9%   | 7.2%    |
| CAM                    | Clime Capital                    | Large/Medium       | 0.4%                                | -3.9%   | 0.4%   | 3.3%   | 0.4%   | 3.6%    | -0.8%                                    | -1.6%   | 2.3%   | 2.3%   | 1.9%   | 4.5%    |
| FSI                    | Flagship Investments             | Large/Medium       | 4.0%                                | 8.4%    | 20.0%  | 9.4%   | 7.5%   | 8.7%    | 10.0%                                    | 17.0%   | 23.5%  | 2.1%   | 7.3%   | 8.8%    |
| WAM                    | WAM Capital                      | Medium/Small       | 0.9%                                | 7.0%    | 18.0%  | 7.2%   | 6.0%   | 7.8%    | 7.7%                                     | 11.5%   | 15.0%  | -0.3%  | 1.8%   | 5.5%    |
| OPH                    | Ophir High Conviction Fund       | Medium/Small       | 8.4%                                | 16.4%   | 28.0%  | 9.4%   | 8.2%   | n/a     | 11.8%                                    | 16.9%   | 25.1%  | 4.2%   | 7.0%   | n/a     |
| MIR                    | Mirrabooka Investments           | Medium/Small       | 6.8%                                | 8.5%    | 19.6%  | 6.6%   | 10.5%  | 10.3%   | 3.2%                                     | 2.2%    | 13.1%  | 0.4%   | 9.3%   | 8.2%    |
| WAX                    | WAM Research                     | Medium/Small       | 2.7%                                | 11.5%   | 24.6%  | 10.3%  | 8.9%   | 9.2%    | 4.0%                                     | 9.2%    | 20.7%  | -2.4%  | 3.0%   | 6.9%    |
| CDM                    | Cadence Capital                  | Medium/Small       | -2.2%                               | -2.5%   | 0.8%   | -3.1%  | 4.4%   | 1.1%    | -2.9%                                    | -0.8%   | -0.2%  | -5.0%  | 5.1%   | -0.5%   |
| TOP                    | Thorney Opportunities            | Medium/Small       | -4.0%                               | -4.9%   | 13.6%  | 12.5%  | 4.9%   | 8.9%    | 2.3%                                     | -2.8%   | 25.0%  | 12.6%  | 4.5%   | 7.6%    |
| RYD                    | Ryder Capital                    | Medium/Small       | -2.0%                               | 8.9%    | 38.3%  | 1.6%   | 3.5%   | n/a     | 1.2%                                     | 4.8%    | 35.5%  | -0.1%  | 3.7%   | n/a     |
| TEK                    | Thorney Technologies             | Medium/Small       | 2.8%                                | 5.3%    | 9.4%   | -18.0% | -5.4%  | n/a     | -8.5%                                    | 3.8%    | -12.9% | -26.9% | -13.2% | n/a     |
| WAA                    | WAM Active                       | Medium/Small       | -1.0%                               | 4.8%    | 16.1%  | 5.5%   | 4.0%   | 5.9%    | -1.2%                                    | 6.6%    | 24.9%  | -1.5%  | 2.4%   | 2.7%    |
| ECP                    | ECP Emerging Growth              | Medium/Small       | -3.2%                               | 3.0%    | 17.0%  | 8.4%   | 7.9%   | 8.6%    | -4.1%                                    | 4.7%    | 23.0%  | 3.1%   | 9.4%   | 8.9%    |
| NAC                    | Naos Ex-50 Opportunities         | Medium/Small       | 1.2%                                | -13.9%  | -34.9% | -24.2% | -12.2% | -2.6%   | -13.3%                                   | -13.4%  | -44.8% | -22.6% | -10.2% | -2.9%   |
| WMI                    | WAM Microcap                     | Small/Micro        | -0.3%                               | 8.0%    | 19.8%  | 4.3%   | 7.3%   | n/a     | 3.0%                                     | 9.7%    | 12.2%  | 1.4%   | 7.6%   | n/a     |
| SEC                    | Spheria Emerging Companies       | Small/Micro        | 5.2%                                | 9.0%    | 13.3%  | 5.2%   | 7.8%   | n/a     | 0.6%                                     | 8.7%    | 15.1%  | 6.3%   | 10.4%  | n/a     |
| NSC                    | Naos Small Cap Opportunities     | Small/Micro        | -3.0%                               | -16.9%  | -20.4% | -13.4% | -4.0%  | n/a     | -6.9%                                    | -4.4%   | -27.7% | -13.4% | -2.2%  | n/a     |
| NCC                    | Naos Emerging Opportunities      | Small/Micro        | 6.3%                                | -1.6%   | -21.7% | -17.6% | -9.1%  | -1.3%   | 0.0%                                     | -14.7%  | -31.9% | -20.5% | -10.4% | -2.4%   |
| ACQ                    | Acorn Capital Investment         | Small/Micro        | -2.1%                               | 3.0%    | 13.0%  | -4.9%  | 3.2%   | 7.8%    | -3.3%                                    | 1.4%    | -7.9%  | -11.2% | 0.9%   | 7.3%    |
| DJW                    | Djerriwarrh Investments          | Income             | 2.1%                                | 0.7%    | 6.7%   | 7.1%   | 4.6%   | 5.2%    | 0.7%                                     | 4.3%    | 10.2%  | 4.9%   | 2.4%   | 1.4%    |
| PL8                    | Plato Income Maximiser           | Income             | 4.7%                                | 6.4%    | 13.2%  | 9.8%   | 6.3%   | n/a     | 5.1%                                     | 6.9%    | 13.1%  | 8.2%   | 6.8%   | n/a     |
| WHI                    | Whitefield Income                | Income             | n/a                                 | n/a     | n/a    | n/a    | n/a    | n/a     | n/a                                      | n/a     | n/a    | n/a    | n/a    | n/a     |
| SNC                    | Sandon Capital Investments       | Activist           | -2.4%                               | 4.9%    | 16.5%  | 1.4%   | 6.0%   | 6.0%    | 5.2%                                     | 16.5%   | 19.5%  | 2.7%   | 7.4%   | 6.1%    |
| WAR                    | WAM Strategic Value              | Disc Capture       | -1.1%                               | 4.5%    | 10.7%  | 4.5%   | n/a    | n/a     | -2.2%                                    | 3.0%    | 14.3%  | 3.3%   | n/a    | n/a     |
| FGX                    | Future Generation Investment     | Fund of Funds      | 2.3%                                | 5.2%    | 10.2%  | 4.7%   | 6.2%   | 6.7%    | 2.9%                                     | 5.4%    | 19.5%  | 4.0%   | 7.1%   | 5.7%    |

# LISTED INVESTMENT COMPANIES INDICATIVE NTA.

## BELL POTTER

Measurement of LIC performance is calculated after all operating expenses, provision and before the payment of taxes (after realised capital gains taxes if reported by the Company). Performance also assumes the reinvestment of net dividends, but does not incorporate franking. As at 31 December 2024

| ASX Code                    | Company/Trust Name                  | Investment Mandate       | Performance Data (Pre-Tax NTA p.a.) |         |        |        |        |         | Performance Data (Share/Unit Price p.a.) |         |        |        |        |         |
|-----------------------------|-------------------------------------|--------------------------|-------------------------------------|---------|--------|--------|--------|---------|--|---------|--------|--------|--------|---------|
|                             |                                     |                          | 3 Month                             | 6 Month | 1 Year | 3 Year | 5 Year | 10 Year | 3 Month                                  | 6 Month | 1 Year | 3 Year | 5 Year | 10 Year |
| <b>International Equity</b> |                                     |                          |                                     |         |        |        |        |         |  |         |        |        |        |         |
| MFF                         | MFF Capital Investments             | Global                   | 18.5%                               | 27.8%   | 42.0%  | 18.4%  | 13.8%  | 14.5%   | 19.7%                                    | 25.0%   | 46.9%  | 23.2%  | 10.2%  | 13.5%   |
| WGB                         | WAM Global                          | Global                   | 6.0%                                | 8.8%    | 16.2%  | 5.4%   | 5.9%   | n/a     | 1.4%                                     | 2.3%    | 16.5%  | 5.4%   | 5.7%   | n/a     |
| PMC                         | Platinum Capital                    | Global                   | 0.7%                                | 1.4%    | 7.8%   | 1.1%   | 3.5%   | 4.2%    | -1.0%                                    | -1.7%   | 14.6%  | 3.1%   | 1.6%   | 2.4%    |
| PGF                         | PM Capital Global Opportunities     | Global                   | 4.8%                                | 5.5%    | 25.2%  | 14.9%  | 15.2%  | 10.6%   | 0.9%                                     | 3.3%    | 24.8%  | 21.6%  | 20.1%  | 12.7%   |
| PIA                         | Pengana International Equities      | Global                   | 11.4%                               | 13.9%   | 15.4%  | 6.0%   | 6.4%   | 5.7%    | 7.8%                                     | 14.6%   | 14.7%  | 2.4%   | 6.3%   | 5.1%    |
| WQG                         | WCM Global Growth                   | Global                   | 12.7%                               | 18.8%   | 33.0%  | 11.3%  | 11.8%  | n/a     | 5.3%                                     | 16.3%   | 31.1%  | 10.6%  | 12.1%  | n/a     |
| ALI                         | Argo Global Listed Infrastructure   | Global (Infrastructure)  | 1.1%                                | 5.1%    | 16.9%  | 5.8%   | 2.7%   | n/a     | 1.7%                                     | 12.2%   | 16.0%  | 4.1%   | 2.4%   | n/a     |
| LRT                         | Lowell Resources Fund               | Global (Jnr Resources)   | -5.5%                               | 7.2%    | -7.5%  | -4.4%  | 24.4%  | n/a     | -1.4%                                    | -13.1%  | -15.1% | -7.8%  | 27.7%  | n/a     |
| GVF                         | Global Value Fund                   | Global (Disc Capture)    | 1.7%                                | 5.8%    | 13.0%  | 11.7%  | 11.5%  | n/a     | 2.7%                                     | 12.0%   | 23.1%  | 10.5%  | 10.2%  | 8.1%    |
| FGG                         | Future Generation Global Investment | Global (Fund of Funds)   | 9.6%                                | 12.3%   | 19.0%  | 6.8%   | 5.6%   | n/a     | 4.0%                                     | 10.5%   | 21.9%  | 5.3%   | 6.7%   | n/a     |
| HM1                         | Hearts and Minds Investments        | Global (High Conviction) | 17.0%                               | 24.1%   | 36.6%  | 9.0%   | 8.0%   | n/a     | 8.4%                                     | 20.7%   | 28.6%  | 5.8%   | 3.7%   | n/a     |
| PAI                         | Platinum Asia Investments           | Asia                     | 0.2%                                | 12.4%   | 24.5%  | 1.9%   | 4.6%   | n/a     | -0.5%                                    | 10.0%   | 35.2%  | 2.9%   | 5.9%   | n/a     |
| RG8                         | Regal Asian Investments             | Asia                     | 2.8%                                | 8.6%    | 15.2%  | 5.9%   | 3.3%   | n/a     | -6.6%                                    | 3.4%    | 8.6%   | 6.6%   | 2.3%   | n/a     |
| <b>Alternatives</b>         |                                     |                          |                                     |         |        |        |        |         |  |         |        |        |        |         |
| LSF                         | L1 Long Short Fund                  | Long/Short (Global)      | -6.7%                               | -8.0%   | 0.0%   | 1.1%   | 14.2%  | n/a     | -8.9%                                    | -8.1%   | 1.5%   | 4.1%   | 16.7%  | n/a     |
| VG1                         | VGI Partners Global Investments     | Long/Short (Global)      | 0.5%                                | -0.4%   | 12.1%  | 3.3%   | 0.5%   | n/a     | -9.3%                                    | -1.1%   | 11.4%  | 4.3%   | 0.7%   | n/a     |
| RF1                         | Regal Investment Fund               | Long/Short (Global)      | 0.2%                                | 7.9%    | 25.8%  | 7.0%   | 18.3%  | n/a     | -5.1%                                    | 7.2%    | 34.3%  | 6.6%   | 18.4%  | n/a     |
| TGF                         | Tribeca Global Natural Resources    | Long/Short (Global)      | -3.4%                               | 1.2%    | 5.0%   | -11.1% | -0.5%  | n/a     | -12.0%                                   | -5.8%   | -5.2%  | -14.4% | -3.9%  | n/a     |
| WMA                         | WAM Alternative Assets              | Private Assets           | -1.9%                               | 1.8%    | 4.8%   | 2.5%   | n/a    | n/a     | -4.4%                                    | 2.5%    | 1.1%   | 2.7%   | n/a    | n/a     |
| D2O                         | Duxton Water                        | Water Entitlements       | 2.6%                                | 1.8%    | 0.3%   | -0.8%  | 1.4%   | n/a     | -5.4%                                    | -2.2%   | -5.9%  | 0.5%   | 2.6%   | n/a     |
| PE1                         | Pengana Private Equity Trust        | Private Equity (Global)  | 7.0%                                | 5.8%    | 9.6%   | 6.3%   | 10.4%  | n/a     | 8.9%                                     | 5.1%    | 1.8%   | -3.1%  | 4.2%   | n/a     |
| BTI                         | Bailador Technology Investments     | Private Equity (Tech)    | 1.1%                                | 6.6%    | 6.9%   | 5.2%   | 10.6%  | 7.0%    | -1.0%                                    | 7.9%    | 1.7%   | 5.7%   | 7.2%   | 5.5%    |
| <b>Fixed Interest</b>       |                                     |                          |                                     |         |        |        |        |         |  |         |        |        |        |         |
| GCI                         | Gryphon Capital Income Trust        | ABS & RMBS               | 2.0%                                | 4.8%    | 9.6%   | 8.0%   | 6.7%   | n/a     | 2.6%                                     | 5.1%    | 10.3%  | 7.8%   | 6.6%   | n/a     |
| GCI                         | Gryphon Capital Income Trust        | ABS & RMBS               | 2.0%                                | 4.8%    | 9.6%   | 8.0%   | 6.7%   | n/a     | 2.6%                                     | 5.1%    | 10.3%  | 7.8%   | 6.6%   | n/a     |
| QRI                         | Qualitas Real Estate Income Fund    | CRE                      | 1.4%                                | 3.7%    | 8.3%   | 8.0%   | 7.3%   | n/a     | 3.6%                                     | 6.8%    | 11.4%  | 9.9%   | 8.0%   | n/a     |
| MRE                         | Metrics Real Estate Fund            | Blended CRE              | 3.2%                                | n/a     | n/a    | n/a    | n/a    | n/a     | -1.1%                                    | n/a     | n/a    | n/a    | n/a    | n/a     |
| MXT                         | Metrics Master Income Trust         | Diversified Loans        | 2.0%                                | 4.0%    | 8.5%   | 8.0%   | 6.7%   | n/a     | -0.1%                                    | 1.9%    | 6.6%   | 7.8%   | 6.8%   | n/a     |
| MOT                         | Metrics Income Opportunities Trust  | Private Credit           | 1.9%                                | 3.9%    | 8.1%   | 9.1%   | 9.0%   | n/a     | -3.7%                                    | -3.6%   | 1.9%   | 6.2%   | 7.6%   | n/a     |
| MOT                         | Metrics Income Opportunities Trust  | Private Credit           | 1.9%                                | 3.9%    | 8.1%   | 9.1%   | 9.0%   | n/a     | -3.7%                                    | -3.6%   | 1.9%   | 6.2%   | 7.6%   | n/a     |
| PCI                         | Perpetual Credit Income Trust       | Domestic & Global Credit | 2.0%                                | 3.1%    | 8.6%   | 7.0%   | 5.6%   | n/a     | 4.4%                                     | 9.6%    | 18.7%  | 11.3%  | 6.8%   | n/a     |
| KKC                         | KKR Credit Income Fund              | Global Credit            | 1.9%                                | 3.6%    | 9.1%   | 6.8%   | 5.4%   | n/a     | 2.2%                                     | 3.9%    | 12.8%  | 10.0%  | 5.8%   | n/a     |
| PCX                         | Pengana Global Private Credit Trust | Global Private Credit    | 1.6%                                | 2.9%    | n/a    | n/a    | n/a    | n/a     | 1.1%                                     | 1.4%    | n/a    | n/a    | n/a    | n/a     |

# LISTED INVESTMENT COMPANIES INDICATIVE NTA.

## BELL POTTER

The effective impact on the share price if the premium or discount were to normalise to the historical averages. The Bell Potter's Indicative NTA is not without error, and to be used as a guide only. As such we have included the average error (average monthly NTA less indicative NTA), average absolute error (average monthly NTA less indicative NTA on an absolute basis), and the range of minimum and maximum errors.

| ASX Code               | Company/Trust Name               | Investment Mandate | Share/Unit Price Impact if Premium/Discount normalises* |        |        |        | Share/Unit Price Impact if Premium/Discount normalises is annualised+ |        |        |        | Average Error | Average Absolute Error | Error Range |      |
|------------------------|----------------------------------|--------------------|---|--------|--------|--------|---|--------|--------|--------|---------------|------------------------|-------------|------|
|                        |                                  |                    | 6 Month   | 1 Year | 3 Year | 5 Year | 6 Month   | 1 Year | 3 Year | 5 Year |               |                        | Min         | Max  |
| <b>Domestic Equity</b> |                                  |                    |   |        |        |        |   |        |        |        |               |                        |             |      |
| AFI                    | Australian Foundation Investment | Large              | -2.9%   | -1.5%  | 7.7%   | 10.8%  | -5.7%   | -1.5%  | 2.5%   | 2.1%   | -0.2%         | 0.5%                   | -4.4%       | 1.6% |
| ARG                    | Argo Investments                 | Large              | -3.8%   | -2.5%  | 4.6%   | 6.9%   | -7.5%   | -2.5%  | 1.5%   | 1.3%   | -0.1%         | 0.5%                   | -2.4%       | 2.7% |
| AUI                    | Australian United Investment     | Large              | 1.0%  | 1.0%   | 4.5%   | 6.4%   | 1.9%  | 1.0%   | 1.5%   | 1.2%   | -0.2%         | 0.5%                   | -2.9%       | 2.0% |
| BKI                    | BKI Investment                   | Large/Medium       | -2.8%   | -2.0%  | 2.5%   | 2.3%   | -5.5%   | -2.0%  | 0.8%   | 0.5%   | 0.0%          | 0.6%                   | -4.3%       | 3.0% |
| DUI                    | Diversified United Investment    | Large/Medium       | 0.1%  | 0.7%   | 4.7%   | 7.3%   | 0.2%  | 0.7%   | 1.5%   | 1.4%   | -0.1%         | 0.5%                   | -3.3%       | 3.2% |
| CIN                    | Carlton Investments              | Large/Medium       | 3.6%  | 4.0%   | 5.6%   | 7.3%   | 7.3%  | 4.0%   | 1.8%   | 1.4%   | -0.4%         | 1.0%                   | -9.3%       | 7.2% |
| WLE                    | WAM Leaders                      | Large/Medium       | -2.4%   | -1.0%  | 4.7%   | 5.1%   | -4.8%   | -1.0%  | 1.6%   | 1.0%   | n/a           | n/a                    | n/a         | n/a  |
| WHF                    | Whitefield Industrials           | Large/Medium       | 1.8%  | 2.8%   | 9.6%   | 11.7%  | 3.6%  | 2.8%   | 3.1%   | 2.2%   | -0.2%         | 0.8%                   | -7.1%       | 3.1% |
| PIC                    | Perpetual Equity Investment      | Large/Medium       | -5.3%   | -5.8%  | -4.8%  | -5.0%  | -10.3%  | -5.8%  | -1.6%  | -1.0%  | n/a           | n/a                    | n/a         | n/a  |
| AMH                    | AMCIL                            | Large/Medium       | -2.6%   | -2.8%  | 2.8%   | 3.6%   | -5.2%   | -2.8%  | 0.9%   | 0.7%   | 0.1%          | 0.9%                   | -4.0%       | 3.4% |
| CAM                    | Clime Capital                    | Large/Medium       | 1.7%  | 0.5%   | -0.1%  | -0.3%  | 3.4%  | 0.5%   | 0.0%   | -0.1%  | n/a           | n/a                    | n/a         | n/a  |
| FSI                    | Flagship Investments             | Large/Medium       | -4.1%   | -4.9%  | 0.5%   | 3.7%   | -7.9%   | -4.9%  | 0.2%   | 0.7%   | n/a           | n/a                    | n/a         | n/a  |
| WAM                    | WAM Capital                      | Medium/Small       | -1.8%   | -1.7%  | 7.7%   | 11.9%  | -3.6%   | -1.7%  | 2.5%   | 2.3%   | n/a           | n/a                    | n/a         | n/a  |
| OPH                    | Ophir High Conviction Fund       | Medium/Small       | -1.0%   | -1.3%  | 3.3%   | 7.6%   | -2.0%   | -1.3%  | 1.1%   | 1.5%   | n/a           | n/a                    | n/a         | n/a  |
| MIR                    | Mirrabooka Investments           | Medium/Small       | -0.6%   | 0.5%   | 2.6%   | 2.9%   | -1.2%   | 0.5%   | 0.9%   | 0.6%   | 0.0%          | 0.8%                   | -2.3%       | 4.8% |
| WAX                    | WAM Research                     | Medium/Small       | -3.2%   | -1.5%  | 12.1%  | 19.4%  | -6.2%   | -1.5%  | 3.9%   | 3.6%   | n/a           | n/a                    | n/a         | n/a  |
| CDM                    | Cadence Capital                  | Medium/Small       | 20.8%   | 19.8%  | 23.2%  | 21.9%  | 45.9%   | 19.8%  | 7.2%   | 4.0%   | n/a           | n/a                    | n/a         | n/a  |
| TOP                    | Thorney Opportunities            | Medium/Small       | 2.8%  | 2.6%   | 3.3%   | 6.6%   | 5.7%  | 2.6%   | 1.1%   | 1.3%   | 0.2%          | 0.8%                   | -2.8%       | 5.6% |
| RYD                    | Ryder Capital                    | Medium/Small       | 0.3%  | 1.0%   | 3.8%   | 4.7%   | 0.5%  | 1.0%   | 1.2%   | 0.9%   | n/a           | n/a                    | n/a         | n/a  |
| TEK                    | Thorney Technologies             | Medium/Small       | 7.7%  | 9.7%   | 17.4%  | 25.1%  | 16.1%   | 9.7%   | 5.5%   | 4.6%   | n/a           | n/a                    | n/a         | n/a  |
| WAA                    | WAM Active                       | Medium/Small       | -1.3%   | -1.0%  | -0.3%  | 3.4%   | -2.6%   | -1.0%  | -0.1%  | 0.7%   | n/a           | n/a                    | n/a         | n/a  |
| ECP                    | ECP Emerging Growth              | Medium/Small       | 3.9%  | 0.8%   | 2.7%   | 4.4%   | 8.0%  | 0.8%   | 0.9%   | 0.9%   | n/a           | n/a                    | n/a         | n/a  |
| NAC                    | Naos Ex-50 Opportunities         | Medium/Small       | 16.9%   | 15.9%  | 10.5%  | 6.1%   | 36.7%   | 15.9%  | 3.4%   | 1.2%   | n/a           | n/a                    | n/a         | n/a  |
| WMI                    | WAM Microcap                     | Small/Micro        | -1.8%   | -1.1%  | 6.8%   | 7.3%   | -3.6%   | -1.1%  | 2.2%   | 1.4%   | n/a           | n/a                    | n/a         | n/a  |
| SEC                    | Spheria Emerging Companies       | Small/Micro        | -0.9%   | -0.6%  | -4.8%  | -6.8%  | -1.9%   | -0.6%  | -1.6%  | -1.4%  | n/a           | n/a                    | n/a         | n/a  |
| NSC                    | Naos Small Cap Opportunities     | Small/Micro        | 24.1%   | 26.8%  | 28.1%  | 27.3%  | 53.9%   | 26.8%  | 8.6%   | 5.0%   | n/a           | n/a                    | n/a         | n/a  |
| NCC                    | Naos Emerging Opportunities      | Small/Micro        | 6.3%  | 14.9%  | 15.5%  | 17.1%  | 13.0%   | 14.9%  | 4.9%   | 3.2%   | n/a           | n/a                    | n/a         | n/a  |
| ACQ                    | Acom Capital Investment          | Small/Micro        | 4.5%  | 6.5%   | 16.6%  | 18.2%  | 9.3%  | 6.5%   | 5.2%   | 3.4%   | n/a           | n/a                    | n/a         | n/a  |
| DJW                    | Djerriwarr Investments           | Income             | -1.0%   | -3.2%  | -2.0%  | -0.5%  | -2.1%   | -3.2%  | -0.7%  | -0.1%  | 0.1%          | 0.6%                   | -2.5%       | 3.5% |
| PL8                    | Plato Income Maximiser           | Income             | -5.7%   | -5.1%  | -1.8%  | -3.3%  | -11.0%  | -5.1%  | -0.6%  | -0.7%  | n/a           | n/a                    | n/a         | n/a  |
| WHI                    | Whitefield Income                | Income             | n/a   | n/a    | n/a    | n/a    | n/a   | n/a    | n/a    | n/a    | n/a           | n/a                    | n/a         | n/a  |
| SNC                    | Sandon Capital Investments       | Activist           | 0.7%  | 1.3%   | 2.4%   | 1.5%   | 1.3%  | 1.3%   | 0.8%   | 0.3%   | n/a           | n/a                    | n/a         | n/a  |
| WAR                    | WAM Strategic Value              | Disc Capture       | 0.5%  | -0.8%  | -0.5%  | n/a    | 0.9%  | -0.8%  | -0.2%  | n/a    | n/a           | n/a                    | n/a         | n/a  |
| FGX                    | Future Generation Investment     | Fund of Funds      | 4.4%  | 2.6%   | 3.4%   | 4.1%   | 8.9%  | 2.6%   | 1.1%   | 0.8%   | n/a           | n/a                    | n/a         | n/a  |

\*Refers to the current share price divided by the Indicative Pre-Tax NTA as compared to the average 6m, 1y, 3y and 5y Discount/Premium share price to pre-tax NTA as at end of the previous month, over the relevant time period of 1, 3, 5 and 10 years. +Refers to the current share price divided by the Indicative Pre-Tax NTA as compared to the average 6m, 1y, 3y and 5y Discount/Premium share price to pre-tax NTA as at end of the previous month, over the relevant time period of 1, 3, 5 and 10 years.

# LISTED INVESTMENT COMPANIES INDICATIVE NTA.

## BELL POTTER

The effective impact on the share price if the premium or discount were to normalise to the historical averages. The Bell Potter's Indicative NTA is not without error, and to be used as a guide only. As such we have included the average error (average monthly NTA less indicative NTA), average absolute error (average monthly NTA less indicative NTA on an absolute basis), and the range of minimum and maximum errors.

| ASX Code                    | Company/Trust Name                  | Investment Mandate       | Share/Unit Price Impact if Premium/Discount normalises* |        |        |        | Share/Unit Price Impact if Premium/Discount normalises is annualised+ |        |        |        | Average Error | Average Absolute Error | Error Range |      |
|-----------------------------|-------------------------------------|--------------------------|---|--------|--------|--------|---|--------|--------|--------|---------------|------------------------|-------------|------|
|                             |                                     |                          | 6 Month   | 1 Year | 3 Year | 5 Year | 6 Month   | 1 Year | 3 Year | 5 Year |               |                        | Min         | Max  |
| <b>International Equity</b> |                                     |                          |   |        |        |        |   |        |        |        |               |                        |             |      |
| MFF                         | MFF Capital Investments             | Global                   | 0.5%  | -0.8%  | -3.3%  | -1.1%  | 1.1%  | -0.8%  | -1.1%  | -0.2%  | n/a           | n/a                    | n/a         | n/a  |
| WGB                         | WAM Global                          | Global                   | -3.7%   | -1.8%  | -3.8%  | -1.9%  | -7.2%   | -1.8%  | -1.3%  | -0.4%  | n/a           | n/a                    | n/a         | n/a  |
| PMC                         | Platinum Capital                    | Global                   | -0.4%   | -1.7%  | -5.2%  | -3.8%  | -0.8%   | -1.7%  | -1.8%  | -0.8%  | n/a           | n/a                    | n/a         | n/a  |
| PGF                         | PM Capital Global Opportunities     | Global                   | 4.0%  | 2.2%   | -0.1%  | -6.1%  | 8.1%  | 2.2%   | 0.0%   | -1.3%  | n/a           | n/a                    | n/a         | n/a  |
| PIA                         | Pengana International Equities      | Global                   | 0.5%  | 0.2%   | 0.6%   | 2.4%   | 1.0%  | 0.2%   | 0.2%   | 0.5%   | n/a           | n/a                    | n/a         | n/a  |
| WQG                         | WCM Global Growth                   | Global                   | 4.4%  | 3.7%   | -0.8%  | 1.7%   | 9.0%  | 3.7%   | -0.3%  | 0.3%   | n/a           | n/a                    | n/a         | n/a  |
| ALI                         | Argo Global Listed Infrastructure   | Global (Infrastructure)  | 4.9%  | 3.0%   | 8.3%   | 8.9%   | 10.0%   | 3.0%   | 2.7%   | 1.7%   | n/a           | n/a                    | n/a         | n/a  |
| LRT                         | Lowell Resources Fund               | Global (Jnr Resources)   | 7.9%  | 10.6%  | 10.3%  | 9.6%   | 16.4%   | 10.6%  | 3.3%   | 1.9%   | 0.0%          | 2.2%                   | -5.2%       | 7.3% |
| GVF                         | Global Value Fund                   | Global (Disc Capture)    | -2.3%   | -4.3%  | -3.9%  | -3.6%  | -4.5%   | -4.3%  | -1.3%  | -0.7%  | n/a           | n/a                    | n/a         | n/a  |
| FGG                         | Future Generation Global Investment | Global (Fund of Funds)   | -0.1%   | -1.3%  | -0.9%  | -0.3%  | -0.2%   | -1.3%  | -0.3%  | -0.1%  | n/a           | n/a                    | n/a         | n/a  |
| HM1                         | Hearts and Minds Investments        | Global (High Conviction) | 1.1%  | -0.2%  | -0.2%  | 6.8%   | 2.2%  | -0.2%  | -0.1%  | 1.3%   | n/a           | n/a                    | n/a         | n/a  |
| PAI                         | Platinum Asia Investments           | Asia                     | -3.1%   | -5.6%  | -9.1%  | -6.7%  | -6.1%   | -5.6%  | -3.1%  | -1.4%  | n/a           | n/a                    | n/a         | n/a  |
| RG8                         | Regal Asian Investments             | Asia                     | 0.7%  | -0.9%  | -2.0%  | -3.4%  | 1.5%  | -0.9%  | -0.7%  | -0.7%  | n/a           | n/a                    | n/a         | n/a  |
| <b>Alternatives</b>         |                                     |                          |   |        |        |        |   |        |        |        |               |                        |             |      |
| LSF                         | L1 Long Short Fund                  | Long/Short (Global)      | 8.9%  | 7.2%   | 4.3%   | 0.5%   | 18.5%   | 7.2%   | 1.4%   | 0.1%   | n/a           | n/a                    | n/a         | n/a  |
| VG1                         | VGI Partners Global Investments     | Long/Short (Global)      | 4.1%  | 1.6%   | -2.1%  | -1.7%  | 8.3%  | 1.6%   | -0.7%  | -0.3%  | n/a           | n/a                    | n/a         | n/a  |
| RF1                         | Regal Investment Fund               | Long/Short (Global)      | 3.8%  | 1.9%   | 2.5%   | 4.1%   | 7.8%  | 1.9%   | 0.8%   | 0.8%   | n/a           | n/a                    | n/a         | n/a  |
| TGF                         | Tribeca Global Natural Resources    | Long/Short (Resources)   | 6.9%  | 6.0%   | 9.8%   | 9.1%   | 14.2%   | 6.0%   | 3.2%   | 1.8%   | n/a           | n/a                    | n/a         | n/a  |
| WMA                         | WAM Alternative Assets              | Private Assets           | 3.7%  | 2.0%   | 4.6%   | n/a    | 7.5%  | 2.0%   | 1.5%   | n/a    | n/a           | n/a                    | n/a         | n/a  |
| D2O                         | Duxton Water                        | Water Entitlements       | 8.0%  | 9.2%   | 9.6%   | 6.9%   | 16.7%   | 9.2%   | 3.1%   | 1.3%   | n/a           | n/a                    | n/a         | n/a  |
| PE1                         | Pengana Private Equity Trust        | Private Equity (Global)  | 5.4%  | 9.5%   | 16.5%  | 20.8%  | 11.0%   | 9.5%   | 5.2%   | 3.9%   | n/a           | n/a                    | n/a         | n/a  |
| BTI                         | Bailador Technology Investments     | Private Equity (Tech)    | 1.4%  | 2.1%   | 4.6%   | 8.4%   | 2.7%  | 2.1%   | 1.5%   | 1.6%   | n/a           | n/a                    | n/a         | n/a  |
| <b>Fixed Interest</b>       |                                     |                          |   |        |        |        |   |        |        |        |               |                        |             |      |
| GCI                         | Gryphon Capital Income Trust        | ABS & RMBS               | 0.8%  | 0.6%   | -0.8%  | -2.0%  | 1.6%  | 0.6%   | -0.3%  | -0.4%  | n/a           | n/a                    | n/a         | n/a  |
| DN1                         | Dominion Income Trust 1             | ABS & RMBS               | n/a   | n/a    | n/a    | n/a    | n/a   | n/a    | n/a    | n/a    | n/a           | n/a                    | n/a         | n/a  |
| QRI                         | Qualitas Real Estate Income Fund    | CRE                      | 1.7%  | 0.9%   | -3.9%  | -3.9%  | 3.5%  | 0.9%   | -1.3%  | -0.8%  | n/a           | n/a                    | n/a         | n/a  |
| MRE                         | Metrics Real Estate Fund            | Blended CRE              | n/a   | n/a    | n/a    | n/a    | n/a   | n/a    | n/a    | n/a    | n/a           | n/a                    | n/a         | n/a  |
| MXT                         | Metrics Master Income Trust         | Diversified Loans        | 0.1%  | -0.2%  | -2.7%  | -3.2%  | 0.1%  | -0.2%  | -0.9%  | -0.7%  | n/a           | n/a                    | n/a         | n/a  |
| MOT                         | Metrics Income Opportunities Trust  | Private Credit           | 4.0%  | 5.4%   | 2.6%   | 1.4%   | 8.1%  | 5.4%   | 0.9%   | 0.3%   | n/a           | n/a                    | n/a         | n/a  |
| MA1                         | MA Credit Income Trust              | Private Credit           | n/a   | n/a    | n/a    | n/a    | n/a   | n/a    | n/a    | n/a    | n/a           | n/a                    | n/a         | n/a  |
| PCI                         | Perpetual Credit Income Trust       | Domestic & Global Credit | -0.3%   | -2.4%  | -9.3%  | -9.8%  | -0.6%   | -2.4%  | -3.2%  | -2.0%  | n/a           | n/a                    | n/a         | n/a  |
| KKC                         | KKR Credit Income Fund              | Global Credit            | -1.3%   | -2.2%  | -8.0%  | -8.2%  | -2.6%   | -2.2%  | -2.7%  | -1.7%  | n/a           | n/a                    | n/a         | n/a  |
| PCX                         | Pengana Global Private Credit Trust | Global Private Credit    | 1.0%  | n/a    | n/a    | n/a    | 1.9%  | n/a    | n/a    | n/a    | n/a           | n/a                    | n/a         | n/a  |

\*Refers to the current share price divided by the Indicative Pre-Tax NTA as compared to the average 6m, 1y, 3y and 5y Discount/Premium share price to pre-tax NTA as at end of the previous month, over the relevant time period of 1, 3, 5 and 10 years. +Refers to the current share price divided by the Indicative Pre-Tax NTA as compared to the average 6m, 1y, 3y and 5y Discount/Premium share price to pre-tax NTA as at end of the previous month, over the relevant time period of 1, 3, 5 and 10 years.



# LISTED INVESTMENT COMPANIES INDICATIVE NTA.

## BELL POTTER

A number of LICs under our coverage currently have options outstanding. Options dilute the NTA when exercised and therefore have an impact on the Premium or Discount on a look through basis.

| ASX Code               | Company/Trust Name               | Investment Mandate | Option Code | Shares/Units On Issue (M) | Options '000 | Strike  | Share/Unit Price | Option Price | Expiry    | Asset Backing after % |        | Effective Prem/Disc after % |        |
|------------------------|----------------------------------|--------------------|-------------|---------------------------|--------------|---------|------------------|--------------|-----------|-----------------------|--------|-----------------------------|--------|
|                        |                                  |                    |             |                           |              |         |                  |              |           | Exercised 100%        | 50%    | % Exc. 100%                 | 50%    |
| <b>Domestic Equity</b> |                                  |                    |             |                           |              |         |                  |              |           |                       |        |                             |        |
| AFI                    | Australian Foundation Investment | Large              | n/a         | 1,258                     | n/a          | n/a     | \$7.24           | n/a          | n/a       | n/a                   | n/a    | n/a                         | n/a    |
| ARG                    | Argo Investments                 | Large              | n/a         | 763                       | n/a          | n/a     | \$8.83           | n/a          | n/a       | n/a                   | n/a    | n/a                         | n/a    |
| AUI                    | Australian United Investment     | Large              | n/a         | 124                       | n/a          | n/a     | \$10.18          | n/a          | n/a       | n/a                   | n/a    | n/a                         | n/a    |
| BKI                    | BKI Investment                   | Large/Medium       | n/a         | 807                       | n/a          | n/a     | \$1.68           | n/a          | n/a       | n/a                   | n/a    | n/a                         | n/a    |
| DUI                    | Diversified United Investment    | Large/Medium       | n/a         | 215                       | n/a          | n/a     | \$5.12           | n/a          | n/a       | n/a                   | n/a    | n/a                         | n/a    |
| CIN                    | Carlton Investments              | Large/Medium       | n/a         | 26                        | n/a          | n/a     | \$30.28          | n/a          | n/a       | n/a                   | n/a    | n/a                         | n/a    |
| WLE                    | WAM Leaders                      | Large/Medium       | n/a         | 1,370                     | n/a          | n/a     | \$1.28           | n/a          | n/a       | n/a                   | n/a    | n/a                         | n/a    |
| WHF                    | Whitefield Industrials           | Large/Medium       | n/a         | 120                       | n/a          | n/a     | \$5.28           | n/a          | n/a       | n/a                   | n/a    | n/a                         | n/a    |
| PIC                    | Perpetual Equity Investment      | Large/Medium       | n/a         | 382                       | n/a          | n/a     | \$1.24           | n/a          | n/a       | n/a                   | n/a    | n/a                         | n/a    |
| AMH                    | AMCIL                            | Large/Medium       | n/a         | 318                       | n/a          | n/a     | \$1.10           | n/a          | n/a       | n/a                   | n/a    | n/a                         | n/a    |
| CAM                    | Clime Capital                    | Large/Medium       | n/a         | 151                       | n/a          | n/a     | \$0.76           | n/a          | n/a       | n/a                   | n/a    | n/a                         | n/a    |
| FSI                    | Flagship Investments             | Large/Medium       | n/a         | 26                        | n/a          | n/a     | \$2.05           | n/a          | n/a       | n/a                   | n/a    | n/a                         | n/a    |
| WAM                    | WAM Capital                      | Medium/Small       | n/a         | 1,120                     | n/a          | n/a     | \$1.63           | n/a          | n/a       | n/a                   | n/a    | n/a                         | n/a    |
| OPH                    | Ophir High Conviction Fund       | Medium/Small       | n/a         | 223                       | n/a          | n/a     | \$2.92           | n/a          | n/a       | n/a                   | n/a    | n/a                         | n/a    |
| MIR                    | Mirrabooka Investments           | Medium/Small       | n/a         | 195                       | n/a          | n/a     | \$3.25           | n/a          | n/a       | n/a                   | n/a    | n/a                         | n/a    |
| WAX                    | WAM Research                     | Medium/Small       | n/a         | 206                       | n/a          | n/a     | \$1.23           | n/a          | n/a       | n/a                   | n/a    | n/a                         | n/a    |
| CDM                    | Cadence Capital                  | Medium/Small       | n/a         | 299                       | n/a          | n/a     | \$0.66           | n/a          | n/a       | n/a                   | n/a    | n/a                         | n/a    |
| TOP                    | Thorney Opportunities            | Medium/Small       | n/a         | 179                       | n/a          | n/a     | \$0.61           | n/a          | n/a       | n/a                   | n/a    | n/a                         | n/a    |
| RYD                    | Ryder Capital                    | Medium/Small       | n/a         | 81                        | n/a          | n/a     | \$1.21           | n/a          | n/a       | n/a                   | n/a    | n/a                         | n/a    |
| TEK                    | Thorney Technologies             | Medium/Small       | n/a         | 378                       | n/a          | n/a     | \$0.12           | n/a          | n/a       | n/a                   | n/a    | n/a                         | n/a    |
| WAA                    | WAM Active                       | Medium/Small       | n/a         | 76                        | n/a          | n/a     | \$0.87           | n/a          | n/a       | n/a                   | n/a    | n/a                         | n/a    |
| ECP                    | ECP Emerging Growth              | Medium/Small       | n/a         | 18                        | n/a          | n/a     | \$1.31           | n/a          | n/a       | n/a                   | n/a    | n/a                         | n/a    |
| NAC                    | Naos Ex-50 Opportunities         | Medium/Small       | NACO        | 48                        | 10,706       | \$0.900 | \$0.37           | \$0.001      | 31-Dec-26 | \$0.46                | \$0.46 | -19.6%                      | -19.6% |
| WMI                    | WAM Microcap                     | Small/Micro        | n/a         | 278                       | n/a          | n/a     | \$1.53           | n/a          | n/a       | n/a                   | n/a    | n/a                         | n/a    |
| SEC                    | Spheria Emerging Companies       | Small/Micro        | n/a         | 60                        | n/a          | n/a     | \$2.36           | n/a          | n/a       | n/a                   | n/a    | n/a                         | n/a    |
| NSC                    | Naos Small Cap Opportunities     | Small/Micro        | n/a         | 135                       | n/a          | n/a     | \$0.30           | n/a          | n/a       | n/a                   | n/a    | n/a                         | n/a    |
| NCC                    | Naos Emerging Opportunities      | Small/Micro        | NCCO        | 74                        | 14,235       | \$0.670 | \$0.37           | \$0.002      | 31-Dec-26 | \$0.51                | \$0.51 | -28.4%                      | -28.4% |
| ACQ                    | Acorn Capital Investment         | Small/Micro        | n/a         | 89                        | n/a          | n/a     | \$0.77           | n/a          | n/a       | n/a                   | n/a    | n/a                         | n/a    |
| DJW                    | Djerriwarr Investments           | Income             | n/a         | 264                       | n/a          | n/a     | \$3.05           | n/a          | n/a       | n/a                   | n/a    | n/a                         | n/a    |
| PL8                    | Plato Income Maximiser           | Income             | n/a         | 749                       | n/a          | n/a     | \$1.29           | n/a          | n/a       | n/a                   | n/a    | n/a                         | n/a    |
| WHI                    | Whitefield Income                | Income             | n/a         | 160                       | n/a          | n/a     | \$1.29           | n/a          | n/a       | n/a                   | n/a    | n/a                         | n/a    |
| SNC                    | Sandon Capital Investments       | Activist           | n/a         | 145                       | n/a          | n/a     | \$0.76           | n/a          | n/a       | n/a                   | n/a    | n/a                         | n/a    |
| WAR                    | WAM Strategic Value              | Disc Capture       | n/a         | 180                       | n/a          | n/a     | \$1.13           | n/a          | n/a       | n/a                   | n/a    | n/a                         | n/a    |
| FGX                    | Future Generation Investment     | Fund of Funds      | n/a         | 409                       | n/a          | n/a     | \$1.25           | n/a          | n/a       | n/a                   | n/a    | n/a                         | n/a    |

Options outstanding and shares on issue are as at the date of the report.

# LISTED INVESTMENT COMPANIES INDICATIVE NTA.

## BELL POTTER

A number of LICs under our coverage currently have options outstanding. Options dilute the NTA when exercised and therefore have an impact on the Premium or Discount on a look through basis.

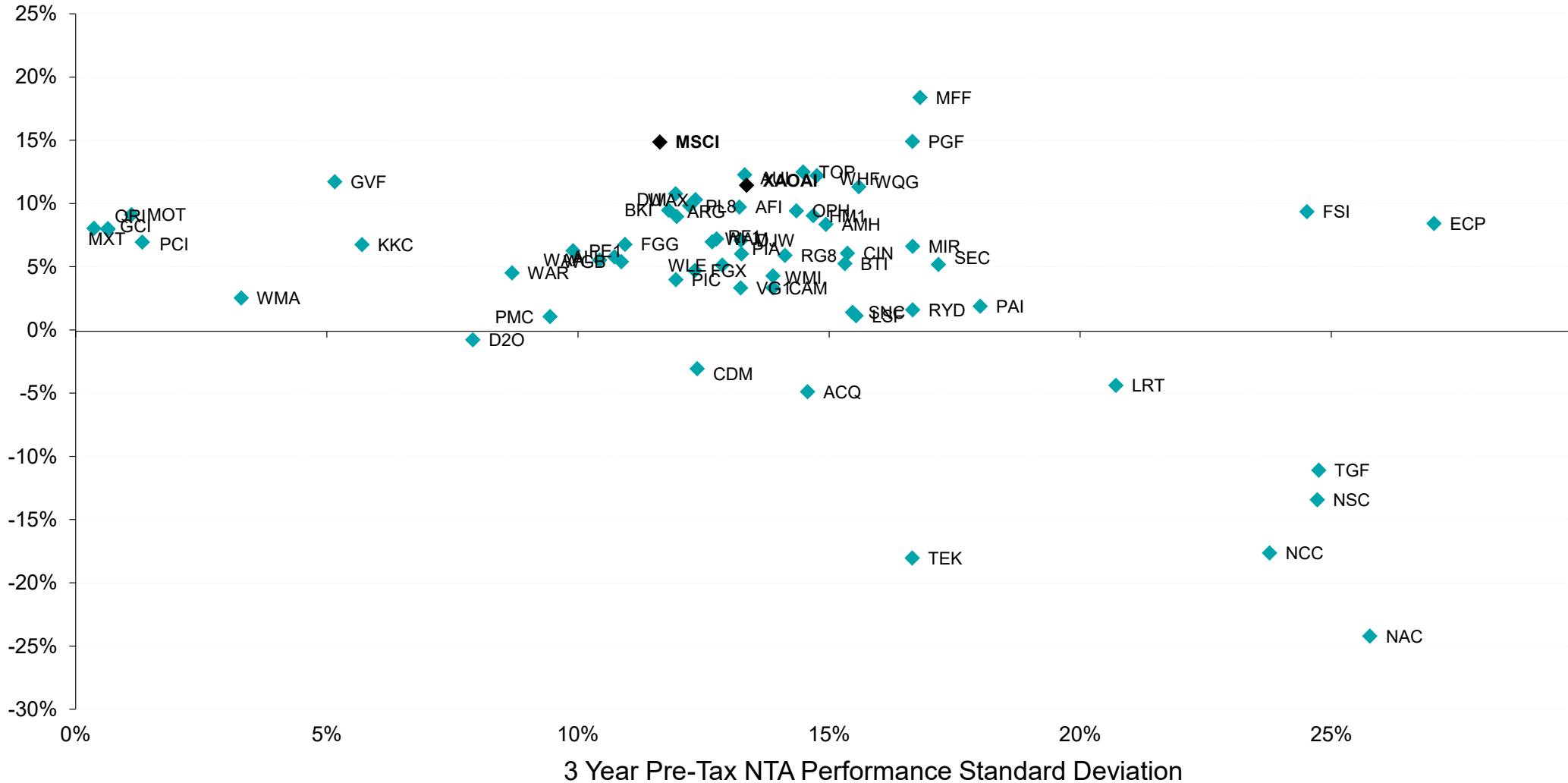
| ASX Code                    | Company/Trust Name                  | Investment Mandate       | Option Code | Shares/Units On Issue (M) | Options '000 | Strike  | Share/Unit Price | Option Price | Expiry    | Asset Backing after % Exercised |        | Effective Prem/Disc after % Exc. |        |
|-----------------------------|-------------------------------------|--------------------------|-------------|---------------------------|--------------|---------|------------------|--------------|-----------|---------------------------------|--------|----------------------------------|--------|
|                             |                                     |                          |             |                           |              |         |                  |              |           | 100%                            | 50%    | 100%                             | 50%    |
| <b>International Equity</b> |                                     |                          |             |                           |              |         |                  |              |           |                                 |        |                                  |        |
| MFF                         | MFF Capital Investments             | Global                   | n/a         | 583                       | n/a          | n/a     | \$4.37           | n/a          | n/a       | n/a                             | n/a    | n/a                              | n/a    |
| WGB                         | WAM Global                          | Global                   | n/a         | 356                       | n/a          | n/a     | \$2.41           | n/a          | n/a       | n/a                             | n/a    | n/a                              | n/a    |
| PMC                         | Platinum Capital                    | Global                   | n/a         | 296                       | n/a          | n/a     | \$1.44           | n/a          | n/a       | n/a                             | n/a    | n/a                              | n/a    |
| PGF                         | PM Capital Global Opportunities     | Global                   | n/a         | 479                       | n/a          | n/a     | \$2.41           | n/a          | n/a       | n/a                             | n/a    | n/a                              | n/a    |
| PIA                         | Pengana International Equities      | Global                   | n/a         | 257                       | n/a          | n/a     | \$1.20           | n/a          | n/a       | n/a                             | n/a    | n/a                              | n/a    |
| WQG                         | WCM Global Growth                   | Global                   | n/a         | 226                       | n/a          | n/a     | \$1.66           | n/a          | n/a       | n/a                             | n/a    | n/a                              | n/a    |
| ALI                         | Argo Global Listed Infrastructure   | Global (Infrastructure)  | n/a         | 178                       | n/a          | n/a     | \$2.29           | n/a          | n/a       | n/a                             | n/a    | n/a                              | n/a    |
| LRT                         | Lowell Resources Fund               | Global (Jnr Resources)   | n/a         | 41                        | n/a          | n/a     | \$1.03           | n/a          | n/a       | n/a                             | n/a    | n/a                              | n/a    |
| GVF                         | Global Value Fund                   | Global (Disc Capture)    | n/a         | 175                       | n/a          | n/a     | \$1.36           | n/a          | n/a       | n/a                             | n/a    | n/a                              | n/a    |
| FGG                         | Future Generation Global Investment | Global (Fund of Funds)   | n/a         | 399                       | n/a          | n/a     | \$1.46           | n/a          | n/a       | n/a                             | n/a    | n/a                              | n/a    |
| HM1                         | Hearts and Minds Investments        | Global (High Conviction) | n/a         | 229                       | n/a          | n/a     | \$3.04           | n/a          | n/a       | n/a                             | n/a    | n/a                              | n/a    |
| PAI                         | Platinum Asia Investments           | Asia                     | n/a         | 370                       | n/a          | n/a     | \$1.08           | n/a          | n/a       | n/a                             | n/a    | n/a                              | n/a    |
| RG8                         | Regal Asian Investments             | Asia                     | n/a         | 152                       | n/a          | n/a     | \$2.02           | n/a          | n/a       | n/a                             | n/a    | n/a                              | n/a    |
| <b>Alternatives</b>         |                                     |                          |             |                           |              |         |                  |              |           |                                 |        |                                  |        |
| LSF                         | L1 Long Short Fund                  | Long/Short (Global)      | n/a         | 625                       | n/a          | n/a     | \$2.67           | n/a          | n/a       | n/a                             | n/a    | n/a                              | n/a    |
| VG1                         | VGI Partners Global Investments     | Long/Short (Global)      | n/a         | 253                       | n/a          | n/a     | \$1.75           | n/a          | n/a       | n/a                             | n/a    | n/a                              | n/a    |
| RF1                         | Regal Investment Fund               | Long/Short (Global)      | n/a         | 217                       | n/a          | n/a     | \$3.08           | n/a          | n/a       | n/a                             | n/a    | n/a                              | n/a    |
| TGF                         | Tribeca Global Natural Resources    | Long/Short (Resources)   | n/a         | 79                        | n/a          | n/a     | \$1.46           | n/a          | n/a       | n/a                             | n/a    | n/a                              | n/a    |
| WMA                         | WAM Alternative Assets              | Private Assets           | n/a         | 196                       | n/a          | n/a     | \$0.98           | n/a          | n/a       | n/a                             | n/a    | n/a                              | n/a    |
| D2O                         | Duxton Water                        | Water Entitlements       | D2OOA       | 156                       | 38,165       | \$1,920 | \$1.34           | \$0.004      | 10-May-26 | \$1.66                          | \$1.66 | -19.3%                           | -19.3% |
| PE1                         | Pengana Private Equity Trust        | Private Equity (Global)  | n/a         | 277                       | n/a          | n/a     | \$1.23           | n/a          | n/a       | n/a                             | n/a    | n/a                              | n/a    |
| BTI                         | Bailador Technology Investments     | Private Equity (Tech)    | n/a         | 148                       | n/a          | n/a     | \$1.15           | n/a          | n/a       | n/a                             | n/a    | n/a                              | n/a    |
| <b>Fixed Interest</b>       |                                     |                          |             |                           |              |         |                  |              |           |                                 |        |                                  |        |
| GCI                         | Gryphon Capital Income Trust        | ABS & RMBS               | n/a         | 419                       | n/a          | n/a     | \$2.03           | n/a          | n/a       | n/a                             | n/a    | n/a                              | n/a    |
| DN1                         | Dominion Income Trust 1             | ABS & RMBS               | n/a         | 3                         | n/a          | n/a     | \$102.50         | n/a          | n/a       | n/a                             | n/a    | n/a                              | n/a    |
| QRI                         | Qualitas Real Estate Income Fund    | CRE                      | n/a         | 509                       | n/a          | n/a     | \$1.62           | n/a          | n/a       | n/a                             | n/a    | n/a                              | n/a    |
| MRE                         | Metrics Real Estate Fund            | Blended CRE              | n/a         | 151                       | n/a          | n/a     | \$1.90           | n/a          | n/a       | n/a                             | n/a    | n/a                              | n/a    |
| MXT                         | Metrics Master Income Trust         | Diversified Loans        | n/a         | 1,063                     | n/a          | n/a     | \$2.07           | n/a          | n/a       | n/a                             | n/a    | n/a                              | n/a    |
| MOT                         | Metrics Income Opportunities Trust  | Private Credit           | n/a         | 332                       | n/a          | n/a     | \$2.06           | n/a          | n/a       | n/a                             | n/a    | n/a                              | n/a    |
| MA1                         | MA Credit Income Trust              | Private Credit           | n/a         | 166                       | n/a          | n/a     | \$2.00           | n/a          | n/a       | n/a                             | n/a    | n/a                              | n/a    |
| PCI                         | Perpetual Credit Income Trust       | Domestic & Global Credit | n/a         | 486                       | n/a          | n/a     | \$1.16           | n/a          | n/a       | n/a                             | n/a    | n/a                              | n/a    |
| KKC                         | KKR Credit Income Fund              | Global Credit            | n/a         | 323                       | n/a          | n/a     | \$2.35           | n/a          | n/a       | n/a                             | n/a    | n/a                              | n/a    |
| PCX                         | Pengana Global Private Credit Trust | Global Private Credit    | n/a         | 84                        | n/a          | n/a     | \$2.00           | n/a          | n/a       | n/a                             | n/a    | n/a                              | n/a    |

Options outstanding and shares on issue are as at the date of the report.

# LISTED INVESTMENT COMPANIES CHARTS.

## BELL POTTER

Chart 1: 3 Year Pre-Tax Performance v Standard Deviation



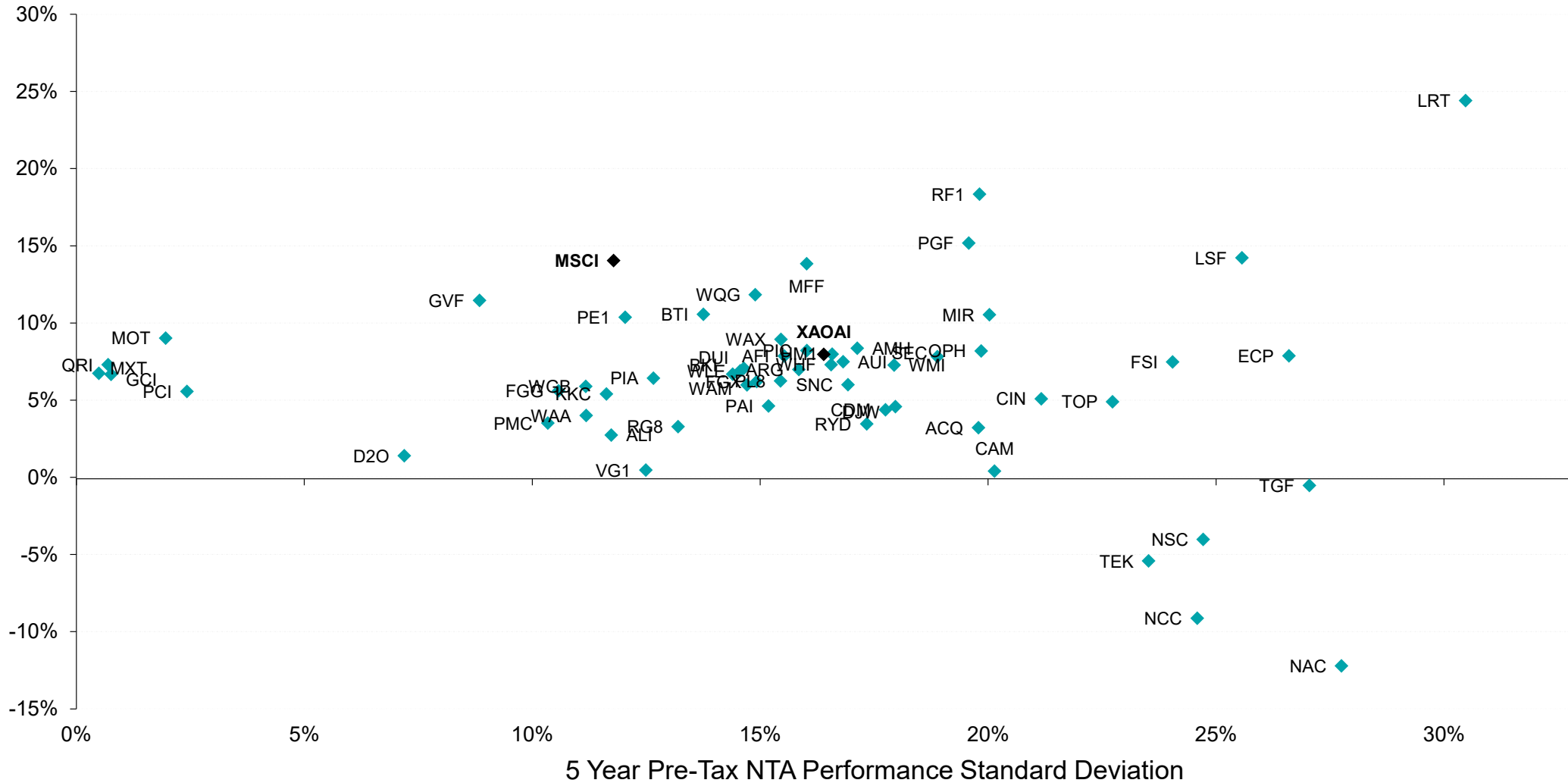
Source: IRESS, Bell Potter Estimates

Measurement of LIC performance is calculated after all operating expenses, provision and payment of both income and realised capital gains tax and assumes the reinvestment of dividends, but does not incorporate franking. XAOAI: S&P/ASX 200 Accumulation Index, MSCI: MSCI World Total Return Index (in AUD).

# LISTED INVESTMENT COMPANIES CHARTS.

## BELL POTTER

Chart 2: 5 Year Pre-Tax Performance v Standard Deviation



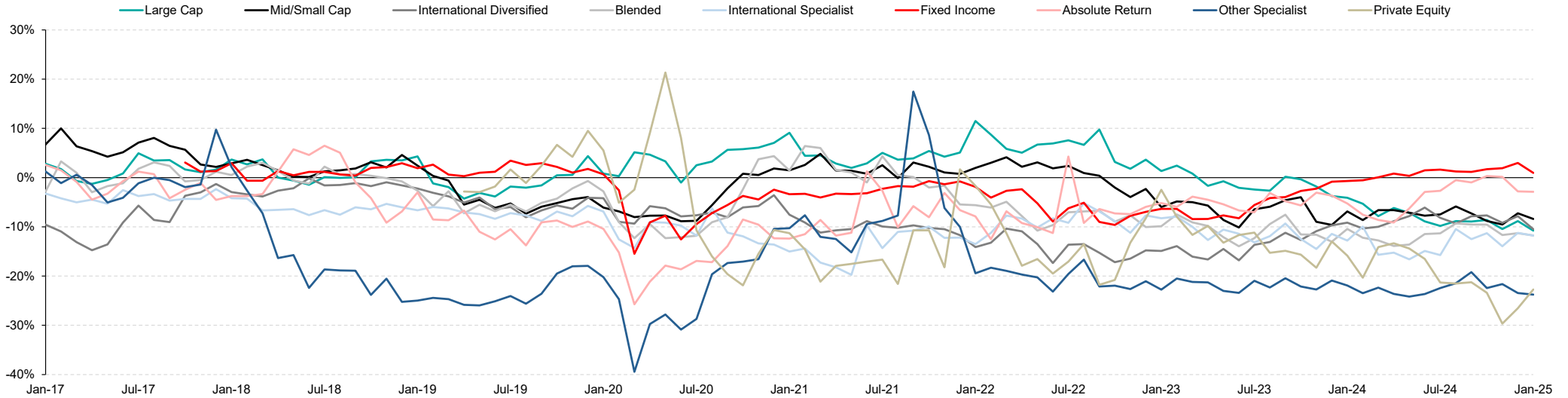
Source: IRESS, Bell Potter Estimates

Measurement of LIC performance is calculated after all operating expenses, provision and payment of both income and realised capital gains tax and assumes the reinvestment of dividends, but does not incorporate franking. XAOAI: S&P/ASX 200 Accumulation Index, MSCI: MSCI World Total Return Index (in AUD).

# LISTED INVESTMENT COMPANIES CHARTS.

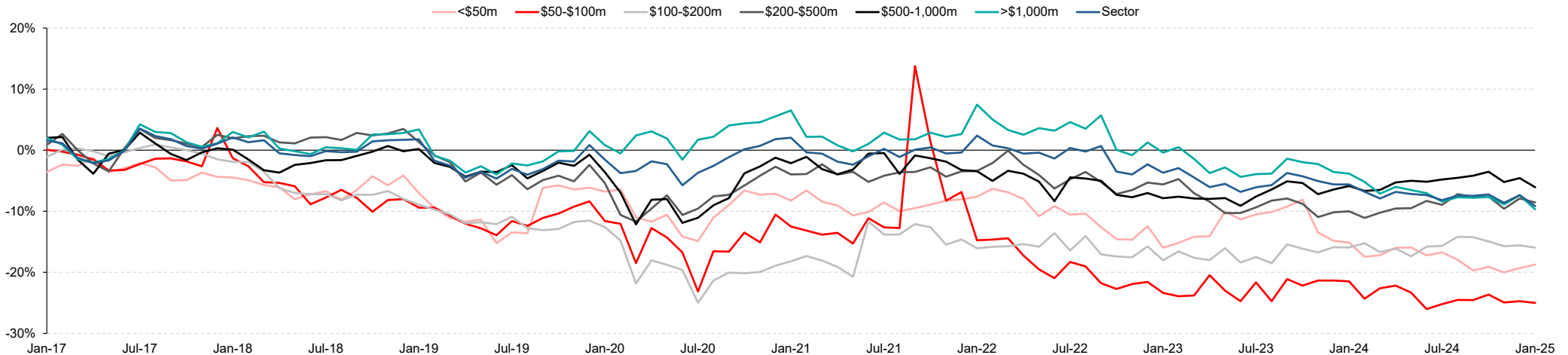
## BELL POTTER

Chart 3: Premium/Discount by Investment Mandate (Mkt Cap Weighted)



Source: IRESS, Company Data, Bell Potter Estimates

Chart 4: Premium/Discount by Market Capitalisation Band (Mkt Cap Weighted)

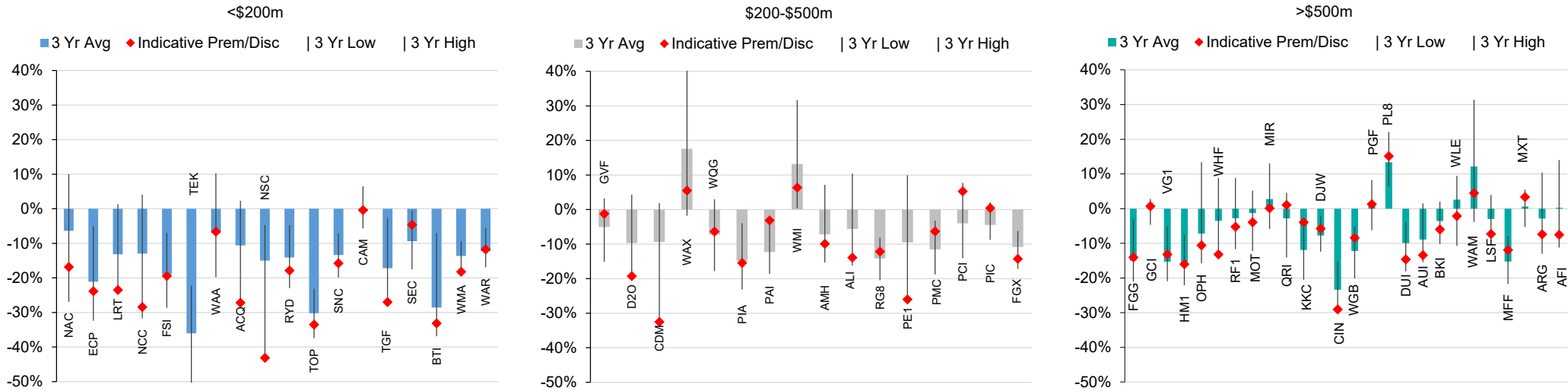


Source: IRESS, Company Data, Bell Potter Estimates

# LISTED INVESTMENT COMPANIES CHARTS.

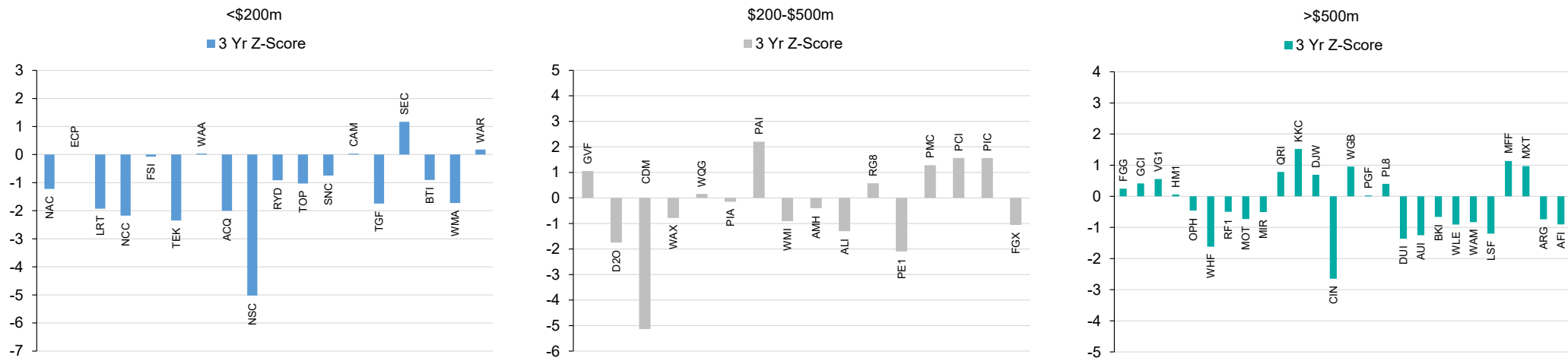
## BELL POTTER

Chart 5: Premium/Discount Relationship Across Market Capitalisation Band



Source: IRESS, Company Data, Bell Potter Estimates

Chart 6: Standardised Premium/Discount by Variance Around Mean (Across Market Capitalisation Band)

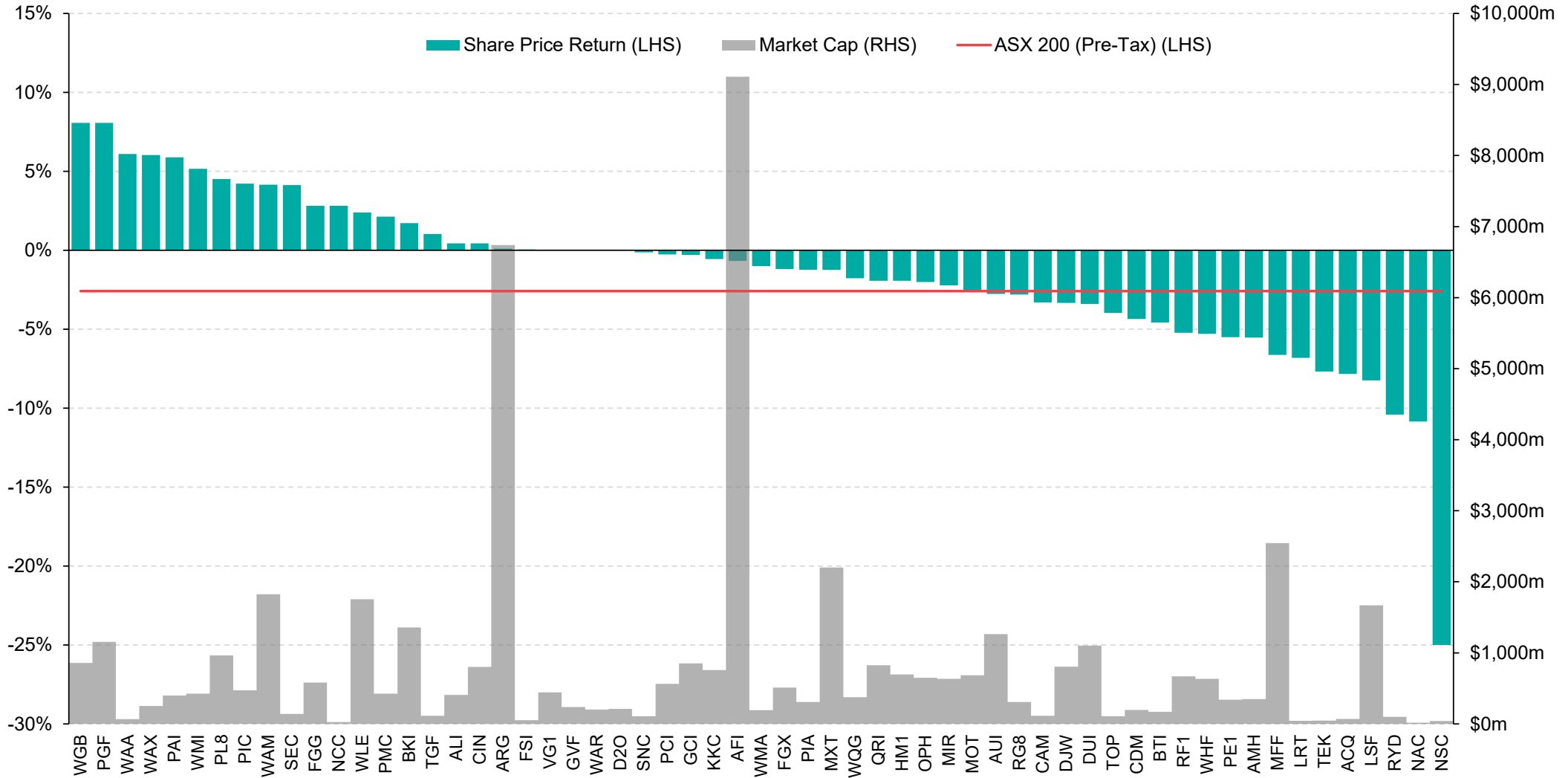


Source: IRESS, Company Data, Bell Potter Estimates

# LISTED INVESTMENT COMPANIES CHARTS.

## BELL POTTER

Chart 7: Share Price Performance since 31 December 2024 (including Net Dividends)



Source: IRESS

# Listed Investment Companies

**Bell Potter Securities Limited**

ACN25 006 390 7721  
Level 29, 101 Collins Street  
Melbourne, Victoria, 3000  
**Telephone** +61 3 9256 8700  
**www.bellpotter.com.au**

**Bell Potter Securities (HK) Limited**

Room 1601, 16/F  
Prosperity Tower, 39 Queens Road  
Central, Hong Kong, 0000  
**Telephone +852 3750 8400**

**Bell Potter Securities (US) LLC**

Floor 39  
444 Madison Avenue, New York  
NY 10022, U.S.A  
**Telephone +1 917 819 1410**

**Bell Potter Securities (UK) Limited**

16 Berkeley Street  
London, England  
W1J 8DZ, United Kingdom  
**Telephone +44 7734 2929**

**The following may affect your legal rights. Important Disclaimer:**

This document is a private communication to clients and is not intended for public circulation or for the use of any third party, without the prior approval of Bell Potter Securities Limited. In the USA and the UK this research is only for institutional investors. It is not for release, publication or distribution in whole or in part to any persons in the two specified countries. **In Hong Kong**, this research is being distributed by Bell Potter Securities (HK) Limited which is licensed and regulated by the Securities and Futures Commission, Hong Kong. **In the United States**, this research is issued and distributed by Bell Potter Securities (US) LLC which is a registered broker-dealer and member of FINRA. Any person receiving this report from Bell Potter Securities (US) LLC and wishing to transact in any security described herein should do so with Bell Potter Securities (US) LLC.

This is general investment advice only and does not constitute personal advice to any person. Because this document has been prepared without consideration of any specific client's financial situation, particular needs and investment objectives ('relevant personal circumstances'), a Bell Potter Securities Limited investment adviser (or the financial services licensee, or the representative of such licensee, who has provided you with this report by arrangement with Bell Potter Securities Limited) should be made aware of your relevant personal circumstances and consulted before any investment decision is made on the basis of this document.

While this document is based on information from sources which are considered reliable, Bell Potter Securities Limited has not verified independently the information contained in the document and Bell Potter Securities Limited and its directors, employees and consultants do not represent, warrant or guarantee, expressly or impliedly, that the information contained in this document is complete or accurate. Nor does Bell Potter Securities Limited accept any responsibility for updating any advice, views opinions, or recommendations contained in this document or for correcting any error or omission which may become apparent after the document has been issued.

Except insofar as liability under any statute cannot be excluded, Bell Potter Securities Limited and its directors, employees and consultants do not accept any liability (whether arising in contract, in tort or negligence or otherwise) for any error or omission in this document or for any resulting loss or damage (whether direct, indirect, consequential or otherwise) suffered by the recipient of this document or any other person.

**Research Policies:**

For Bell Potter's Research Coverage Decision Making Process and Research Independence Policy, please refer to our company website:

<https://www.bellpotter.com.au/topnavigation/private-clients/stockbroking/research>

**Disclosure of interest:**

Bell Potter Securities Limited, its employees, consultants and its associates within the meaning of Chapter 7 of the Corporations Law may receive commissions, underwriting and management fees from transactions involving securities referred to in this document (which its representatives may directly share) and may from time to time hold interests in the securities referred to in this document.

**Additional disclosure:**

Bell Potter Securities Limited acted as a Co-Manager or Lead Manager to the following capital raisings and/or IPOs: FGG, FGX, GCI, HM1, LSF, MOT, MXT, NBI, PCI, PE1, QRI, RF1, TOP, TEK, TGF, WAR, WGB, WQG. Bell Potter Securities Limited received fees for these services.

**ANALYST CERTIFICATION**

Each research analyst primarily responsible for the content of this research report, in whole or in part, certifies that with respect to each security or issuer that the analyst covered in this report: (1) all of the views expressed accurately reflect his or her personal views about those securities or issuers and were prepared in an independent manner and (2) no part of his or her compensation was, is, or will be, directly or indirectly, related to the specific recommendations or views expressed by that research analyst in the research report.